



EXTERIOR INSTALLATION INSTRUCTIONS

(Please Read Prior to Beginning Installation)

Components

Wall Trim:

The "E" shaped trim that attaches to the walls, joists, and pitch rails around the entire periphery.

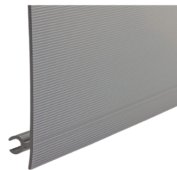
12' length, 2" height



Panel:

The visible surface of your under deck finishing system. The Panels lock into the Main Rail and can be removed, allowing for easy maintenance access.

1' width, 12' and 16' lengths



Pitch Rail:

Used to impart a slope of 1/2" per 3' in order to properly drain your under deck system in the direction of your gutter. Available in 1/2" and 1", and can be stacked to provide proper pitch.

12' length
*Treated Lumber can also be used.



Main Rail:

The mounting pieces that will run the length of your deck attached to the pitch rails.

12' and 16' lengths, 2" height



Seam Rail:

Installs at the center to allow you to pitch to both sides of the deck in applications greater than 16' in length.

12' length, 2" height



Before Beginning

For a complete installation video and more information visit www.zipupceilings.com

Recommended Tools: Snips, utility knife, hack saw, tape measure, chalk line, carpenter pencil, right angle, speed square, mini prybar, and power drill/screw driver. Main Rails and Wall Trim can be cut with a miter saw with a vinyl appropriate blade. A universal, or oscillating tool can also be used.

Warning: Cut edges and corners may be sharp. Wear safety glasses and use care when handling.

Additional Materials: 1 1/4" roofing screws, 3" exterior grade deck screws, and PVC compatible, exterior grade silicone caulk.

Prepare Your Deck: Ensure that your deck is properly flashed at the base of the house. Beams should also be prepped with flashing to ensure proper water diversion away from support fasteners and joists, allowing water to drain into the system. Repair any broken, uneven, or rotted joists, as well as remove any debris from under the deck. Make sure house siding or other cladding is in good condition.

Cold Weather Warning: Installing the system in temperatures below 50° F is not recommended. Making cuts and securing attachments into the products in cold weather may cause cracks and/or chipping.

Plan Your Underdeck Ceiling

A typical deck will have the joists running perpendicular to the house. The ZipUP system is attached to Pitch Rails to impart a slope of 1/2" fall over a maximum of 3' (see Pitching Your Deck). A traditional installation will mount these Pitching Rails parallel to, but driving water away from the house. However, you can change water direction by using your Pitch Rails to cross joists at an angle.

Applications with a length greater than 16' will require a Seam Rail. In these applications, the Seam Rail will be placed at the center of the deck, with the Pitch Rails increasing on both sides of the deck (see Figure 1). Gutters will be needed on each side of the deck, and the Panels will run parallel to the house.

Figure 2



For standard installation, Pitch Rail placement every 3' in 1/2" increments is recommended, although slopes up to 1/2" in 2' are permissible in areas where water volume is a concern.

Example: 1/2" Pitch Rail at 3', a 1" Pitch Rail at 6', a 1 1/2" Pitch Rail at 9' and so on.

In the layout, take into account the amount of pitch needed, as well as any obstructions or beams.

Note: Plan for the length of the Panels to end in the center of the gutter. This will ensure room for water to run off and allow space to attach the end Wall Trim. The Main Rails need to be approx. 1" longer than the Panels to allow for attaching to the last Pitch Rail. The end Wall Trim needs to easily fit inside the gutter trough (see Figure 2 and Finishing the System).

Estimating Materials

Begin by calculating the amount of Wall Trim needed, add the 2 lengths and 2 sides of the deck to get its perimeter in feet and divide by 12.

Example: 12'x16' deck has 56 lineal perimeter feet /12 = 4.6 (or a total of 5 Wall Trim pieces). The number of Panels needed will be derived from the width of your deck. Each Panel is 1' wide so divide the width of the deck in feet by 1 to get the number of Panels needed always rounding up to the next full Panel. It is recommended to add an additional piece(s) to allow for cuts around posts, odd angles, or corners. Plan the deck in a way that will avoid any Panels on either side of the deck smaller than 4" wide. The number of Main Rails needed is equal to the number of Panels minus 1.

Example: If the projects needs 12 Panels, 11 Main Rails will be needed.

***Pitch Rails can also be made from treated lumber and ripped to the appropriate width with a table saw or circular saw. Pitch Rails should be pre-drilled before installing. The last Pitch Rail needs to be placed at the end of the Main Rail at the open end of the system.**

Pitch Your Deck

Standard Installation:

Install the first 1/2" Pitch Rail at 3' out from the house, and increase the pitch 1/2" every 3' down the length of the deck (see Figure 1 & 3). It is important to ensure that the Pitch Rail is straight and level. Secure all Pitch Rails to the joists with 3" deck screws. It is best to attach at every joist. Should joists prove too uneven or unlevelled, skip a single joist or shim as needed.

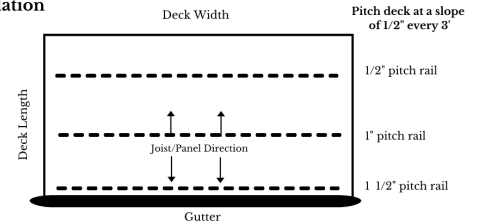
With a Seam:

The Seam Rail must be installed in the center of the deck, by attaching it to the joists with the 1 1/4" roofing screws. In applications longer than 12', two or more Seam Rails will need to be lined up and the ends secured close together to ensure proper alignment of the sections. Once the Seam Rail is in place, you will create the same 1/2" gradient every 3' so that the Panels will slope away from the seam on both sides of the deck (see Figure 1 & 3). Panels and Main Rails will secure into the Seam Rail first, and then be fastened at every Pitch Rail. The lower channel of the Seam Rail will need to be sealed with the PVC compatible silicone as the Panels are inserted to create a proper watertight seal.

Note: Never try to pass water through a Seam Rail.

Figure 1

Standard Installation



Installation with a Seam Rail divide deck into two equal sections

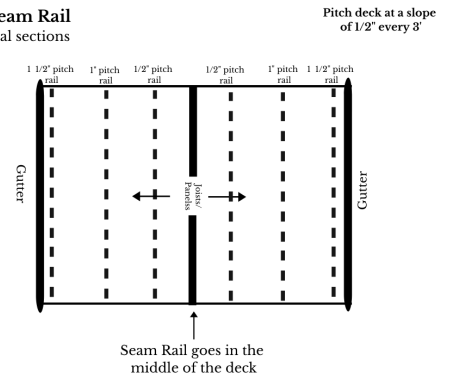
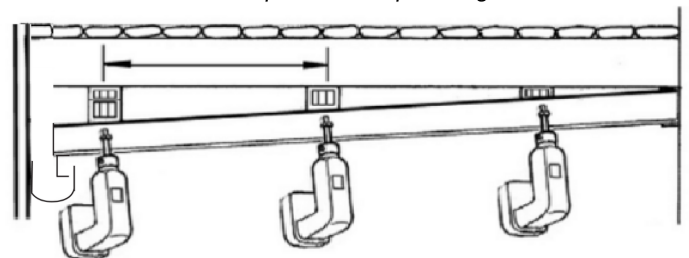


Figure 3

Pitch Rails should be spaced at a span no greater than 3'



Installing the Wall Trim

Install the Wall Trim along the house edge using 1 1/4" roofing screws (see Figure 5) at no more than 2' apart. Check to see that the deck is flashed in such a way that the water from along the wall will be directed over the Wall Trim and onto the Panel.

It may be necessary to add flashing or place a bead of silicone to seal where the top of the Wall Trim sits against the structure to keep water from flowing behind the Wall Trim.

Corners can be mitered or simply overlapped (see Figure 4). Using 1 1/4" roofing screws, secure the Wall Trim by aligning it along the wall and across the deck joist, making sure the Wall Trim is straight and level.

Figure 4

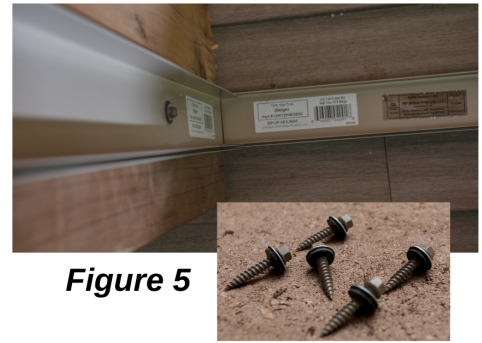


Figure 5

Next, secure the Wall Trim to the sides of the deck using 1 1/4" roofing screws at no more than 2' apart. Make sure the back of the Wall Trim is flush with the ends of the Pitch Rails. Seal around the top edge of the Wall Trim where it joins the structure with silicone to make sure water does not flow between the structure and the back of the Wall Trim. In sections where the Wall Trim is unsupported, you may wish to add a piece of lumber that can be covered by adding fascia to add support and keep the Wall Trim from moving out away from the Panel. The open end of the system, where the gutter will be attached, will be finished by turning the Wall Trim down (see Finishing the System).



Figure 6



Prepping Your Panel

The first 3/4" of the bead must be trimmed back from both sides of the end of the Panel that will be inserted into the Wall Trim (see Figure 6). This material can be removed easily with a pair of snips, utility knife or oscillating tool. Carefully removing the bead will ensure a proper fit into the Wall Trim.

CAUTION: Do not remove more than 3/4" of the bead. Cutting the bead too far back could allow water to run through that section. The first and last Panels will need to be cut to the desired width. Before installation, it may be desirable to wipe the Panel clean for best aesthetic results.

Installing the First Panel and Main Rail

Secure a Main Rail to the first Panel that was cut to width, or has the bead removed (see Figure 7). Insert the end of the Panel into the Wall Trim's lower channel (see Figure 7) along with the width of the deck (or at the Seam Rail). Insert the Main Rail as far into the Wall Trim as possible. Fit the length of the cut or trimmed edge down the length of the side Wall Trim. Make sure the Wall Trim remains square and does not push out towards the side of the deck.

Figure 7



Figure 8



Once the Panel is in position and not bowing or pulling out of the Wall Trim, attach the Main Rail to the Pitch Rails using 1 1/4" roofing screws (see Figure 8). Make sure the Main Rail rests flat against and is perpendicular to the Pitch Rails. Deformation in the surface of the Panels may occur if the Main Rail is not square to the Pitch Rail when attached. Secure the Main Rail at every Pitch Rail. To ensure a proper watertight seal, put a bead of silicone caulk into the Wall Trim as the panels are inserted, and along any other cut edge.

CAUTION: Do not over-torque the screws fastening the Main Rails to the Pitch Rails.

Installing the Remaining Panels and Main Rails

Insert the nipped end of the second Panel into the Wall Trim, and zip it into the channel of the already secured first Main Rail. Place the second Main Rail into the Wall Trim and zip the Panel into the Main Rail and attach it to the Pitch Rails, same as the previous Main Rail. Continue with this process by installing the Panels and Main Rails. At the final Panel, slide its end into the Wall Trim first and then slide its edge along with the Wall Trim at the sides. Finally, zip the Panel into the channel of the Main Rail.

Finishing the System

To finish the open end of the system, a piece of Wall Trim needs to be placed at the ends of the panels between the Main Rails. (See Figure 2) Add silicone caulk to the inside of the Wall Trim channel, and place the caulked piece of Wall Trim upside down onto the end of the panel. You can also use 1/4" stainless steel screw to secure. This straightens the ends of the panels to prevent gapping at the gutter and water backflow.

The system is compatible with most conventional gutter systems (gutter not included). We recommend a system in which the strap attaches underneath (see Figure 9) to minimize the gap between the gutter and the end of the system for appearance.

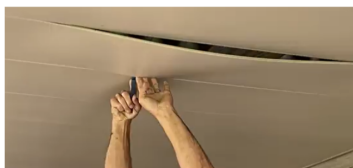
Figure 9



Panel Removal

If it becomes necessary to remove a Panel, push up firmly in the center of the Panel you wish to remove (it is preferred to remove the Panel from the center of its length). Using a tool with a wide, strong, straight edge (many prefer a mini-pry bar), insert the tool into the exposed part of the Panel edge next to the bead and gently pull it down until the seal is broken and a gap is exposed. Do this on the other side of the Panel across from the first gap. Once the seal is broken on both sides, pull down and the Panel will un-zip along its length.

Note: After the removal of a Panel, you will need to re-seal along the Wall Trim (or Seam Rail if applicable) upon reinstalling the Panel.



Cleaning & Seasonal Maintenance

If natural debris such as leaves/pine needles, etc. build up on the panels, carefully remove every other panel or blocked panels as needed. (See Above Panel Removal instructions). Manually remove any large debris by hand then use a hose to run water starting at the highest point to wash remaining debris down the panel and out the gutter system to regain flow. Rinse panels that have been removed and reinstall. If cleaning is necessary, use a non-abrasive cleaner or mild soap and water. Remember to keep spacing between installed deck boards free and clear of debris to allow for proper airflow. Refer to your decking brand maintenance guide for proper care instructions.

Note: A power washer can be used, but not highly recommended. Use the lowest setting to prevent scratching or damage to ZipUP panels.

Air Flow & Joists Water Damage Risk

A common misconception about the ZipUP Underdeck system is that it does not allow for airflow, causing water damage and rot to the deck joists. ZipUP Underdeck is engineered to hang from a 2 1/4" main rail allowing for ample space and airflow between the deck joist and the panel to dry as needed. When installed and maintained correctly, joists are not affected by standing water. Keep spacing between above deck boards free and clear of debris to allow for proper airflow. See Cleaning & Seasonal Maintenance instructions above for more details.

Painting

The system can be painted with latex paint. Be sure to use a latex compatible primer before painting.

Note: Painting over Panel joint lines may cause difficulty in removing Panels and also cause the paint to chip or flake when removing. It is best to score joint lines before removing painted panels.

Storage

To store materials while waiting for installation, it is important to lay the components on a flat surface. For best results, please allow materials to warm up to at least 50° F to minimize cracks and/or chips during installation.

Lifetime Limited Warranty

MP Global Products, LLC ("Manufacturer") warrants that its Zip-UP Ceiling System ("Product") is free from defects in manufacturing, materials and workmanship. Manufacturer further warrants that the Product will snap together as designed. This limited warranty is extended to the original purchaser of the Product (the "Owner") and is subject to the exclusion and limitations provided below. This warranty is not transferable.

IN THE EVENT OF A DEFECT, MALFUNCTION OR OTHER FAILURE OF THE PRODUCT (NOT OTHERWISE EXCLUDED BELOW), THE MANUFACTURER WILL REMEDY THE DEFECT OR FAILURE WITHOUT CHARGE TO THE CONSUMER PROVIDED NOTICE OF THE WARRANTY CLAIM IN THE MANNER PROVIDED BELOW IS RECEIVED BY MANUFACTURER WITHIN THE LIMITED WARRANTY PERIOD. THE REMEDY FOR ANY SUCH DEFECT, FAILURE OR MALFUNCTION IS LIMITED, AT MANUFACTURERS OPTION, TO THE REPAIR, REPLACEMENT, OR REFUND OF THE PURCHASE PRICE OF THE PRODUCT. THE REPAIR OR REPLACEMENT OPTIONS ARE LIMITED TO THE REPLACEMENT COST OF THE PROJECT. THIS LIMITED WARRANTY IS FURTHER SUBJECT TO THE CONDITIONS, LIMITATIONS, AND EXCLUSIONS PROVIDED HERE. THIS WARRANTY GIVES YOU SPECIFIC LEGAL RIGHTS, AND YOU MAY ALSO HAVE OTHER RIGHTS THAT VARY FROM STATE TO STATE IN THE UNITED STATES OF AMERICA.

5 Year Limited Fade Warranty. MP Global Products, LLC ("Manufacturer") warrants that its Zip-UP Ceiling System ("Product") will not fade for a period of 5 years from the date the Product was originally purchased.

CONDITIONS/EXCLUSIONS TO THE LIMITED WARRANTY

THIS LIFETIME WARRANTY IS FURTHER MADE SUBJECT TO THE FOLLOWING CONDITIONS AND EXCLUSIONS, PLEASE READ THE FOLLOWING CAREFULLY:

- 1. Required Installation.** To be covered by this Limited Warranty, the Product must be installed following the Manufacturer's recommended installation instructions.
- 2. Damage Coverage.** This warranty only covers damage caused to the Products.
- 3. Limitation on Cause of Defects Covered Under Warranty.** This limited warranty covers only defects in manufacturing materials or workmanship and does not cover defects, malfunctions or failures resulting from any other causes including, without limitation: (i) improper or inadequate installation; (ii) defects caused by fire, tornado, hurricane, acts of God, extraordinary environmental conditions, riot or other civil insurrections, or acts of war or conflict; (iii) defects caused by abusive conditions or accidents, such as but not limited to cutting or severe impact; (iv) installation or use of the product in any manner not recommended by the manufacturer including, but without limitation the use of improper or un-recommended cleaning solutions or cleaning practices.
- 4. Controlling Document.** This warranty is the sole and exclusive description of warranties applicable to the Products. Any written or oral representation, warranties, or guarantees concerning the Products which are inconsistent with or beyond the scope of the description contained herein are superseded by this document and deemed inapplicable or void.
- 5. Required Procedures to Submit a Warranty Claim.** In order to obtain performance of any warranty obligation, the Owner must do the following: Contact the manufacturer at the toll-free number listed below or by mail at the address listed below, and request a claim form. Complete and return the claim form to the Manufacturer within the Limited Warranty Period. The phone number and address to contact the Manufacturer for these purposes is as follows:

MP Global Products, LLC Attention: Zip-UP Warranty Claim
Department 2500 Old Hadar Road PO Box 2283 | Norfolk, Nebraska
USA 68702-2283 Phone: (888) 379-9695 | Fax: (402) 379.9737

THIS LIMITED WARRANTY IS GIVEN IN LIEU OF IMPLIED WARRANTIES. IMPLIED WARRANTIES OF MERCHANTABILITY AND FITNESS FOR A PARTICULAR PURPOSE ARE DISCLAIMED. THIS WARRANTY GIVES YOU SPECIFIC LEGAL RIGHTS. YOU MAY ALSO HAVE OTHER RIGHTS THAT VARY FROM STATE TO STATE. TO THE EXTENT ALLOWED BY APPLICABLE LAWS, THE MANUFACTURER HEREBY DISCLAIMS ANY AND ALL SUCH RIGHTS. UNDER NO CIRCUMSTANCES SHALL MANUFACTURERS BE LIABLE TO THE OWNER, OR ANY OTHER PERSON FOR ANY CONSEQUENTIAL, INCIDENTAL, ECONOMIC, DIRECT, INDIRECT, GENERAL, OR SPECIAL DAMAGES ARISING OUT OF ANY BREACH OF WARRANTY, EXPRESS OR IMPLIED, UNDER THIS CONTRACT. SOME STATES DO NOT ALLOW THE EXCLUSION OR LIMITATION OF INCIDENTAL OR CONSEQUENTIAL DAMAGES, SO THE ABOVE LIMITATION OR EXCLUSION MAY NOT APPLY TO YOU. THIS LIMITED WARRANTY HEREBY SUPERSEDES ALL PRE-EXISTING WARRANTIES, EITHER EXPRESS OR IMPLIED, RELATING TO THE PRODUCTS.