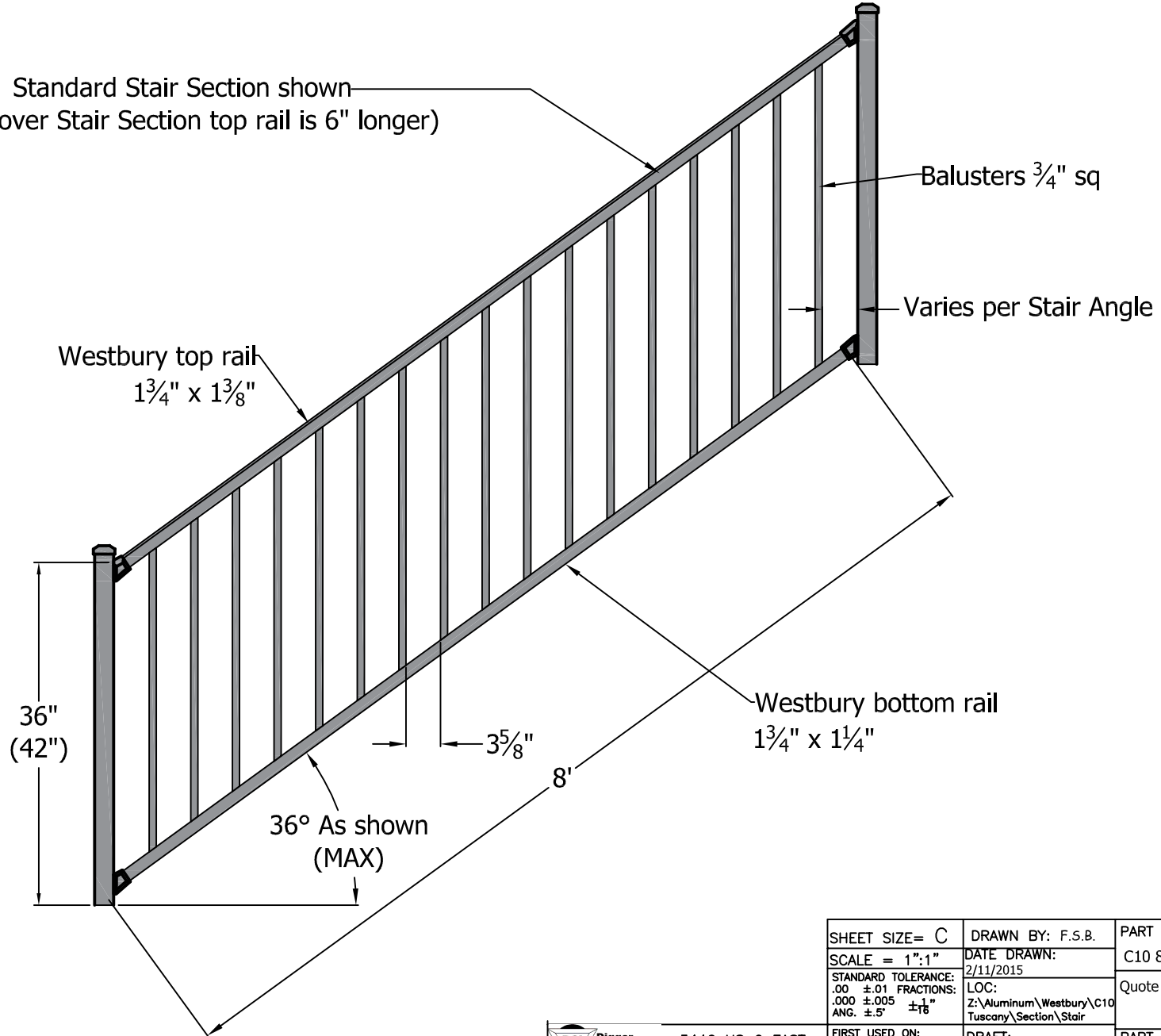


REV.	LOC.	REVISION	DATE
A		RELEASE PENDING APPROVAL	
B		Baluster spacing 3.625. Increased hole size to accomodate 36' stairs.	2/12/15

Standard Stair Section shown  
(Crossover Stair Section top rail is 6" longer)



SHEET SIZE= C	DRAWN BY: F.S.B.	PART NUMBER or STYLE:	
SCALE = 1":1"	DATE DRAWN:	C10 8ft Stair Section	
STANDARD TOLERANCE:	2/11/2015	Quote requested by:	
.00 ±.01 FRACTIONS:	LOC:		
.000 ±.005 ±1"	Z:\Aluminum\Westbury\C10		
ANG. ±.5° ±18"	Tuscany\Section\Stair		
FIRST USED ON:	DRAFT:	PART NAME:	SHEET REV.
	20141001-6F	C10 Tuscany	OF B



3446 US 6 EAST  
Bremen, IN 46506