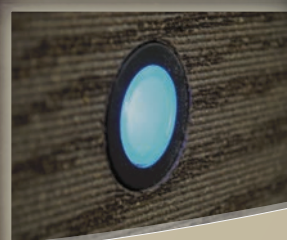
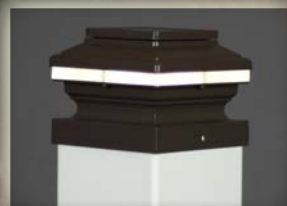


Illuminate Your Life
with *Distinction* from
Aurora!



2019
*Design
Guide*

Many
NEW
Products!

Aurora *
DECK LIGHTING

Aurora

DECK LIGHTING

LET THERE BE *Light*

When it comes to designing attractive, high quality, and energy efficient outdoor lighting for decks, fences, docks, and other outdoor environments, Aurora Deck Lighting is an industry leader!

BRIGHT IDEAS COURTESY OF *Aurora*

Deck builders, fence builders, remodelers, and homeowners look to Aurora for innovative lighting options that coordinate seamlessly with wood or composite materials. Our lights are available in a variety of designs: from classic lantern styles to high profile designs, and sleek, modern LED lights. We also offer the convenience of all-inclusive kits that make it easy to install energy efficient recessed lighting in decks or steps, as well as versatile strips of bright LEDs under deck rails, patio covers, or stairs.

With every light we offer, one factor remains the same: our lights look great, not only when the sun goes down, but all day long!

THE FINISHING *Touch*

All Aurora Deck Lighting is made of rust-free aluminum, which is powder coated for a long-lasting finish. Aurora Deck Lighting is easy to install, and is available in low voltage, line voltage, and solar options. Our lights are available in 7 designer colors, and they come in ten different sizes to fit posts from 2" to 6-1/2". Adapters are also available for mounting our post cap lights directly to deck or porch rails. With Aurora, there's a light for every application!

POPULAR CELESTIAL LIGHTING FROM *Aurora*

- ZENA GO GREEN with innovative Solar technology!
- MACIMAE Beautiful frosted radiance illuminates all night long
- NEPTUNE A sophisticated multi-layered design which adds long-term appeal
- VENUS Equipped with 12 bright LED lights, to create a radiant glow
- POLARIS Solar lighting with a striking detailed lantern styling
- TITAN Glass options add style to a layered rectangle design
- ORION Geometric framework adds interest to this lantern light
- SIRIUS Has a traditional appeal with its pyramid shaped design
- TRITON Blends beautifully with numerous landscape themes

CONTENTS

	THE ZENA NEW!	4
	THE MACIMAE NEW!	5
	THE ARIES	6
	THE POLARIS	7
	THE NEPTUNE NEW!	8
	THE VENUS NEW!	9
	THE IRIS	10
	THE SATURN	11
	THE ODYSSEY	12
	THE PHOENIX	13
	THE COSMIC VEGA, NEBULA, PYXIS, CORONA	14-15
	THE TITAN	16
	THE TRITON	17
	THE ORION	18
	THE SIRIUS	19
	THE MINIS TITAN, POLARIS	20
	THE POST CAPS SIRIUS, TITAN	21
	LIGHTING ACCESSORIES	22
	PHOTO GALLERY	23-27

THE
ZENA

**3.7V
1400 Mah
Battery**



The Zena...

Harnesses the power of the sun with this Solar Powered Post Cap Light which shines brightly up to 8 hours per night.

Go green with solar technology applied to an innovative, cool white LED lit post cap that is sure to grab attention!

The Zena Light is available in five weather resistant color finishes.

A MATCH MADE IN HEAVEN...

Pair all of our Lighted Caps with our Mini Lights and Post Caps on Pages 20-21. The wide assortment of caps and minis offers almost endless design possibilities!

A FULL ARRAY OF COLORS...

All of our Post Caps and Lights come in a variety of color options. Mix and match to create a one of a kind outdoor space, that will be the envy of all your family and friends.

SIZE IN INCHES	M. Black	Black	White	Bronze	Tan	Clay	Walnut
3-1/2"	48	48	48	48			48
4"	48	48	48	48	48	48	
4-3/8"	48	48	48	48			
4-5/8"	48	48	48	48			48
5"	48	48	48	48	48	48	
5-1/2"	48	48	48	48			
6"		48	48				
6-1/2"		48	48	48			

Legend: 48 = 48 Hour Lead Time



**3.7V
1400 Mah
Battery**

THE MACIMAE

THE *MaciMae*...

The MaciMae uses a solar panel mounted to the top of the light to charge during the day, and power a beautiful radiant cool white LED lights at night for up to 8 hours.

The frosted glass comes standard to create a soft glow to illuminate your surroundings.

SIZE IN INCHES	M. Black	Black	White	Bronze	Tan	Walnut
3-1/2"	48	48	48	48		48
4"	48	48	48	48	48	
4-3/8"	48	48	48	48		
4-5/8"	48	48	48	48		48
5"	48	48	48	48	48	
5-1/2"	48	48	48	48		
6"		48	48			
6-1/2"		48	48	48		

Legend: 48 = 48 Hour Lead Time

See pages 20-21 for matching Post Caps and our Mini Lights.

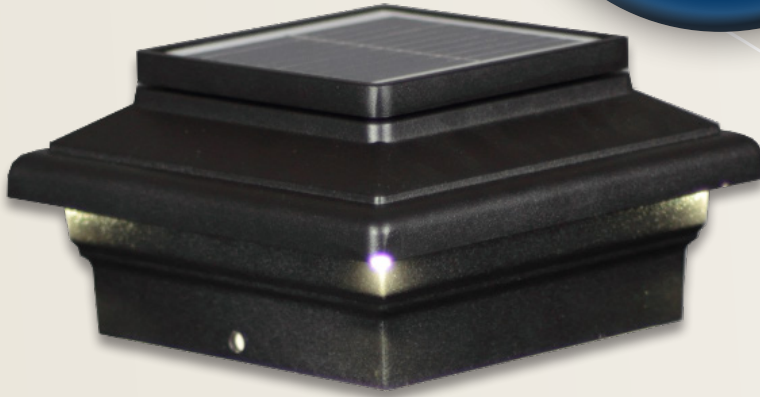


ITS WIRELESS...
Our solar caps require no wiring, and easily installs to composite or wood posts in an assortment of sizes.



THE
ARIES

**3.7V
1400 Mah
Battery**



POWERED BY THE SUN...
Our Aries Solar Light's
Solar cell absorbs the sun's rays
to turn lights on automatically at dusk
for up to 8 hours of a soft night light glow!

SOLAR 

THE SOLAR POWERED *Aries Light...*

Shines four spots of a bright cool white LED lights from fence or deck posts onto surfaces below from a sleek, low profile cap of top quality aluminum.

The Aries Solar Light is available in five popular, weather resistant color finishes.

EASY MOUNT STYLE...

Our solar cap requires no wiring and easily installs to composite or wood posts in sizes from 3^{1/2}" to 5^{1/2}". Homeowners and neighbors appreciate the functional down lighting. See pages 20-21 for matching Post Caps and our Mini Lights.

SIZE IN INCHES	M. Black	Black	White	Bronze	Tan
	3-1/2"	S	S	S	S
4"	S	S	S		S
4-3/8"	S	S	S	S	
4-5/8"	S	S	S		
5"	S	S	S		S
5-1/2"		S	S	S	

Legend: S = Standard Stock Light

Homeowners and neighbors appreciate the functional down lighting that eliminates glare and utilizes the power of the sun!



**3.7V
1400 Mah
Battery**

**THE
POLARIS**

THE Polaris Style of Light...
Radiates the night through solar power!

These solar powered cool white LED lights fit a wide range of post sizes to include wood, vinyl, composite and metal posts.

See chart for size and color.



THE Polaris Light...

All Polaris Series lights come with a 3.7 volt 1400Mah Lithium Ion battery that captures the sun's powerful energy. Polaris lights are designed to illuminate for up to 8 hours.

See pages 20-21 for matching Post Caps and our Mini Lights.

SIZE IN INCHES	M. Black	Black	White	Bronze	Tan	Clay
2"	(48)	S	S	S		
2-1/2"	(48)	S	S	S		
3-1/2"	(48)	S	S	S		
4"	S	S	S	(48)	S	S
4-3/8"	(48)	S	(48)	(48)	(48)	(48)
4-5/8"	(48)	S	S	S		
5"	(48)	S	S	(48)	S	(48)

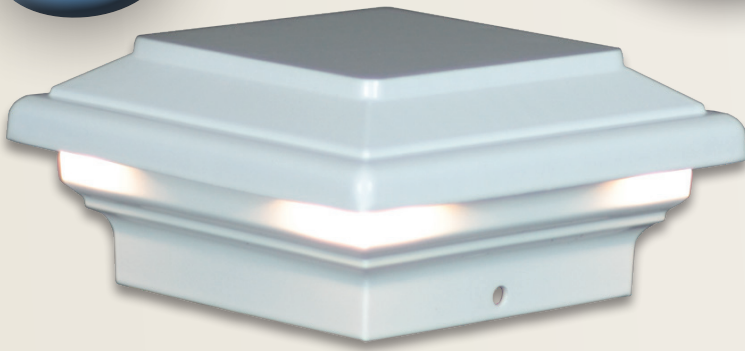
Legends: S = Standard Stock Light * = Requires Conversion Base = (48) Hour Lead Time



THE
NEPTUNE

NEW!

Uses Only...
2 WATTS!



The Neptune Light...
Shows-off a simple, yet sophisticated multi-layered post cap that will fit almost any design palette. The Low Voltage LED lights will add big money looks to your home, but little money cost to your electric bill. The LED lights illuminate down the post and surrounding area for an unequalled glow!

LOW VOLTAGE LIGHT (Note: 5-1/2" & 6" are 4W lights)

SIZE IN INCHES	M. Black	Black	White	Bronze	Tan	Walnut
3-1/2"	(48)	S	S	(48)		(48)
4"	(48)	S	S	(48)	S	(48)
4-5/8"	(48)	(48)	(48)	(48)		(48)
5"	(48)	S	S	(48)		(48)
5-1/2"	(48)	S	S			(48)
6"		(48)	(48)			

A Brighter Brilliance...
Equipped with 12 warm white Low Voltage LED lights that are sure to bring extra brilliance to your space with the Neptune.



See pages 20-21 for matching Post Caps and our Mini Lights.

Legends: S = Standard Stock Light (48) = 48 Hour Lead Time

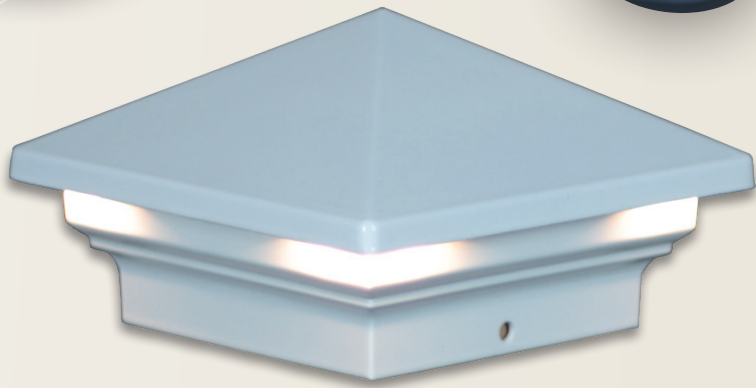


NEW!

THE VENUS

Uses Only...
2 WATTS!

BRIGHTNESS WHERE IT COUNTS...
The Venus is equipped with 12 bright warm white LED lights, that create a radiant glow that will bring a small burst of light to your outdoor space!



LOW VOLTAGE LIGHT
(Note: 5-1/2" & 6" are 4W lights)

SIZE IN INCHES	M. Black	Black	White	Bronze	Tan	Walnut
3-1/2"	(48)	S	S	(48)		(48)
4"	(48)	S	S	(48)	S	(48)
4-5/8"	(48)	(48)	(48)	(48)		(48)
5"	(48)	S	S	(48)		(48)
5-1/2"	(48)	S	S			(48)
6"		(48)	(48)			

THE Venus Light...

Gets straight to the point with an attractive pyramid design. This lighted post cap is anything but flat and boring, but is vibrant, fun and perfect for your home's outdoor spaces. Being made of a strong weather resistant coating, the Venus is built to last and keep your home looking its best for many years.

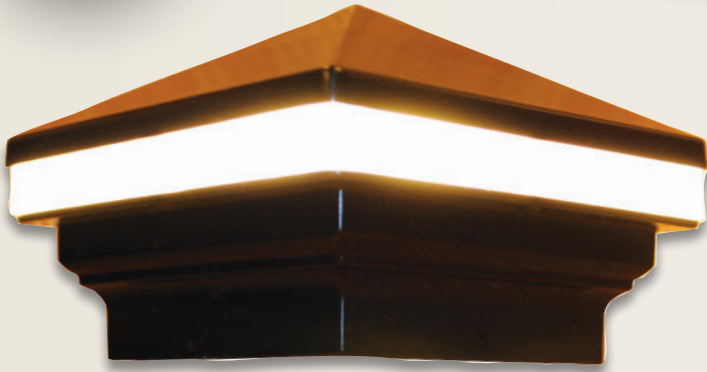
Coordinate your color and style with the unlighted Post Caps on page 21.

Legends: S = Standard Stock Light (48) = 48 Hour Lead Time



THE
IRIS

Uses Only...
1.6 WATT!



IRIS ANELLO
Accents the Night
Using Only 1.6 Watt of Electricity!

LOW VOLTAGE LIGHT
(Note: 5-1/2", 6" & 6-1/2" are 4W lights)

SIZE IN INCHES	M. Black	Black	White	Bronze	Tan	Clay	Walnut
	3-1/2"	(48)	S	S	S		
4"	(48)	S	S	S	(48)	(48)	(48)
4-3/8"	(48)	S	S	S	(48)	(48)	
4-5/8"	(48)	S	S	S			(48)
5"	(48)	S	S	S	(48)	(48)	(48)
5-1/2"	(48)	S	S	(48)			(48)
6"		(48)	(48)				
6-1/2"		(48)	(48)	(48)			

CREATE A SOFT... Ring of Light
To accent your deck railing. These warm white LED post cap lights use the latest technology to illuminate the acrylic lens, which positively impacts the outdoor living experience.

The pyramid-topped Iris Anello is a beautiful deck light that is both dramatic and environmentally friendly.

See pages 20-21 for matching Post Caps and our Mini Lights.

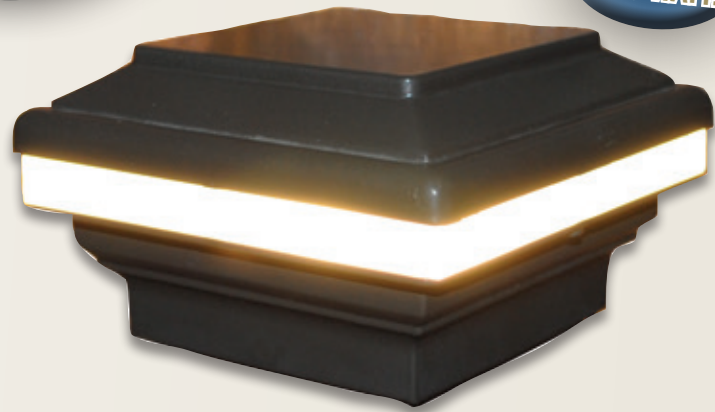
Legends:
S = Standard Stock Light
(48) = 48 Hour Lead Time



THE SATURN

Uses Only...
1.6 WATT!

SATURN ANELLO
Accents the Night
Using Only 1.6 Watt of Electricity!



LOW VOLTAGE LIGHTS: (Note: 5-1/2", 6" & 6-1/2" are 4W lights)
Offers widest range of lighting styles and colors.

SIZE IN INCHES	M. Black	Black	White	Bronze	Tan	Clay	Walnut
3-1/2"	(48)	S	S	S			(48)
4"	(48)	S	S	S	(48)	(48)	(48)
4-3/8"	(48)	S	S	S	(48)	(48)	
4-5/8"	(48)	S	S	S			(48)
5"	(48)	S	S	S	(48)	(48)	(48)
5-1/2"	(48)	S	S	(48)			(48)
6"		(48)	(48)				
6-1/2"		(48)	(48)	(48)			

Legends:

S = Standard Stock Light

(48) = 48 Hour Lead Time

ENVIRONMENTALLY FRIENDLY DECK LIGHT... *Uses Less Energy*

These lights use warm white LED technology which uses one twelfth the amount of electricity, to brighten a deck or fence post. The opaque lens shines lights outward like a ring, to create a unique lighting experience that is simple and easy to install.

Available in a Solar option on page 4, and matching Post Caps and Mini Lights on pages 20-21.



THE ODYSSEY

Aurora DECK LIGHTING'S DESIGN TEAM...

Has brought the highest standards in LED lighting options with the Odyssey LED Strip Lighting Kit!



Each kit comes complete with:

- 4 Strips of LED lights which is 1.5W per foot (choose from 4 lengths up to 48")
- Installation wire and connectors
- LED Driver box with timer, remote control and dimmer

EXPAND THE LOOK
Choose Your Length...

- 18" • 24" • 36"
- 48" • 72"

Expansion strips are available!

DECK LIGHT Drama...

Use Odyssey lights to create a dramatic curtain of light that shines down from under deck rails, stair rails, steps, soffits, patio covers, gazebos, or the underside of a deck. These long lasting tiny LED light bulbs, in their chain, puts out a beam of light with a 120 degree radius.



Up to 20 feet of strip lights can be powered by a single LED Driver Box.



LED STEP RISER HOUSING!

- Available in Black, Bronze, White

Odyssey LED STRIP LIGHTING...

Flexible design strip provides for easy adaptability in how and where they are installed and concealed in the step or rail.

THE PHOENIX

LIGHT IT UP WITH *Phoenix*...

Our Phoenix LEDs are just 1-1/8" wide. Their tiny size provides versatility for installing them flush with deck surfaces, for a seamless install that illuminates borders, or stairs for function and style. Additional lights may be purchased, either in pairs or bundles of ten, and up to 30 lights can be run off of one LED driver box.



Long Lasting LEDs..

Our .35W LED bulbs are rated to burn bright for years without replacement.

THE *Phoenix Kit* INCLUDES...

- Ten cool, warm or blue white LED bulbs
- LED Driver box with timer, remote control and dimmer
- Installation wire and connectors

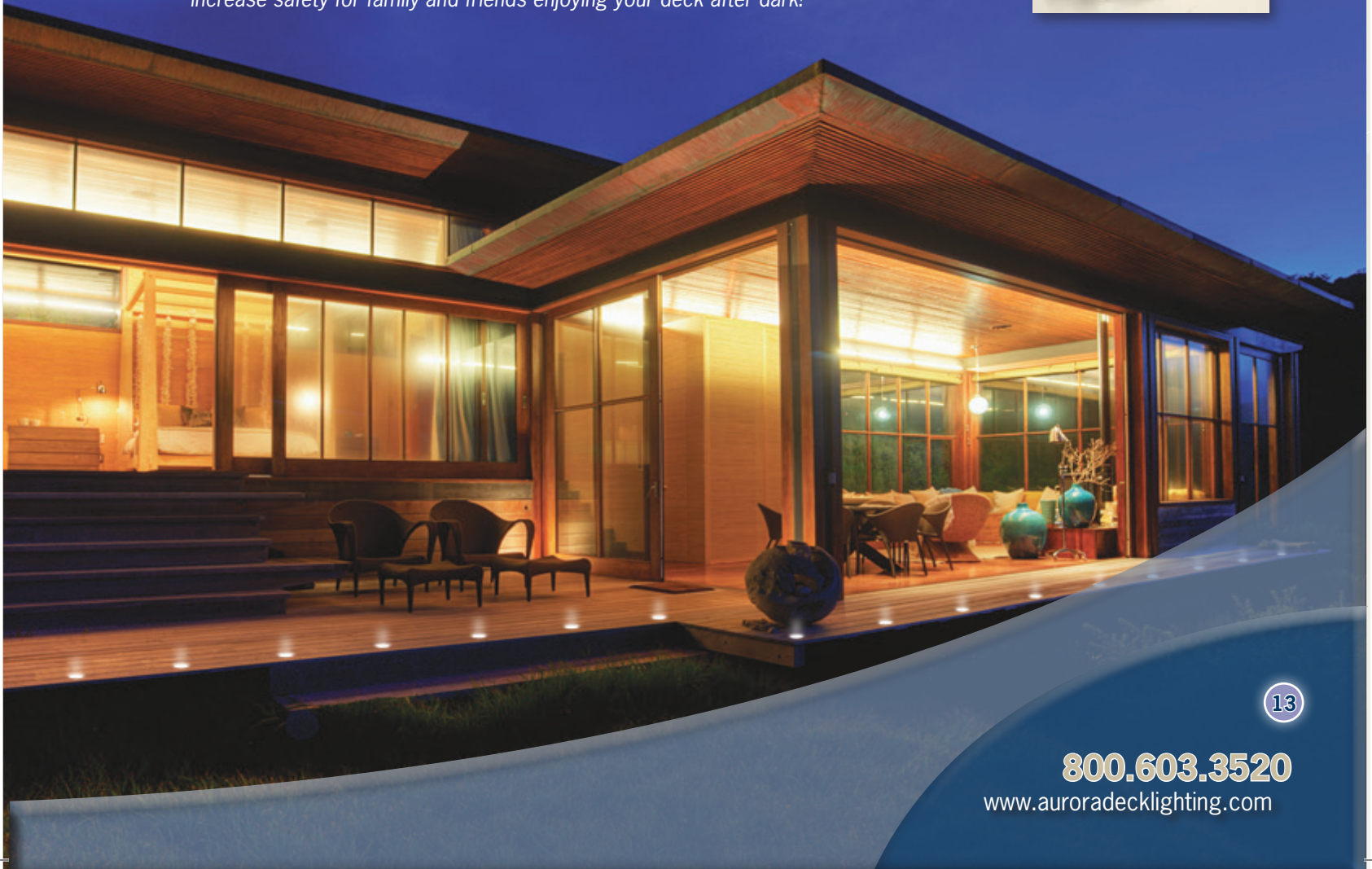


THE BIT *For a Perfect Fit...*

A specially designed drill bit is available to make drilling the perfect hole, an easy one-step process.



Phoenix RECESSED LEDs... Help to define deck borders and increase safety for family and friends enjoying your deck after dark!



THE COSMIC

Our Cosmic Star Lights...

Provide phenomenal low cost safety and ambience to steps and stairways!

Uses Only...
1.5 WATT!

THE CORONA

ENERGY Efficiency...

Brighten your pathways throughout the night, with our warm white LED lighting, while using energy wisely.



Face plate measurement:
4 1/2" W x 2 3/4" H

Legend: S = Standard Stock Light

Black	White	Bronze	Tan	Walnut
S	S	S	S	S

LOW VOLTAGE LIGHTS*



Uses Only...
6 WATTS!

THE PYXIS

PERFECT Pyxis...

Louvered design for stair safety, which provides recessed rays of warm white LED lighting.



Face plate measurement:
7 1/4" W x 3 3/4" H

Legend: S = Standard Stock Light

Black	White	Bronze	Tan
S	S	S	S

LOW VOLTAGE LIGHTS*



THE CORONA



THE PYXIS



THE COSMIC

Our Cosmic Star Lights...

Our post lamps are designed for deck, fence posts or any surface where a spot of accent lighting is desired to aid safe footing!

THE NEBULA



A Sphere...

Is a smooth design which directs warm white LED light down the post to the deck or walkway.

Size:
3 1/2" Diameter

Black	White	Bronze	Tan	Walnut
S	S	S	S	S

LOW VOLTAGE LIGHTS*



THE VEGA



Our Star...

A solid cast aluminum funnel light, featuring a bright warm white LED bulb.

Size: 3 1/4" W x 2 1/4" H x 1 3/4" D

Black	White	Bronze	Walnut
S	S	S	S

LOW VOLTAGE LIGHTS*



THE MINI NEBULA



A Mini Sphere... Smallest eyeball

design to direct warm white LED lighting for spaces measuring 1 3/4" in diameter.

M. Black	Black	White	Bronze	Walnut
S	S	S	S	S

THE MINI VEGA



Our Mini Star... Measures

1 3/8" H x 1 3/4" W, and includes a warm white LED bulb.

Black	White	Bronze	Walnut
S	S	S	S

Legends: S = Standard Stock Light

THE NEBULA



Uses Only...
1 WATT!

Uses Only...
1 WATT!

THE VEGA



THE TITAN


Uses Only...
1.6 WATT!



CLASSIC LANTERN STYLE... *The Titan Light*
Has the classic appeal of a lantern light with updated style.
It comes standard with heavy ribbed glass panels.
Crystallized glass can be purchased separately
for another distinctive look.

See pages 20-21 for matching Post Caps and our Mini Lights.

LOW VOLTAGE LIGHTS: 
Offers widest range of lighting styles and colors.

LINE VOLTAGE LIGHTS: 
Require a connection to 110 volt source which
makes these lights the brightest of all.

AN ARRAY OF OPTIONS...
The Titan is available in both line voltage
and low voltage styles, and includes a
warm white LED bulb. See the chart for
colors, sizes, and lighting source options.

- Legends:**
S = Standard Stock Light
* = Requires Conversion Base
48 = 48 Hour Lead Time

SIZE IN INCHES	LOW VOLTAGE LIGHTS					
	M. Black	Black	White	Bronze	Tan	Clay
2"		S		S		
2-1/2"		S		S		
3"		*	*	*		
3-1/2"	48	S	S	S		
4"	S	S	S	S	S	S
4-3/8"	48	S	S	S	48	48
4-5/8"	48	S	S	S		
5"	48	S	S	48	S	48



THE TRITON

STYLISHLY SOPHISTICATED... *The Triton Light*

Blends beautifully with numerous landscape themes!

The Triton Light is designed with the latest LED technology, using a low wattage panel of warm white LED nodes, which provides an intense stream of light across your pathways.

Our well constructed post light will never leave you in dark!

LOW VOLTAGE LIGHTS:
Offers widest range of lighting styles and colors.

SIZE IN INCHES	M. Black	Black	White	Bronze	Tan	Walnut
3-1/2"	(48)	S	S	S		(48)
4"	S	S	S	S	S	(48)
4-3/8"	(48)	(48)	(48)	(48)	(48)	
4-5/8"	(48)	(48)	(48)	(48)		(48)
5"	(48)	(48)	S	(48)	S	(48)
5-1/2"	S	S	S	S		
6"		(48)	(48)			
6-1/2"		(48)	(48)	(48)		

THE *Triton* OPTIONS...

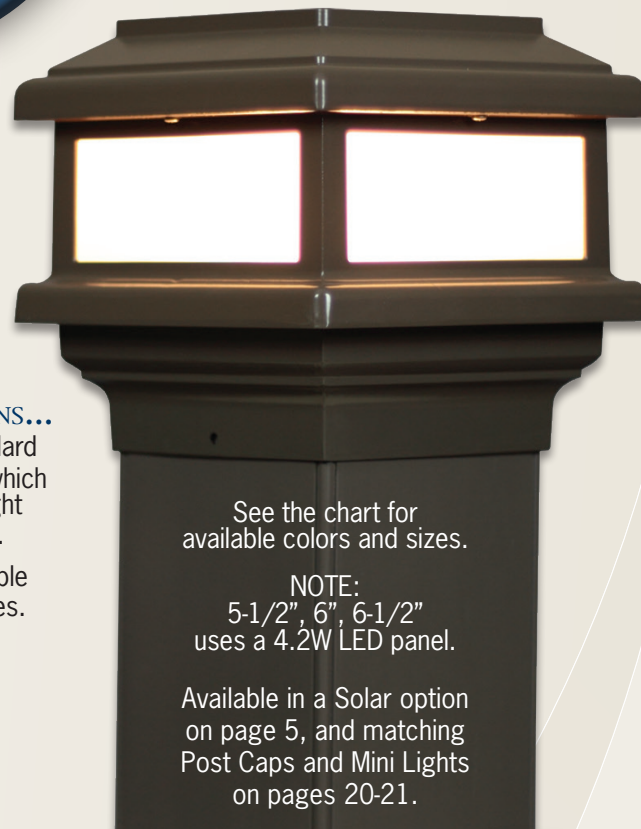
The Triton comes standard with our frosted glass, which adds a soft glow of light throughout the night.

This light is only available in our low voltage styles.

Ribbed, crystal glass available.

Legends:

S = Standard Stock Light
(48) = 48 Hour Lead Time



See the chart for available colors and sizes.

NOTE:
5-1/2", 6", 6-1/2"
uses a 4.2W LED panel.

Available in a Solar option on page 5, and matching Post Caps and Mini Lights on pages 20-21.



Uses Only...
1.6 OR 4.2 WATTS!

THE ORION



GEOMETRIC DESIGN ELEMENT... *The Orion Light*

Is the first of Aurora's Deck Lights that uses a geometric shape in front of the glass creating a new element of design.

This new concept makes the Orion Light a beautiful accessory that adds another level of distinction, regardless of the time of day.

See pages 20-21 for matching Post Caps and our Mini Lights.

A SOLID DECISION...
Made of solid cast aluminum.
See chart for size and color.
Includes a long lasting warm white LED bulb.

- Legends:**
S = Standard Stock Light
***** = Requires Conversion Base
(48) = 48 Hour Lead Time

LINE VOLTAGE LIGHTS:
Require a connection to 110 volt source which makes these lights the brightest of all. **||**

SIZE IN INCHES	Black	White	Bronze	Tan	Clay
4"	*	*		*	*
4-3/8"					
4-5/8"					
5"	*	*			

LOW VOLTAGE LIGHTS: **●**
Offers widest range of lighting styles and colors.

SIZE IN INCHES	M. Black	Black	White	Bronze	Tan	Clay
3"		*	*	*		
3-1/2"	(48)	S	S	S		
4"	S	S	S	(48)	S	S
4-3/8"	(48)	(48)	(48)	(48)	(48)	(48)
4-5/8"	(48)	(48)	(48)	(48)		
5"	(48)	S	S	(48)	(48)	(48)

Uses Only...
1.6 WATTS!



THE SIRIUS

LOW VOLTAGE LIGHTS:
Offer widest range of lighting styles and colors.

SIZE IN INCHES	M. Black	Black	White	Bronze	Tan	Clay
	3"		*	*	*	
3-1/2"	(48)	S	S	S		
4"	S	S	S	(48)	S	S
4-3/8"	(48)	(48)	(48)	(48)	(48)	(48)
4-5/8"	(48)	(48)	(48)	(48)		
5"	(48)	(48)	S	(48)	S	(48)

LINE VOLTAGE LIGHTS:
Require a connection to 110 volt source which makes these lights the brightest of all.

SIZE IN INCHES	Black	White	Bronze	Tan	Clay
	4"	*	S		*
4-3/8"		*		*	
4-5/8"		*	*		
5"		S		*	

A MYRIAD OF COLORS...
The Sirius Deck Light comes in six powder coated colors that coordinate beautifully with wood, composite decking, or vinyl deck and fence materials. Ribbed glass can be purchased separately for a different lighting look.



TRADITIONAL PYRAMID DESIGN... *The Sirius Light*

Available in both low voltage and line voltage, the Sirius light has a traditional appeal with its pyramid-shaped design of solid aluminum. The crystallized glass of the Sirius is a standard feature that creates a flicker-like swath of warm white LED lighting.

See pages 20-21 for matching Post Caps and our Mini Lights.

Legends: S = Standard Stock Light * = Requires Conversion Base (48) = 48 Hour Lead Time



Uses Only...
1.6 WATT!

THE MINIS

THE MINI VERSIONS OF OUR *Aurora's Deck Lights*... Provide even more versatility for creating the ultimate landscape showcase to impress the most cultured individual.

Uses Only...
1 WATT!



THE MINI *Saturn Flat Top LED*...

Brings intricate detail, and a glowing warm white LED light to your outdoor living environment.

SIZE IN INCHES	M. Black	Black	White	Bronze
2"	S	S	S	S
2-1/2"	S	S	S	S
3"	S	S	S	S

Available without Dentil Molding!

Legend: S = Standard Stock Light

THE MINI SATURN FLAT TOP LED



THE MINI *Titan Deck Light*...

is designed for the Ornamental Iron and Aluminum Rail Fence Systems, while using a glowing warm white LED lighting.

SIZE IN INCHES	M. Black	Black	White	Bronze
2"	S	S	S	S
2-1/2"	S	S	S	S

Uses Only...
1.6 WATT!

Legend: S = Standard Stock Light

THE MINI TITAN LIGHT



THE MINI POLARIS SOLAR LIGHT

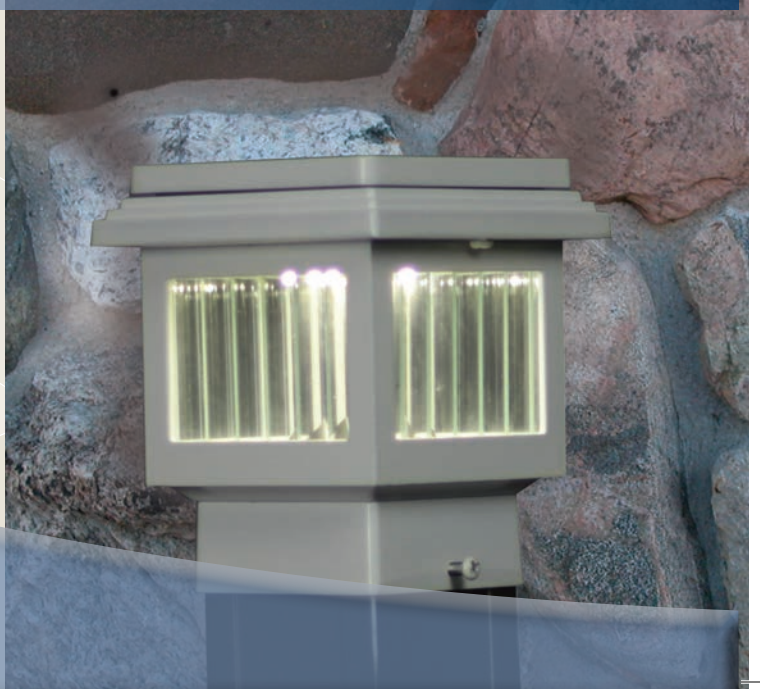


THE MINI *Polaris SOLAR Light*...

is designed for the Ornamental Iron and Aluminum Rail Fence Systems. Includes a cool white LED bulb.

SIZE IN INCHES	M. Black	Black	White	Bronze
2"	S	S	S	S
2-1/2"	S	S	S	S

Legend: S = Standard Stock Light



THE POST CAPS

MANY OF *Aurora's Deck Lights...* Are available in matching post caps for coordinated style where lights are not needed. Post Caps come in a variety of styles, colors and sizes. See the charts for specifics, or contact Aurora for more information.

THE MINI FLAT TOP MATCHING CAPS



Available without Dentil Molding!

OUR *Mini Flat Top Post Cap...* Has a striking architectural appeal for your design!

SIZE IN INCHES	M. Black	Black	White	Bronze
2"	S	S	S	S
2-1/2"	S	S	S	S
3"	S	S	S	S

See page 20, for matching Post Cap Lighting options!

Legend:
S = Standard Stock Light



THE SIRIUS MATCHING CAPS



SIZE IN INCHES	M. Black	Black	White	Bronze	Tan	Clay	Walnut
3"		*	*	*			
3-1/2"	(48)	S	S	S			(48)
4"	(48)	S	S	(48)	S	S	(48)
4-3/8"	(48)	(48)	(48)	(48)	(48)	(48)	
4-5/8"	(48)	(48)	(48)	(48)			(48)
5"	(48)	(48)	S	(48)	(48)	(48)	(48)
5-1/2"	(48)	S	S	S			(48)
6"		(48)	(48)				
6-1/2"		(48)	(48)	(48)			

See pages 9, 10, 19, for a variety of matching Post Cap Lighting options!

Legends:

- S = Standard Stock Light
- * = Requires Conversion Base
- (48) = 48 Hour Lead Time



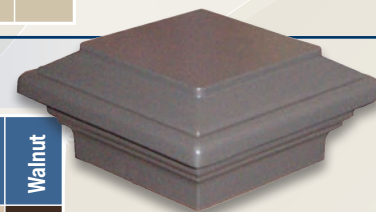
THE TITAN MATCHING CAPS



Legends:
S = Standard Stock Light
* = Requires Conversion Base
(48) = 48 Hour Lead Time

SIZE IN INCHES	M. Black	Black	White	Bronze	Tan	Clay	Walnut
3"		*	*	*			
3-1/2"	(48)	S	S	S			(48)
4"	(48)	S	S	(48)	S	S	(48)
4-3/8"	(48)	(48)	(48)	(48)	(48)	(48)	
4-5/8"	(48)	(48)	(48)	(48)			(48)
5"	(48)	(48)	S	(48)	(48)	(48)	(48)
5-1/2"	(48)	S	S	S			(48)
6"		(48)	(48)				
6-1/2"		(48)	(48)	(48)			

See pages 4 - 8, 11, 16-18, for a variety of matching Post Cap Lighting options!



LIGHTING ACCESSORIES

LIGHTING ACCESSORIES

Aurora Deck Lighting offers an array of accessory lights and hardware to enhance the deck's appearance.



Horizontal Rail Adapter



Warm White & Cool White LED Bulbs



12 & 18 Gauge Low Voltage Wire



Pigtails



Transformers

COLOR OPTIONS



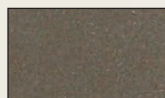
MATTE BLACK



BLACK



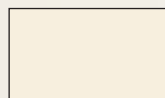
WHITE



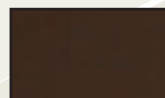
BRONZE



CLAY



TAN



WALNUT

WIRING INSTRUCTIONS

AURORA DECK LIGHTING OFFERS A PROPRIETARY PIGTAIL CONNECTOR, WHICH CONNECTS THE LIGHT FIXTURE TO THE MAIN LOW VOLTAGE LINE!

This simple to use connector is self piercing and requires no cutting or splicing. Provides a long lasting and weatherproof connection. Available in 12", 60" and 96" depending on post length. Order one per light.

Unscrew the pigtail housing, press in place the 12 volt main line across the two metal piercing connectors, so that the metal piercing connectors make a good contact with the wire. Run the pigtail wire up the post, and connect (snap) the deck light leads to the pigtail leads. This pigtail can be buried, installed in the railing, or in the joist structure. Place the deck light onto the post and screw the deck light to the post using the two screws provided.

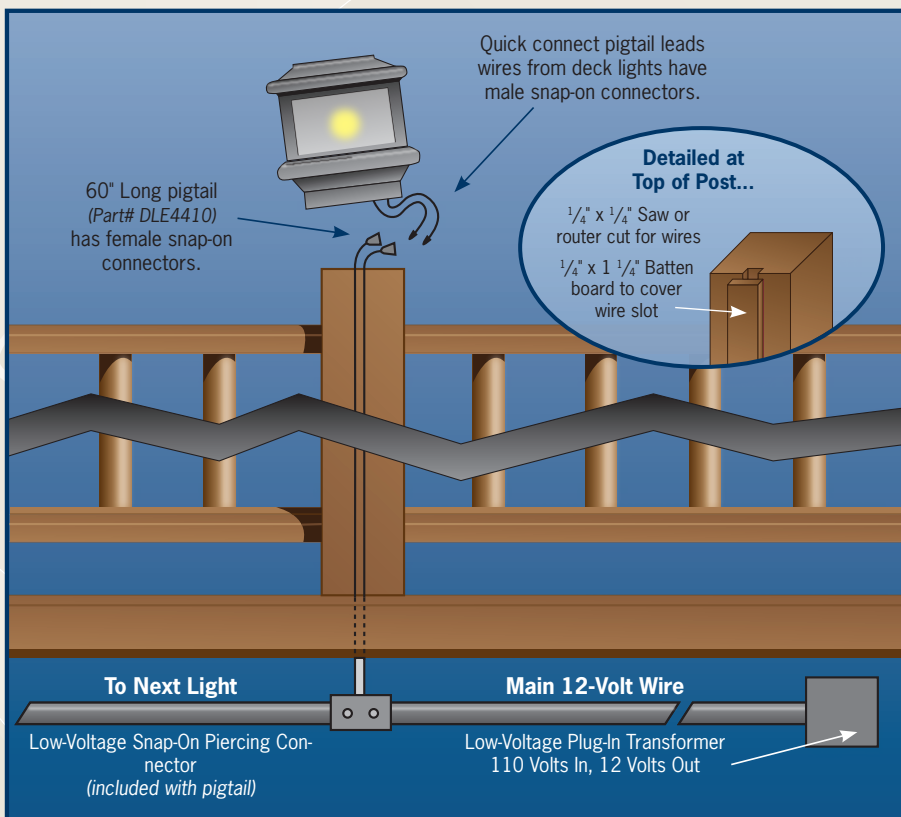


PHOTO
GALLERY



**PHOTO
GALLERY**



PHOTO GALLERY



Photo Credit: Hickory Dickory Decks, DE



**PHOTO
GALLERY**



PHOTO
GALLERY





Aurora
DECK LIGHTING...

Uses the Latest Technology
to Bring Many Years of
Care-Free Enjoyment!



Aurora *

DECK LIGHTING

www.auroradecklighting.com

800.603.3520

fax: 262.472.6268

960 E. Milwaukee St.

Whitewater, WI 53190