

# Fascia Mount Posts and Bracket Kits Help Sheet

4 Easy Steps

## 1 Fascia Mount Post

2" x 61" HD Posts are drilled for quick and easy installation.



Fascia Mount Line Post  
#173838



Fascia Mount Corner Post  
#173839

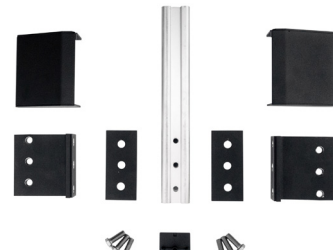


## 2 Fascia Mount Bracket Kit

Fascia Mount Bracket Kits include all parts needed to install the Bracket to the Post.



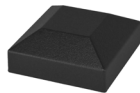
Fascia Mount Bracket Kit  
for Line Post #173840



Fascia Mount Bracket Kit  
for Corner Post #173841

## 3 Post Cap

Post Caps are not included with the Fascia Mount Posts or Bracket Kits. Please order separately.



Flat Cap  
#170983



Ball Cap  
#170984

## 4 Support Bracket

Support Brackets are needed when installing a section that requires a rail support.



Fascia Mount Support Bracket  
#173365

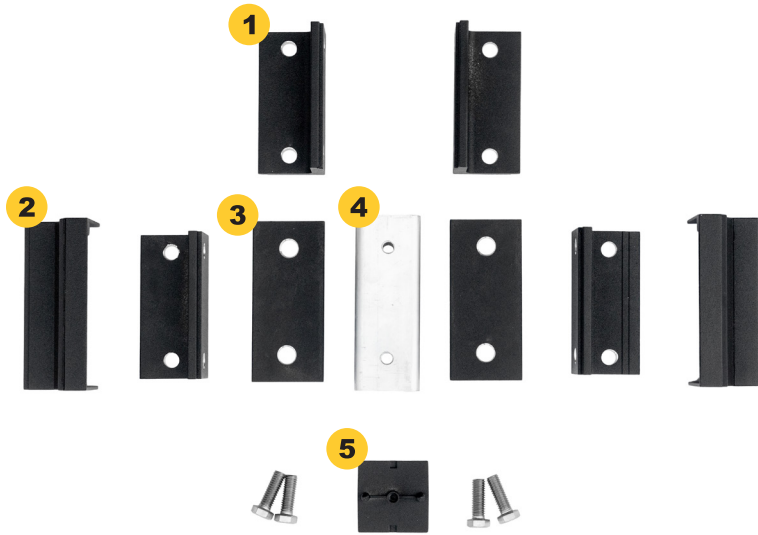


# Fascia Mount Posts and Bracket Kits Help Sheet

Replacement Parts

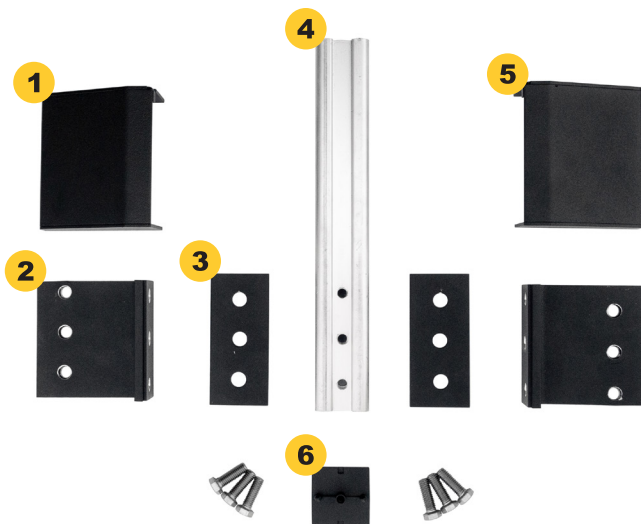


## Fascia Mount Bracket Kit for Line Post



- 1** Fascia Mount Line Post Bracket (4)
- 2** Fascia Mount Line Post Cover (2)
- 3** 1/4" x 2" x 4-1/2" Fascia Mount Line Post Plate (2)
- 4** 4-3/4" Fascia Mount Line Post Aluminum Insert (1)
- 5** 2" Fascia Mount Bottom Cap (1)

## Fascia Mount Bracket Kit for Corner Post



- 1** Fascia Mount Corner Post Cover (Left) (1)
- 2** Fascia Mount Corner Post Bracket (2)
- 3** 1/4" x 2" x 4-1/2" Fascia Mount Corner Post Plate (2)
- 4** 12-1/4" Fascia Mount Corner Post Aluminum Insert (1)
- 5** Fascia Mount Corner Post Cover (Right) (1)
- 6** 2" Fascia Mount Bottom Cap (1)