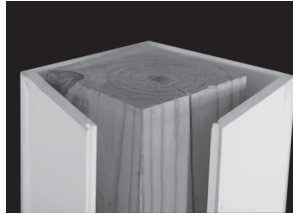


# VERSAWRAP™

## One-Piece Column Wrap

VERSAWRAP column wraps are individually packaged in a cardboard sleeve and folded to protect the exterior faces of the wrap. Care should be taken in handling the individual wraps to prevent tearing of tape or excessive cracking at the lockmiter joints. If possible, keep the wraps in a warm place before use.

**STEP 1:** Ensure the structural post is sound, straight, and true. If necessary, install thin furring strips or shims (insulation board) to the structural column approximately 4" down from the top center and approximately 4" up from the bottom so that the wrap fits tightly around the structural column/post. Shim all four (4) sides evenly to maintain an equal spacing around the column/post. Be sure the furred/shimmed strips' outside dimensions are no wider than the inside dimension of the VERSAWRAP column wrap.



**STEP 2:** Apply an adhesive that offers enough cure/working time so it can be applied in the four joints and wrapped around the structural column/post before curing. PVC glues with solvent work well, provided you apply them quickly. Apply PVC glue by squirting it into the four joints using a plastic squeeze bottle with a thin, tapered nozzle applicator, like a ketchup bottle or a 5 ounce tube of Weld-On 705. PVC adhesives such as Weld-On 705, Christy's Red Hot or TrimWelder White Hot are a few recommended solvent based PVC adhesives. Do not use thick 2-component adhesives. They will fracture the miter corners. PVC glue softens the joint of the VERSAWRAP reducing cracking of the cellular PVC at the outside corners of the wrap. Remember to apply the adhesive to only one surface of the miter lock joints. **NOTE:** Four VERSAWRAPs can be glued using one 5 ounce tube of Weld-On 705 regardless of column length.



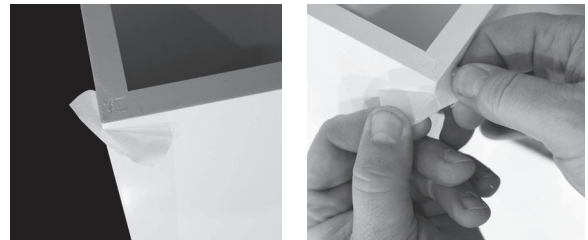
**STEP 3:** Once the glue is placed in the VERSAWRAP joints, immediately place it around the structural column or post, pushing the miter lock joint together. Using hand pressure, make sure the locking tongue is properly inserted into the locking groove before completely closing the joint. Close the VERSAWRAP joint with a piece of scrap PVC trim and a dead blow hammer. Strike the wrap over the joint, not to the right of it, especially during periods of cold weather. If the lockmiter joint is tight, consider wrapping a piece of 320 grit sand paper around a shim or ruler and run it through the groove to loosen the joint. If necessary, take a sanding block with

320 grit sand paper and lightly sand the outside of the lockmiter joint to smooth out any rough spots.

**STEP 4:** Secure the VERSAWRAP column wrap to the structural column using stainless steel nails that penetrate through the furring strips to the structural post.

**STEP 5:** Remove the tape from the corners no more than four hours after installation. To remove the tape, be sure the entire width of tape has been lifted across the top before pulling it down the column. If you try to pull the tape down by starting at only one corner, the tape will split into thin slivers. When the tape is started evenly across its entire width and slowly pulled down the column wrap, it will pull off in one piece. Most PVC adhesives set in minutes, not hours, allowing you to remove the tape soon after the column has been installed.

**NOTE:** Leaving the tape on the column wrap and exposed to the UV rays of the sun for more than 24 hours will make it difficult to remove and may leave adhesive residue on the column wrap.



**REMOVING TAPE:** There are two things to watch when removing the tape on a VERSAWRAP. First, it is critical that you start by pulling the ENTIRE piece of tape away from the top or bottom of the corner; don't try to pull it off from only one side, or at an angle or with one hand. Secondly, pull the piece of tape straight down and don't try to pull it off too quickly. Again, use both hands. If the end of the board has been cut and the tape is embedded in the PVC wrap, be sure the entire width of tape has been started across the top before pulling it down.

**TIP:** Mild cleaners or a solvent can be used to remove any residual adhesive resulting from leaving the tape on the column wrap for an extended period of time. Use a hair dryer to help remove the tape at temperatures below 40°F.

## Painting

VERSATEX does not require painting for protection. Use paints that are 100% acrylic latex or acrylic latex with urethane additive. **\*\*CAUTION: PAINTING ANY CELLULAR PVC TRIM, INCLUDING VERSATEX, DARK COLORS, CAN RESULT IN POOR PERFORMANCE AND WILL VOID THE WARRANTY. USE PAINTS WITH A LIGHT REFLECTIVE VALUE (LRV) OF 50 UNITS OR GREATER.**

- Options for dark colors: consult AquaSurTech OEM or Blue River Coatings on “heat reflective” paints in applications where the paint color has an LRV value less than 50 units. When using paints, the liability of performance rests with the paint manufacturer. “Heat reflective” paints with an LRV between 40 and 50 have proven successful in the field.
- To obtain adequate paint adhesion, be sure the surface of the VERSATEX Trimboard is clean, dry and free of dirt, loose or peeling paint, mildew, chalk, grease and any other surface contaminants before applying paint. Use a mild detergent (Spic and Span®) and water or denatured alcohol for cleaning.
- Paint can take up to 30 days to fully cure depending on outside temperatures, humidity conditions and possibly other local factors.
- Paint life is longer when applied to VERSATEX versus wood due to the absence of moisture in our trim.
- Follow the paint manufacturer’s surface preparation and application recommendations.
- In most cases, the paint manufacturer will require a primer if the homeowner wants the paint warranty.

## Moisture

VERSATEX can be installed at or below grade, as it does not wick moisture. VERSATEX is perfect for use in moisture-prone applications such as garage door jambs, column wraps, ground contact, masonry contact, hot tub surrounds, and at rooflines.

## Cleaning

- VERSATEX will not support mold and mildew growth. (ASTM G-21-96)
- If product gets dirty, clean with products like Soft Scrub® with Bleach, Spin and Span®, Clorox® Regular Bleach, Clorox® Clean-Up®, Clorox® Outdoor Bleach Cleaner, or Corte Clean. Use a nylon brush for stubborn stains or to get dirt out of the cells. Use 320 grit sand paper to reduce cell size on cut edges of boards.

## Storage and Handling

- Store VERSATEX on a flat level surface.
- Handle VERSATEX as you would “premium” lumber
- Keep VERSATEX free of dirt and debris. Clean VERSATEX after installation as previously described.
- Do not store or place on asphalt or in areas prone to excessive heat build-up.

## Safety

- All machining should be done in a well-ventilated area.
- Safety glasses should be worn whenever you are working with VERSATEX.
- When cutting with a powersaw, a dust mask is recommended.

**VERSATEX®**  
T R I M B O A R D

A product of  
**VERSATEX Building Products, LLC**  
400 Steel Street, Aliquippa, PA 15001  
724.857.1111  
[www.versatex.com](http://www.versatex.com)