

For more information, view our Web site at www.deckimages.com



Pro Series

Glass and Aluminum
Railing Systems





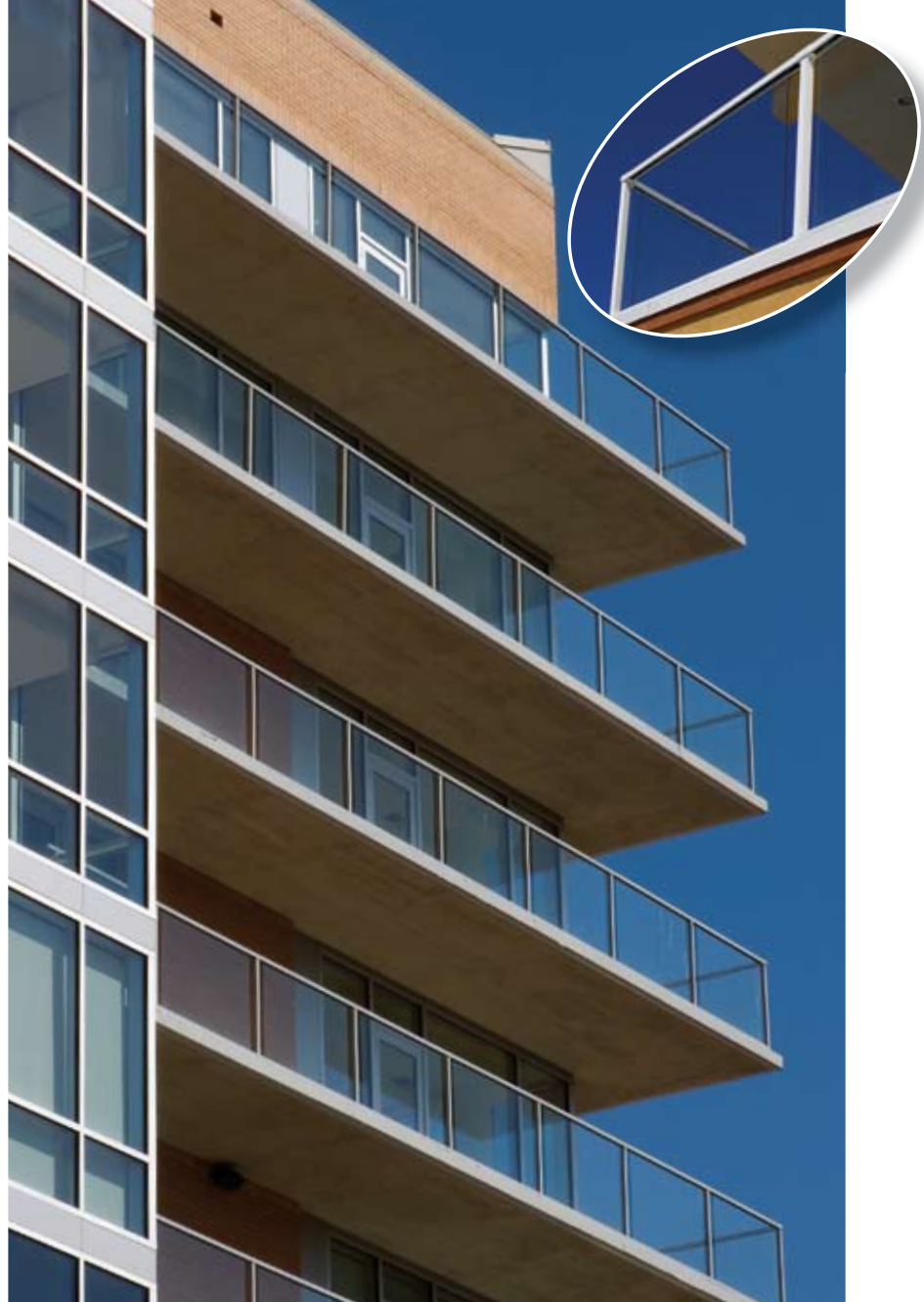
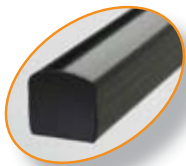
Deck Images™

Imagine the Possibilities™

Pro Series

The design professional's choice for seamless railings, Deck Images glass and aluminum railing systems provide a continuous top rail—without protruding posts. With a premium powder-coated finish for corrosion protection and color fastness, Deck Images railing systems are guaranteed for 15 years. All pieces are compatible with wood, composite and concrete surfaces.

Create your railing by choosing from five standard colors, or select a custom color to complement your unique design. Railings are available in 36 and 42 heights, 12 and 24-long railing sections. Also available are stair rails in 12 and 18 lengths. Stair angles include 32°, 35°, 37° and custom angles.



Adagio, Chevy Chase, MD

Glass Panels

Post and Post Connectors

Deck Images angle brackets provide for 90- and 45-degree connections. High-grade aluminum posts feature the strongest base plate attachment in the industry.



Custom Applications

Our clients' award-winning designs often require unique railings. We work with designers and architects to build distinctive, custom railings to your exact specifications. Most custom orders can be completed within just four to six weeks.

Glass



Contemporary, low-maintenance Deck Images glass railings work with your building's design, not against it. Offering maximum visibility combined with reliable safety, these railings are ideal for projects where the view is paramount.

Aluminum



Deck Images aluminum welded baluster railing systems offer a more traditional, yet beautiful look to your commercial or residential project. They are suitable for structural applications such as securing to balconies, retaining walls and staircases. Exceptionally durable and rust-resistant, Deck Images aluminum railings add value and distinction to your project. Welded baluster system provides strength with ease and speed of installation.



Colors Our glass and aluminum powder-coated railings come in five standard colors. If a custom color is required, we will be happy to work with you to create a color that complements your building's unique design.



Clay



Black



White



Green



Taupe

Destin West, Fort Walton Beach, FL
Custom Rail Design with Glass Panels



Cover Photography:
Coral Seas Bayfront Condominium
Ocean City, MD
Glass Panels

This Page:
Watermark Golf Course view
Grand Rapids, MI
Glass Panels

Pensacola Beach, FL
Glass Panels

Cornelia Place
Minneapolis, MN
Square Balusters

Frequently Asked Questions

Are gates available?

We offer glass and aluminum gates that include standard hinges and a latch. Our gates come in knockdown kits and require assembly.

Where can I buy Deck Images Pro Series Railing and how much does it cost?

Deck Images Pro Series Railing is available at select lumberyards and specialty centers. For more information, visit the how-to-buy section of our Web site or call 877-446-7397. It is competitively priced in comparison to other premium railing systems.

Is frosted or tinted glass available?

Yes. Frosted and tinted glass are available.

Can I purchase the glass from a supplier other than Deck Images?

Yes. Our versatile system will work with any ¼ or ⅜" tempered safety glass.

Is there a warranty?

Deck Images railing is covered by a 15-year limited powder coat warranty which warrants the finish against visible checks, cracks, showing chalking and color change.

Installation

How far apart can the posts be spaced?

Posts can be spaced a maximum of 6 on-center.

Do I need special tools to install the railing?

Conventional tools can be used for cutting, drilling and fastening. For your safety, remember to wear protective clothing and safety glasses.

What can I use to cut the railing?

We recommend using a sharp, carbide-tipped, multipurpose saw blade.

Can the railing system be installed on concrete?

Pro Series railing can be installed on concrete. There may be additional items required for installation, such as a hammer drill, masonry bits and concrete anchors.

Care and Cleaning

How should the glass be cleaned?

Use a mild household detergent and water mixture to clean the glass then rinse with clean water. If desired, the use of a glass treatment, such as Rain-X®, will help repel water and reduce water spots.

System Evaluation:

1. Deck Images railing products have been evaluated for structural integrity by an independent laboratory through full-scale assembly testing. Deck Images 42 high Pro Series railing system was evaluated with a total railing span of 144 in a complete assembly. A center post (6005-T5 Aluminum) was located midway in the railing assembly (72 center-to-center from the corner post). Return railing sections were provided at each end of the 144 span, with the return rail connected to wood framing using a "Top Connector" (6063-T5 aluminum). The Pro Series system has been evaluated with the ⅝" aluminum welded balusters (6063-T5) and ¼" tempered glass panels (ANSI Z 97.1 tempered glass); the post base plates (6061-T6) have been evaluated for anchorage into both concrete substrate and wood substrate. Hilti KB3 SS304 ¼" x 3 wedge anchors (or equal) with a 2 ½" nominal embedment were used in the concrete substrate condition. A #14 x 3 18-8 stainless steel screw (or equal) was used on southern pine for the wood substrate condition. The concrete substrate shall be designed by a registered engineer to properly receive the load from the railing system. When the guardrail is installed in configurations other than described above, the fasteners must be specified by a design professional.
2. When Deck Images systems are assembled under the conditions described above, the railing meets the guardrail requirements of 1607.7.1 of the 2006 International Building Code (IBC).
3. When Deck Images guardrail is installed in configurations other than described above, each installation shall be designed using numerical methods by a registered professional engineer licensed in the state in which the project is constructed. Sealed shop drawings shall be made available to interested parties to demonstrate compliance with applicable building codes.
4. If Deck Images railing is installed contrary to the specific assembly described above and sealed engineering drawings are not available, then the railing is intended for decorative purposes only and cannot be used in applications where a structural railing system is required by building code.

www.deckimages.com