

DESIGN

PURCHASE

CONSTRUCT

ENJOY

OZCO Project #316 - 12x12 Pergola Double Beam



OZCO BUILDING PRODUCTS

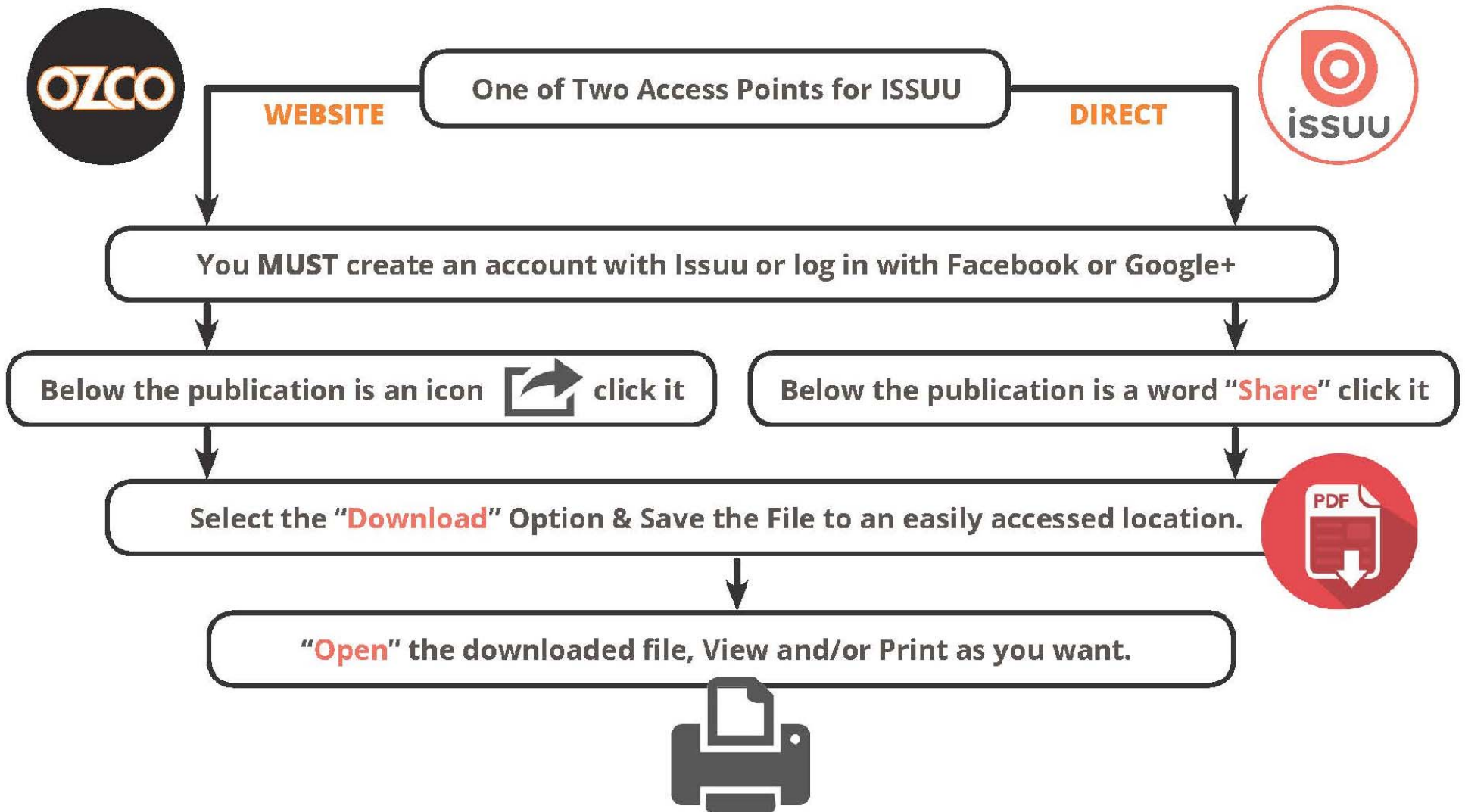
OZCO Project #316 - 12x12 Pergola Double Beam

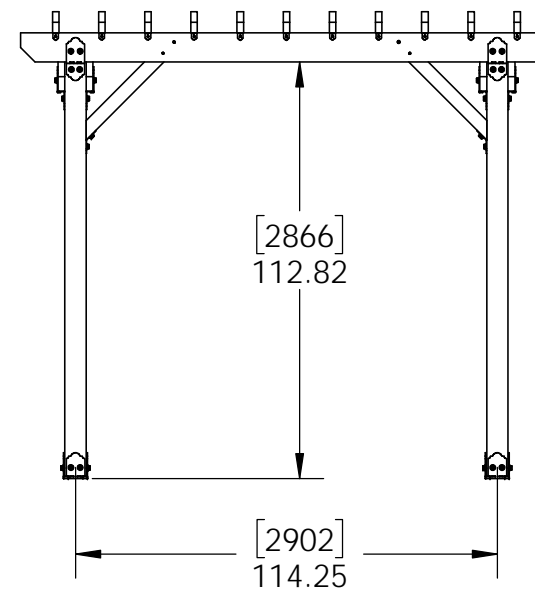
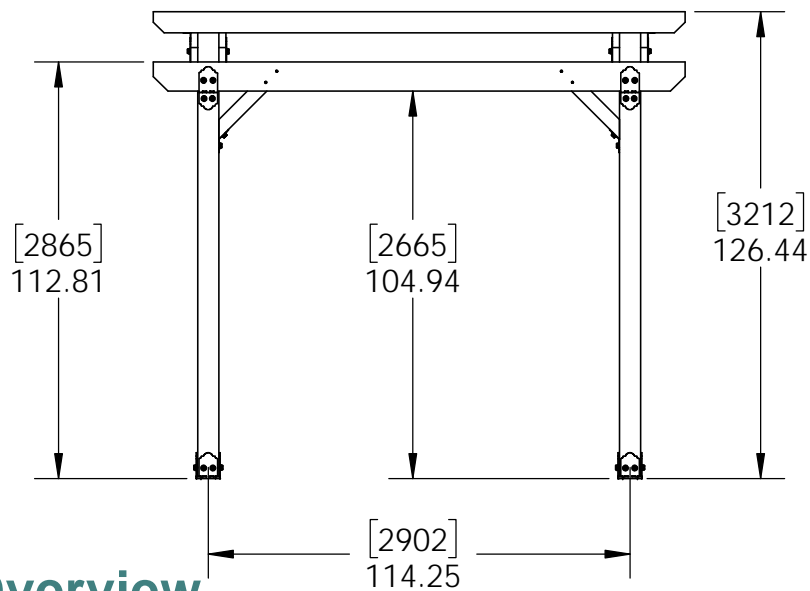
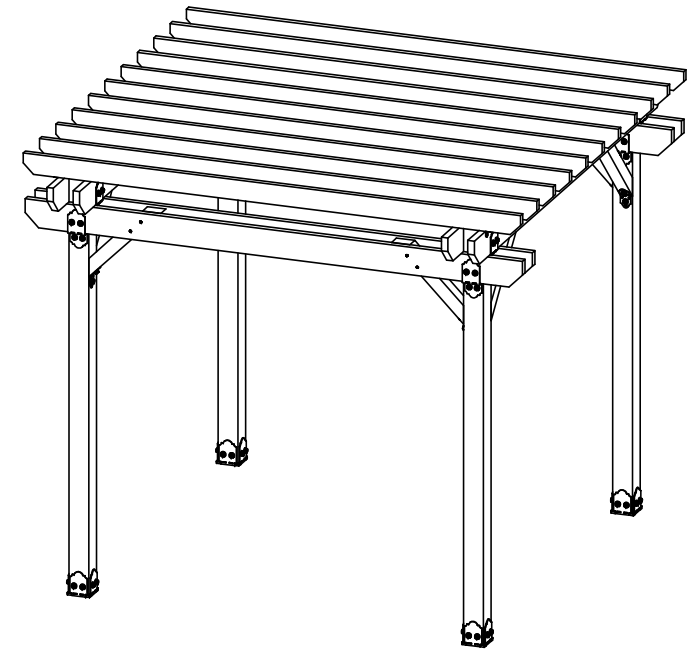
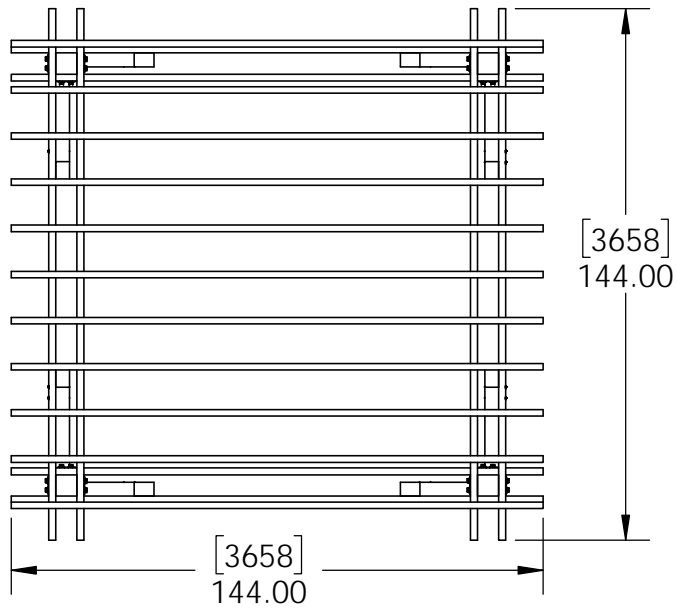
V1.00 - Installation Instructions effective May 1, 2015 and reflects information that available as of April 10, 2014. This information is updated periodically and should not be relied upon after May 1, 2015. Please visit www.OZCOBP.com to get current information



Printing Documents from ISSUU

Unfortunately, there is currently no way to print content directly through issuu. To print a publication, you will need to download it and print it from your computer.

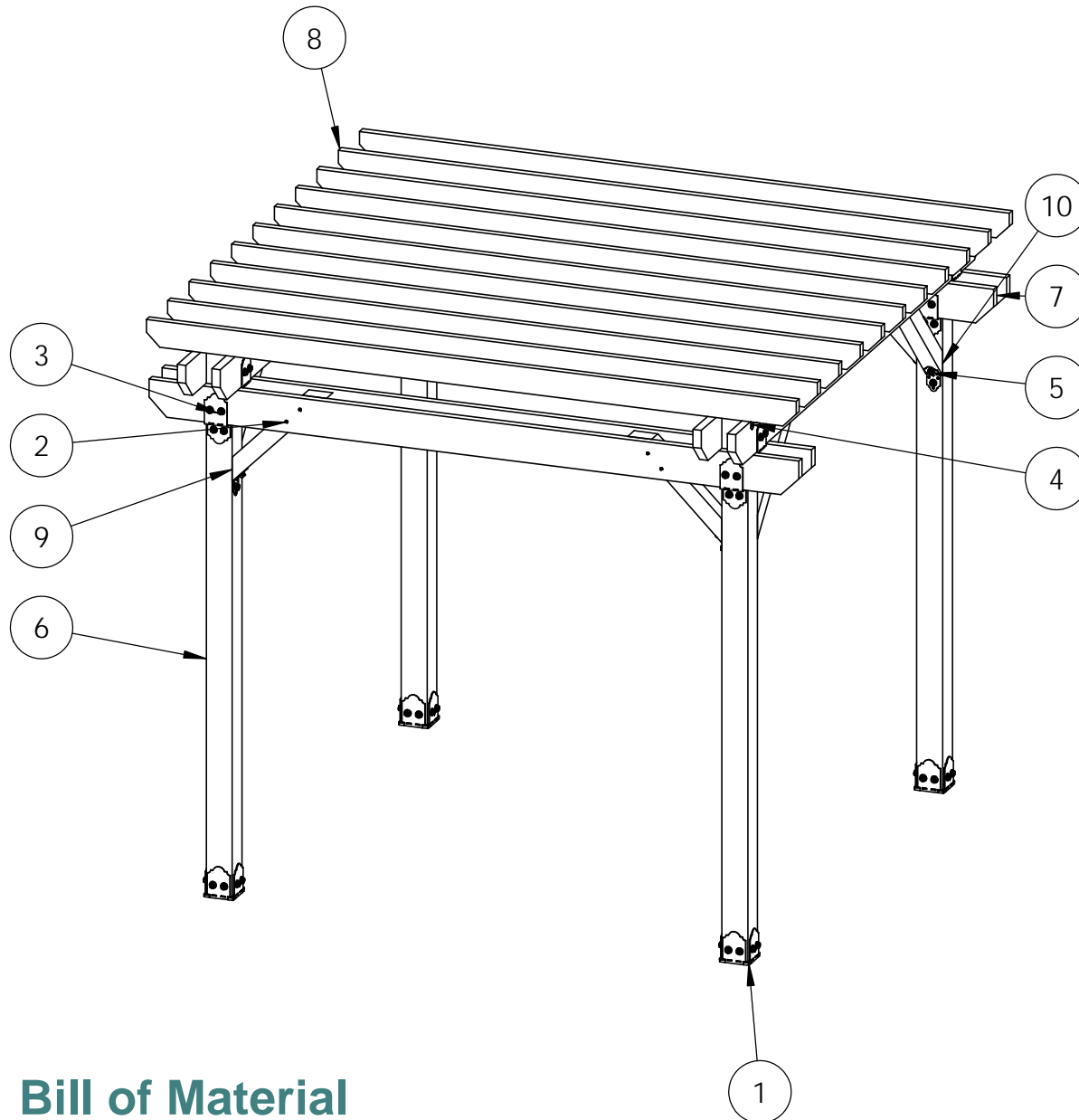




Overview

OZCO Project #316 - 12x12 Pergola Double Beam

V1.00 - Installation Instructions effective May 1, 2015 and reflects information that available as of April 10, 2014. This information is updated periodically and should not be relied upon after May 1, 2015. Please visit www.OZCOBP.com to get current information

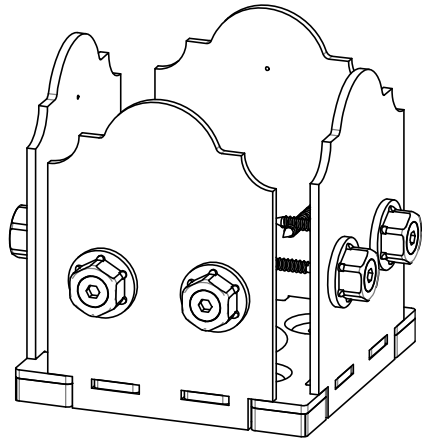


ITEM NO.	QTY.	PART NUMBER	DESCRIPTION
1	4	56608	6x6 Post Base (6x6-PB-LS)
2	0.6	56628	Screw, OWT 5-3/4" (145mm) Timber
3	8	56610	8" Post to Beam (P2B-LS-8)
4	2.2	56617	2" Standard Rafter Clip (RC-LS-2)
5	2	56668	4" Flush Inside 45 (FI45-LS-4)
6	4	6x6 Cedar Post	6x6x120.00
7	8	2x8 Cedar Board	2x8x144.00
8	11	2x6 Cedar Board	2x6x144.00
9	4	4x4 Cedar Support	4x4x29.50
10	4	4x4 Cedar Support	4x4x41.00

Bill of Material

OZCO Project #316 - 12x12 Pergola Double Beam

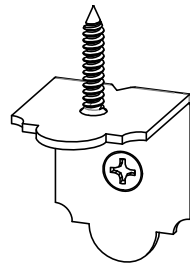
V1.00 - Installation Instructions effective May 1, 2015 and reflects information that available as of April 10, 2014. This information is updated periodically and should not be relied upon after May 1, 2015. Please visit www.OZCOBP.com to get current information



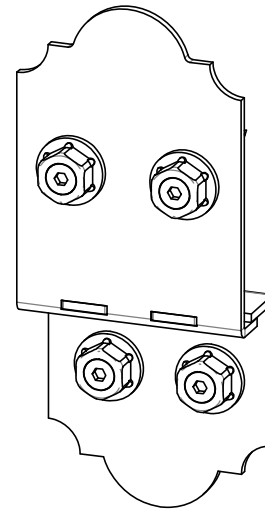
56608



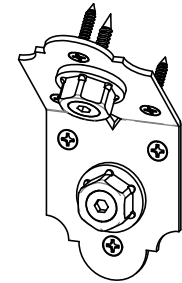
56628



56617



56610



56668



DESIGN

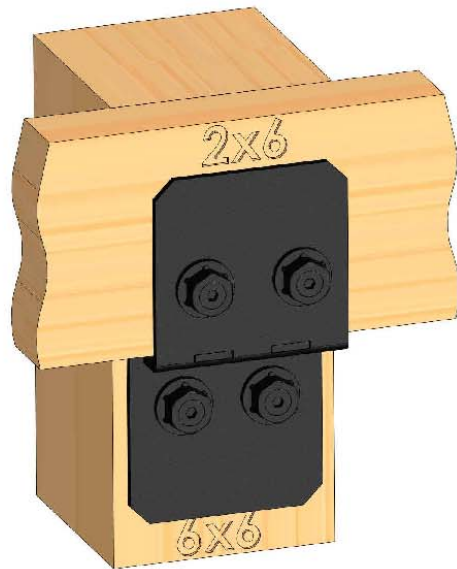
PURCHASE

CONSTRUCT

ENJOY

Laredo Sunset vs. Ironwood

2 great styles
same functionality



Ironwood
(517XX series)



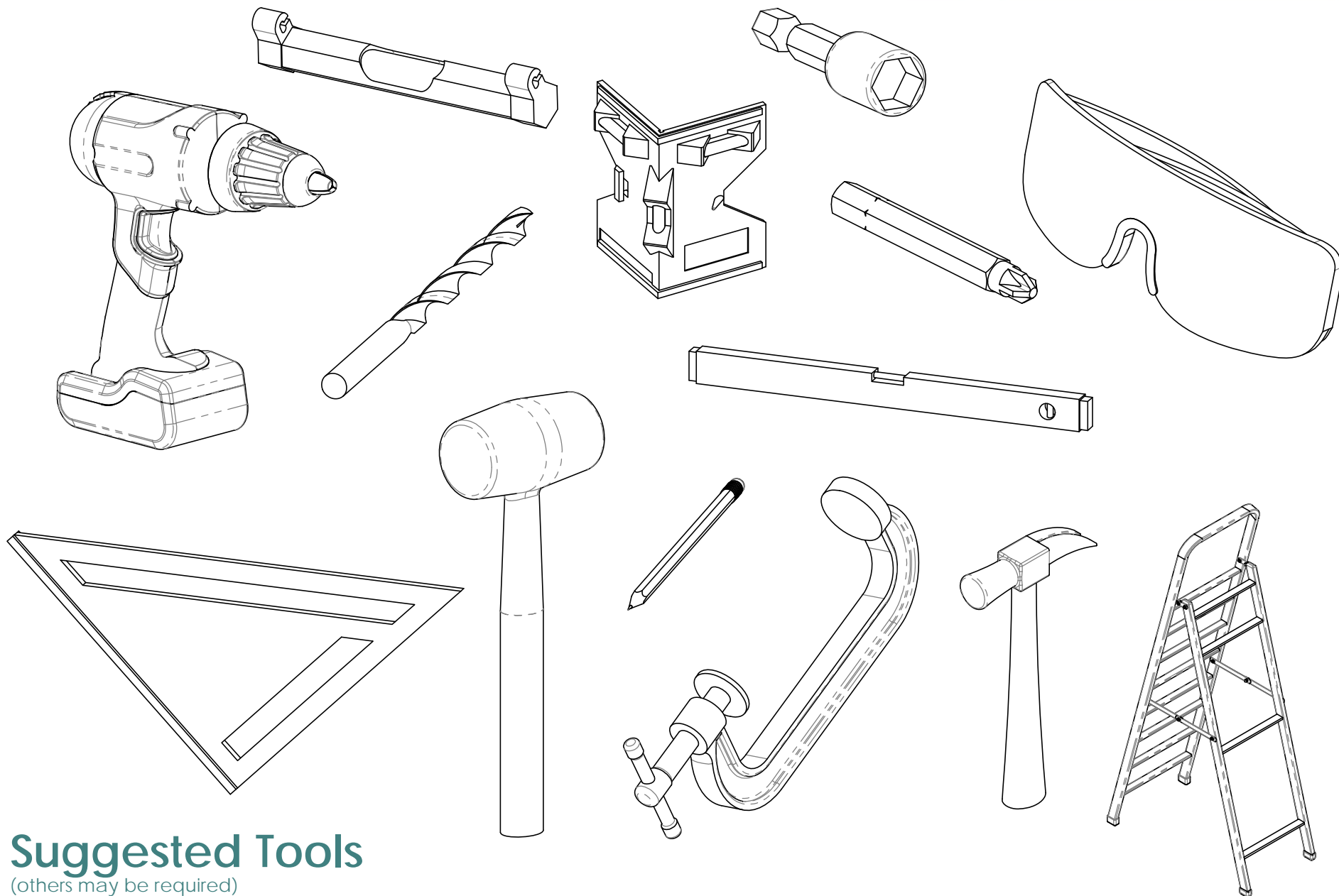
Laredo Sunset
(566XX series)

choose your connection lifestyle

both styles available for most products



OZCO BUILDING PRODUCTS

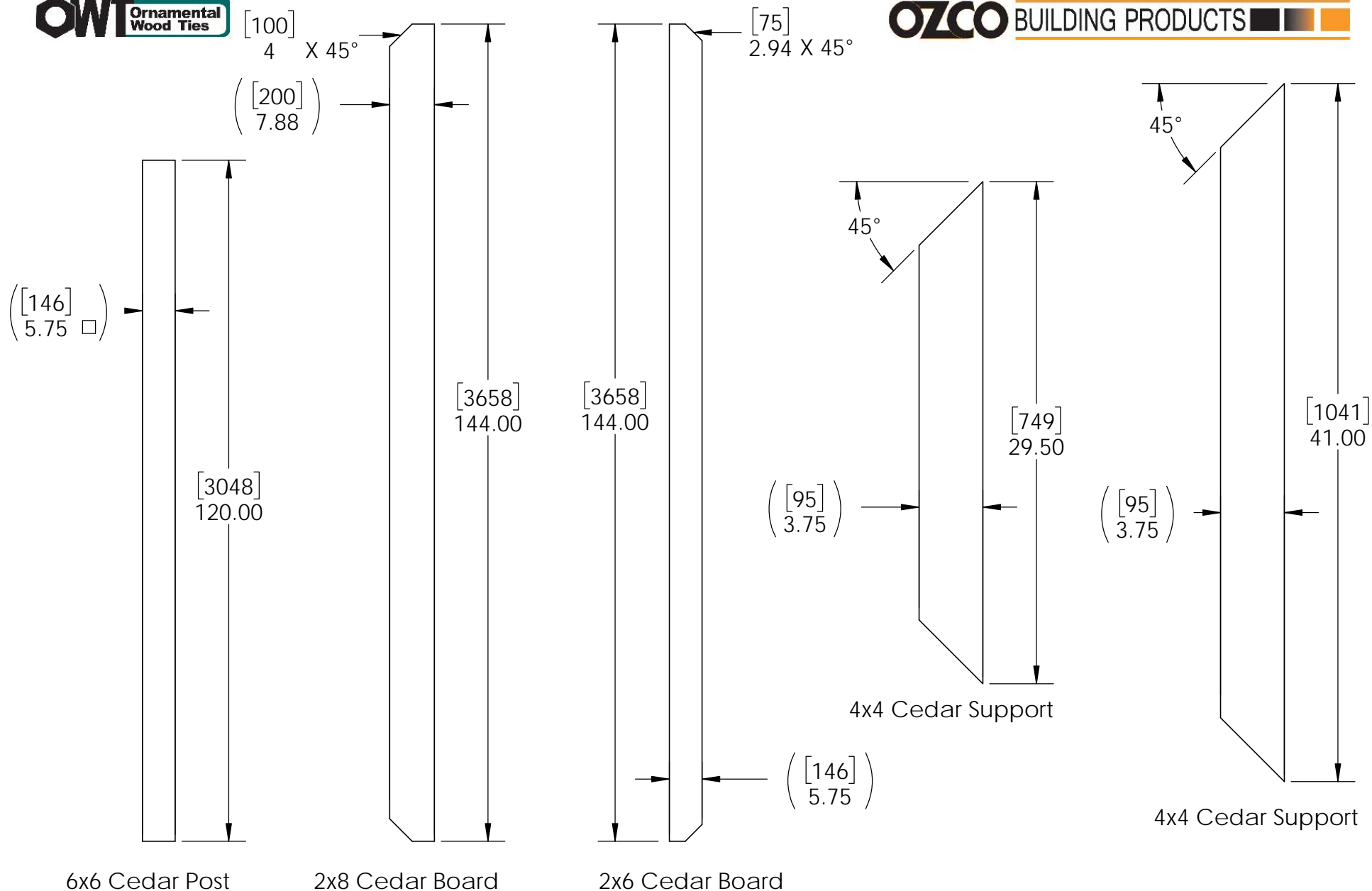


Suggested Tools

(others may be required)

OZCO Project #316 - 12x12 Pergola Double Beam

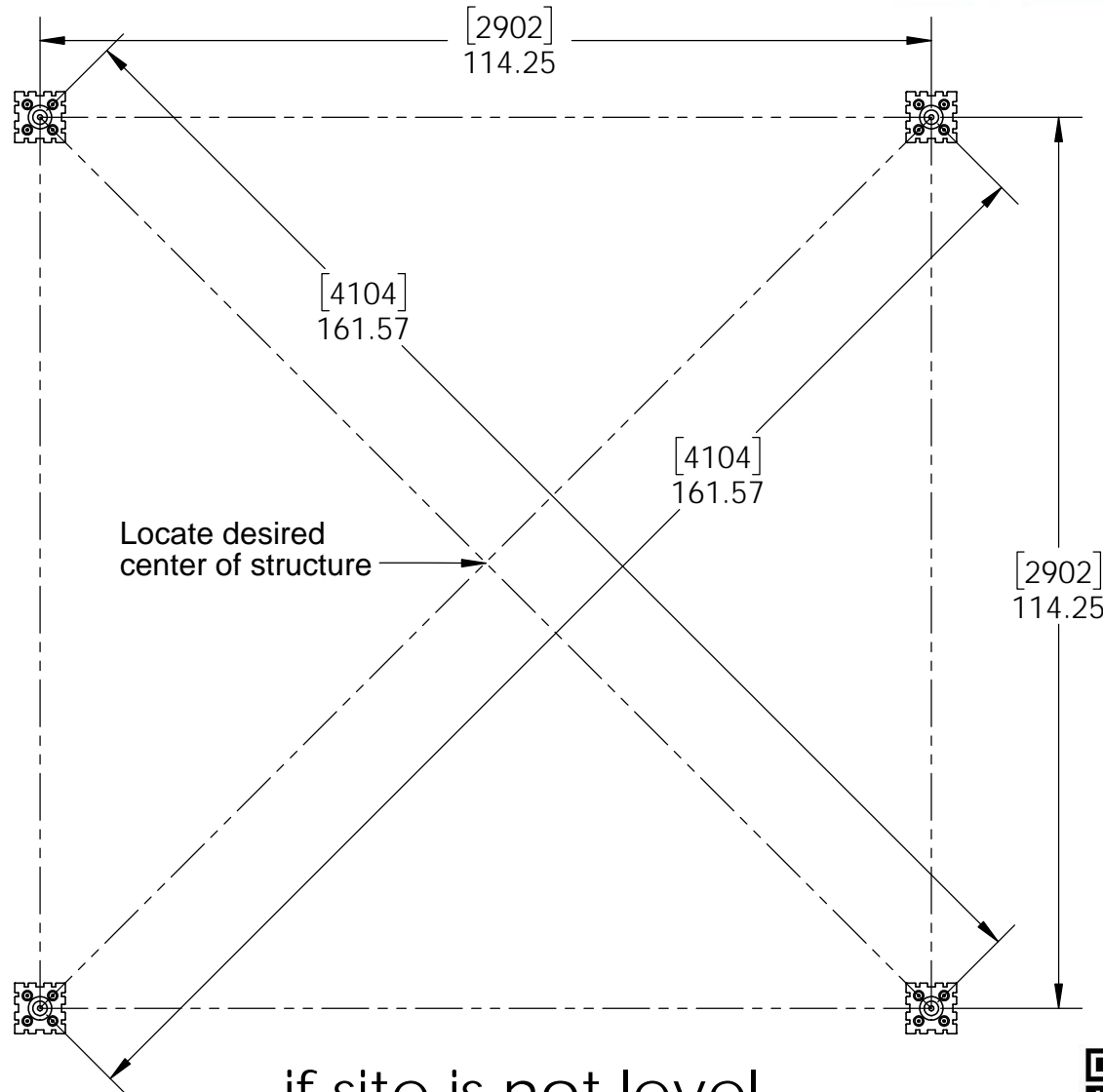
V1.00 - Installation Instructions effective May 1, 2015 and reflects information that available as of April 10, 2014. This information is updated periodically and should not be relied upon after May 1, 2015. Please visit www.OZCOBP.com to get current information



Cutlist

OZCO Project #316 - 12x12 Pergola Double Beam

V1.00 - Installation Instructions effective May 1, 2015 and reflects information that available as of April 10, 2014. This information is updated periodically and should not be relied upon after May 1, 2015. Please visit www.OZCOBP.com to get current information



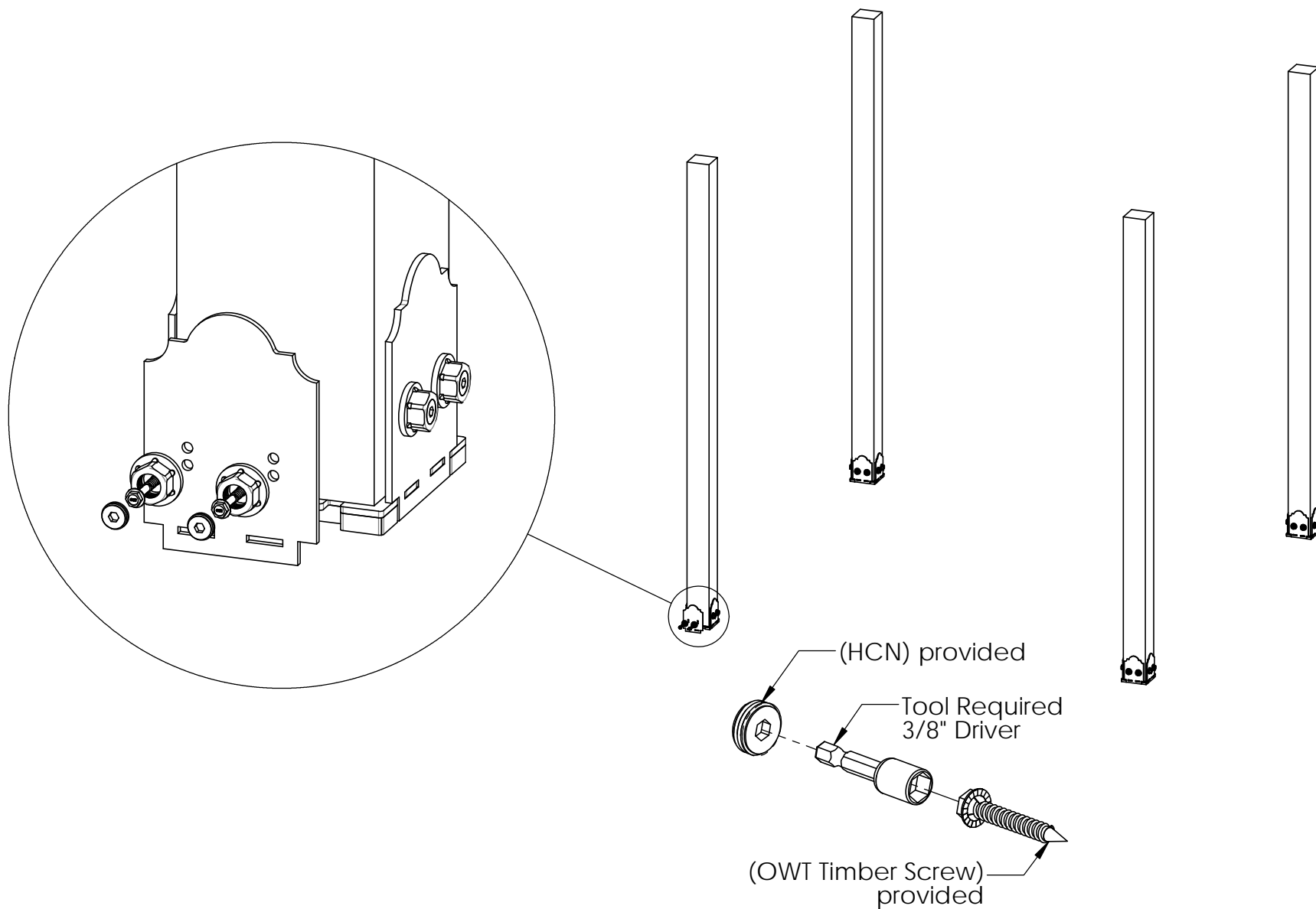
if site is not level,
see Ozco Site Leveling instruction



site

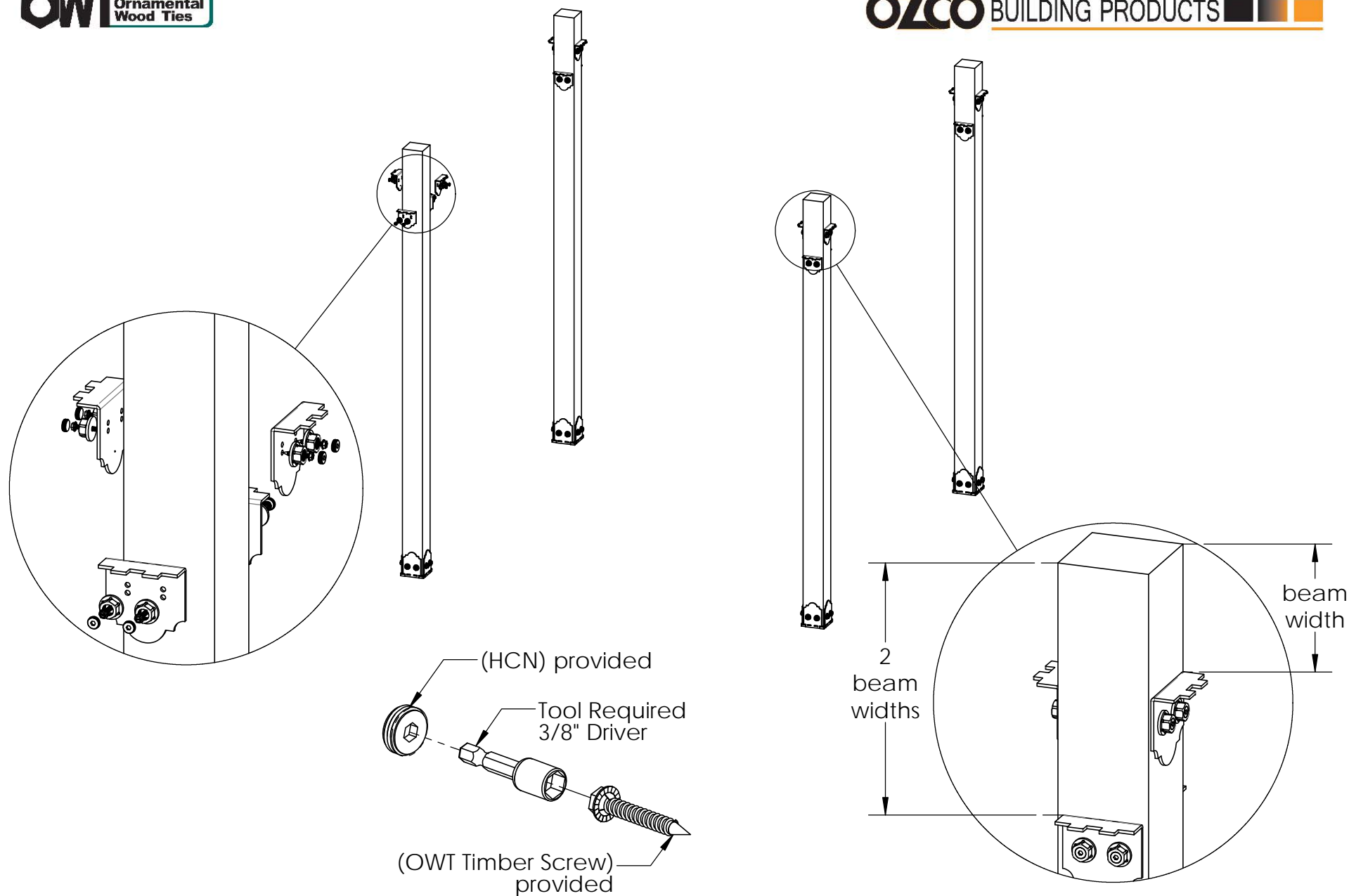
OZCO Project #316 - 12x12 Pergola Double Beam

V1.00 - Installation Instructions effective May 1, 2015 and reflects information that available as of April 10, 2014. This information is updated periodically and should not be relied upon after May 1, 2015. Please visit www.OZCOBP.com to get current information



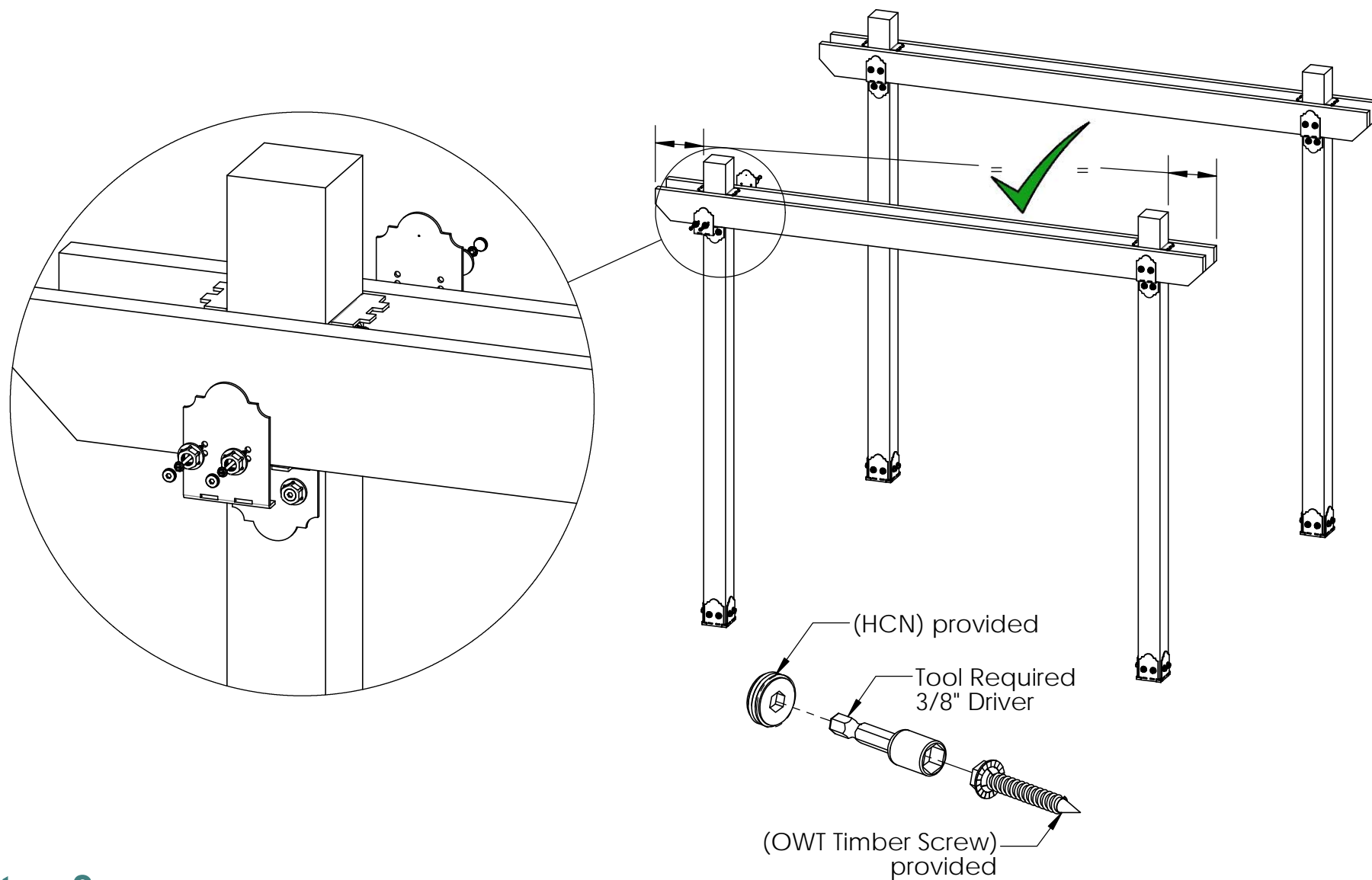
step 1

OZCO Project #316 - 12x12 Pergola Double Beam



step 2

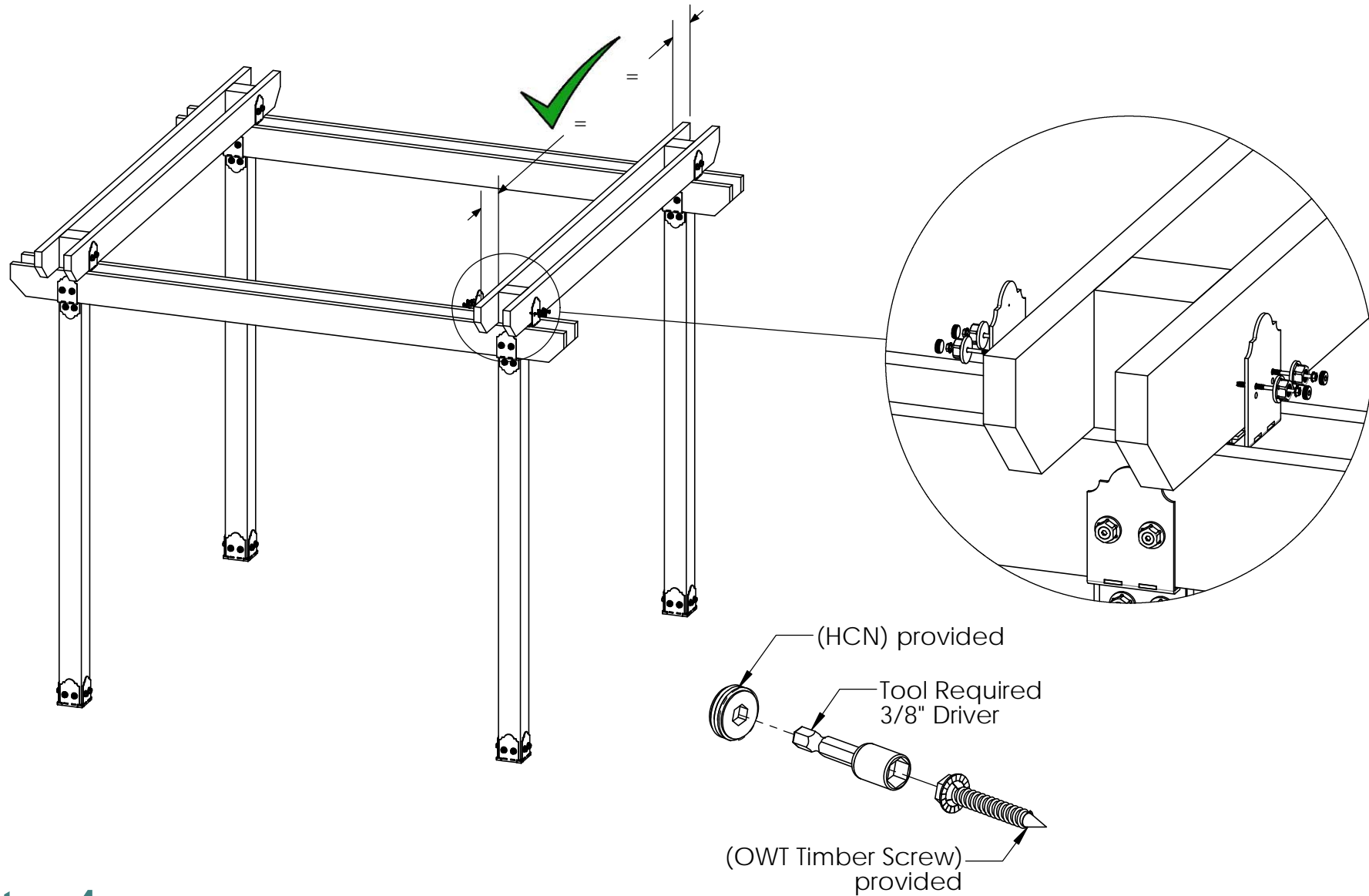
OZCO Project #316 - 12x12 Pergola Double Beam



step 3

OZCO Project #316 - 12x12 Pergola Double Beam

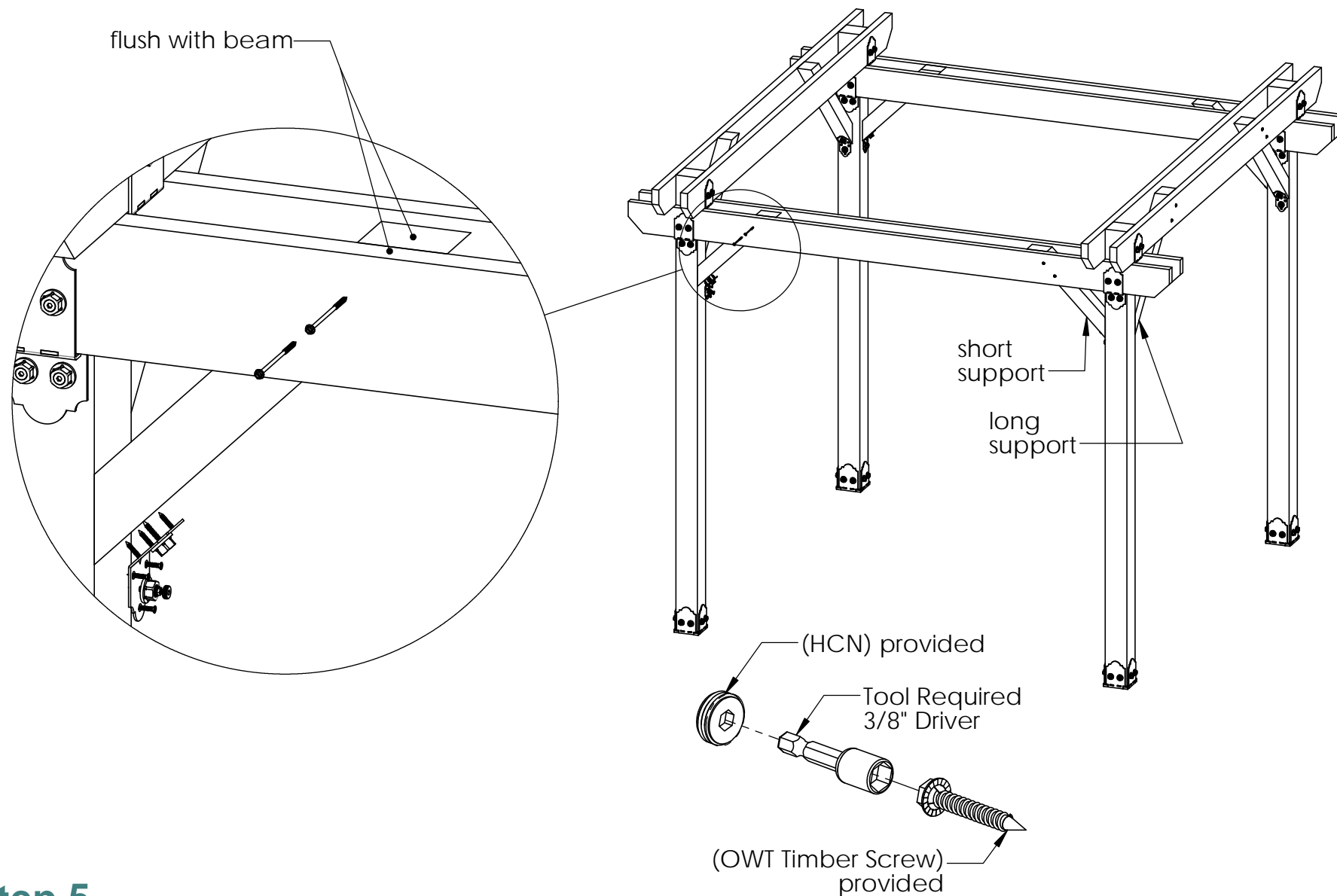
V1.00 - Installation Instructions effective May 1, 2015 and reflects information that available as of April 10, 2014. This information is updated periodically and should not be relied upon after May 1, 2015. Please visit www.OZCOBP.com to get current information



step 4

OZCO Project #316 - 12x12 Pergola Double Beam

V1.00 - Installation Instructions effective May 1, 2015 and reflects information that available as of April 10, 2014. This information is updated periodically and should not be relied upon after May 1, 2015. Please visit www.OZCOBP.com to get current information

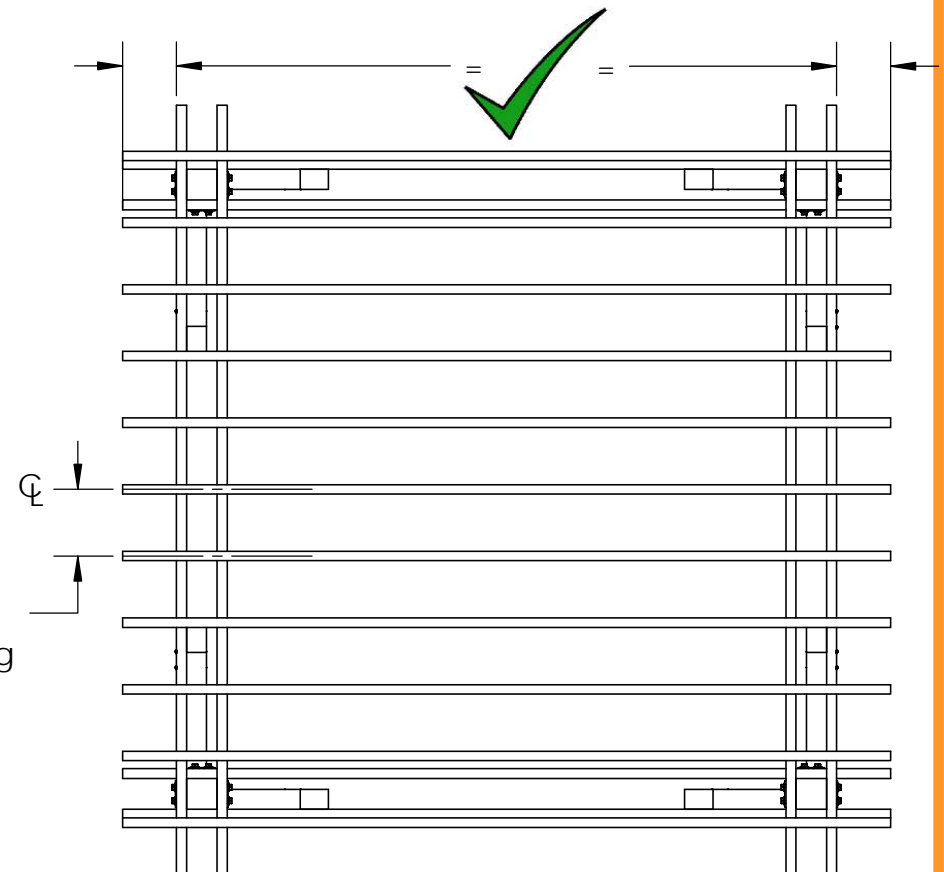
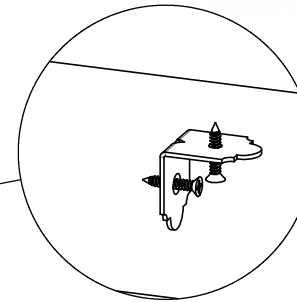
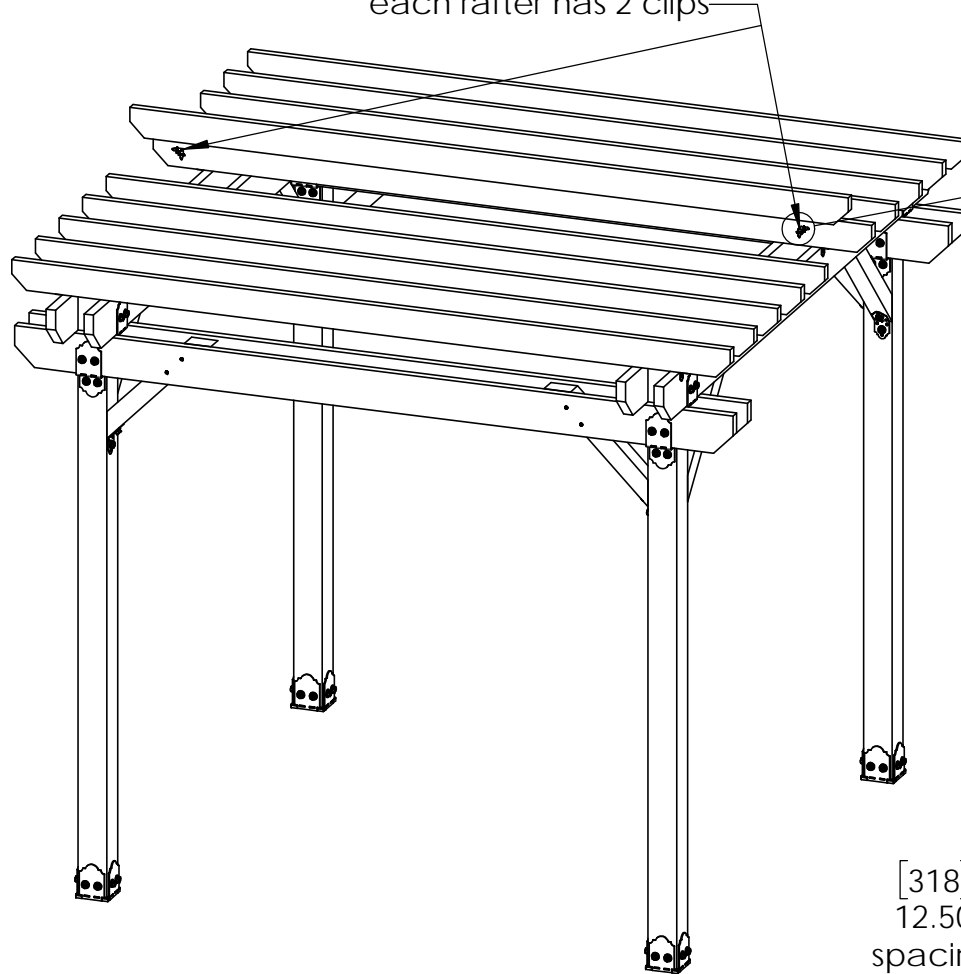


step 5

OZCO Project #316 - 12x12 Pergola Double Beam

V1.00 - Installation Instructions effective May 1, 2015 and reflects information that available as of April 10, 2014. This information is updated periodically and should not be relied upon after May 1, 2015. Please visit www.OZCOBP.com to get current information

install on both ends
each rafter has 2 clips



step 6

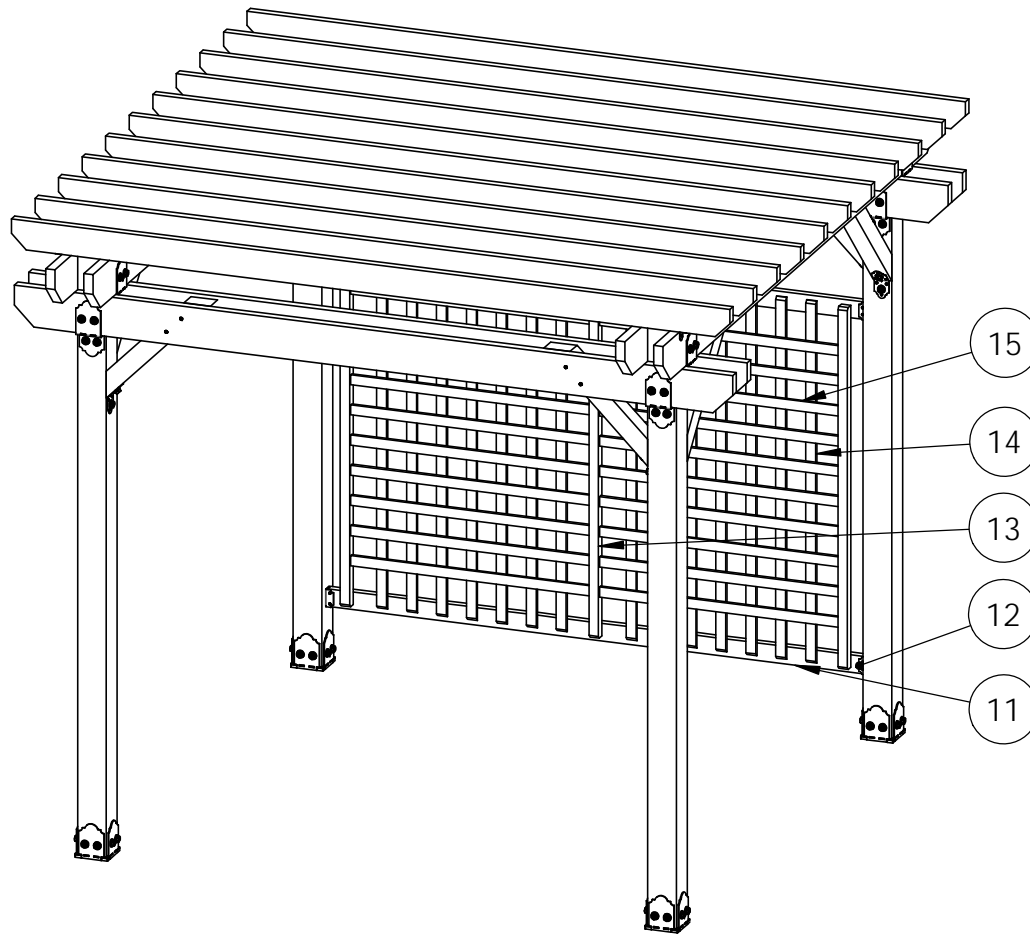
OZCO Project #316 - 12x12 Pergola Double Beam



Lattice option

OZCO Project #316 - 12x12 Pergola Double Beam

V1.00 - Installation Instructions effective May 1, 2015 and reflects information that available as of April 10, 2014. This information is updated periodically and should not be relied upon after May 1, 2015. Please visit www.OZCOBP.com to get current information

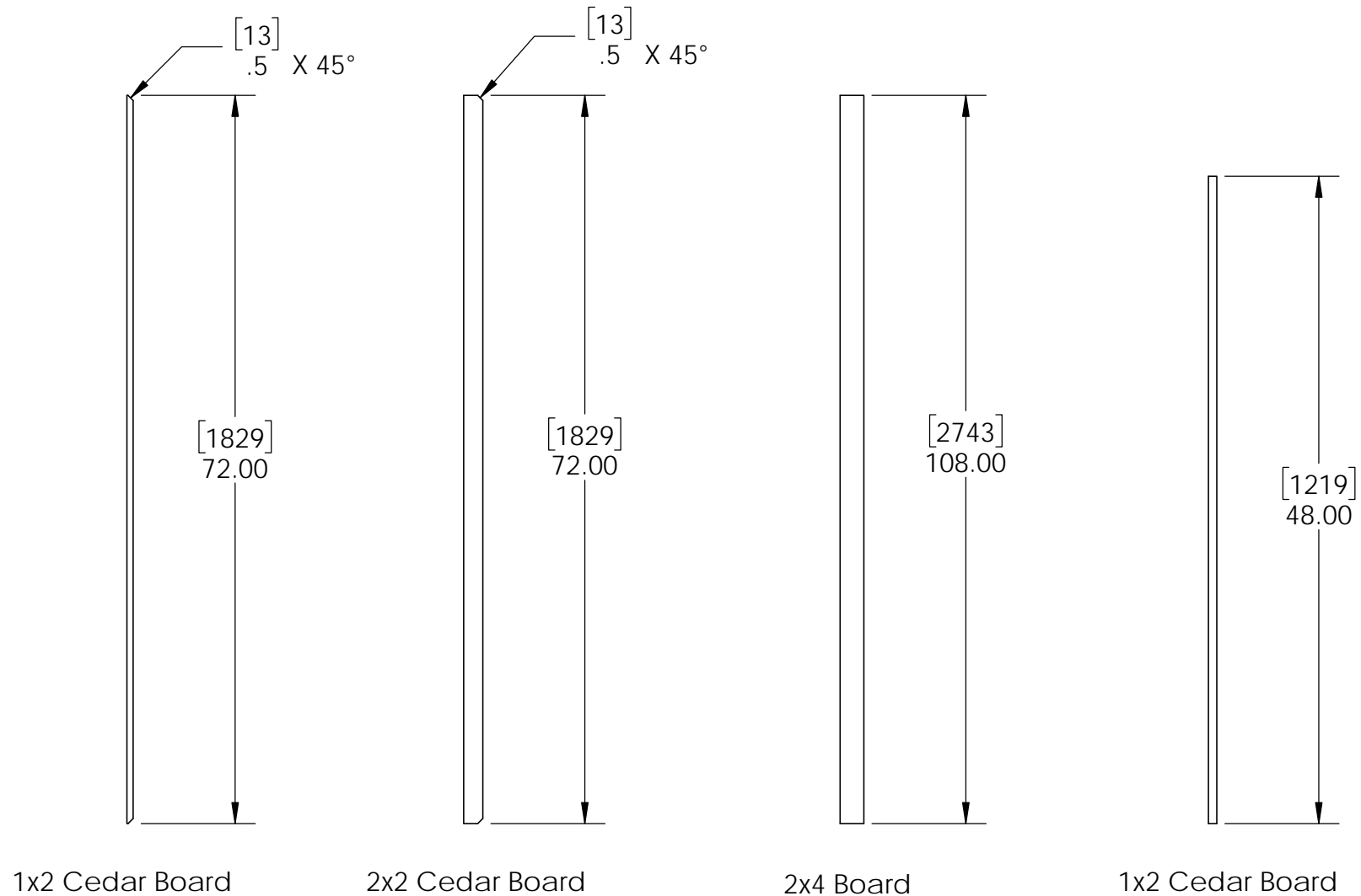


ITEM NO.	QTY.	PART NUMBER	DESCRIPTION
11	2	2x4 Board	2x4x108.00
12	3	2x2 Cedar Board	2x2x72.00
13	14	1x2 Cedar Board	1x2x72.00
14	20	1x2 Cedar Board	1x2x48.00
15	2	56641	2x4 Top Rail Saddle (2x4-TR)

Bill of Material-Lattice option

OZCO Project #316 - 12x12 Pergola Double Beam

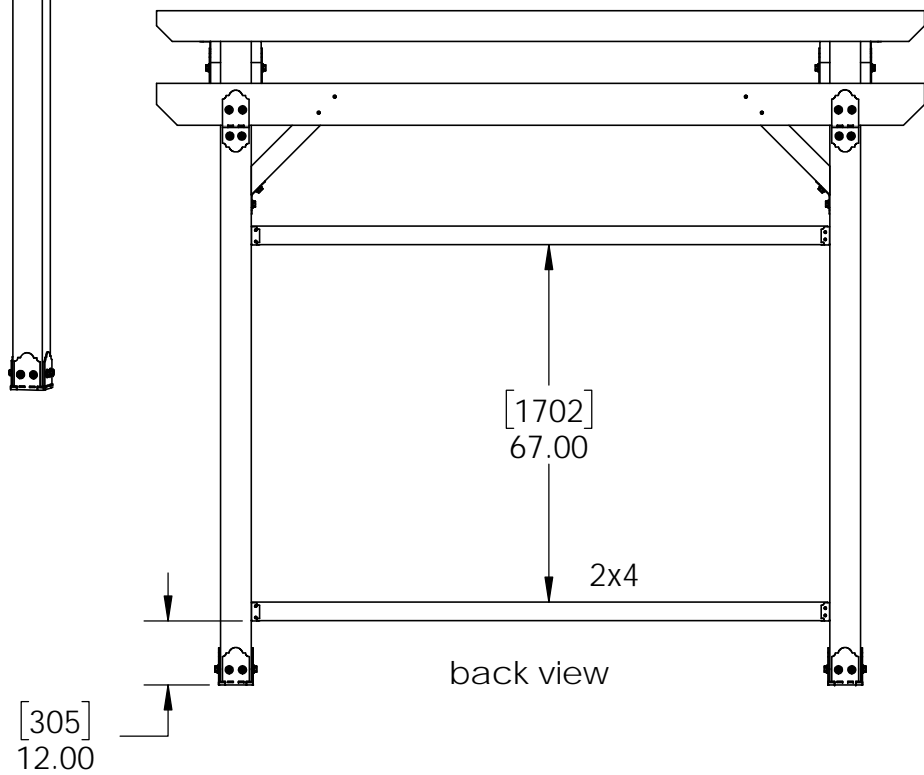
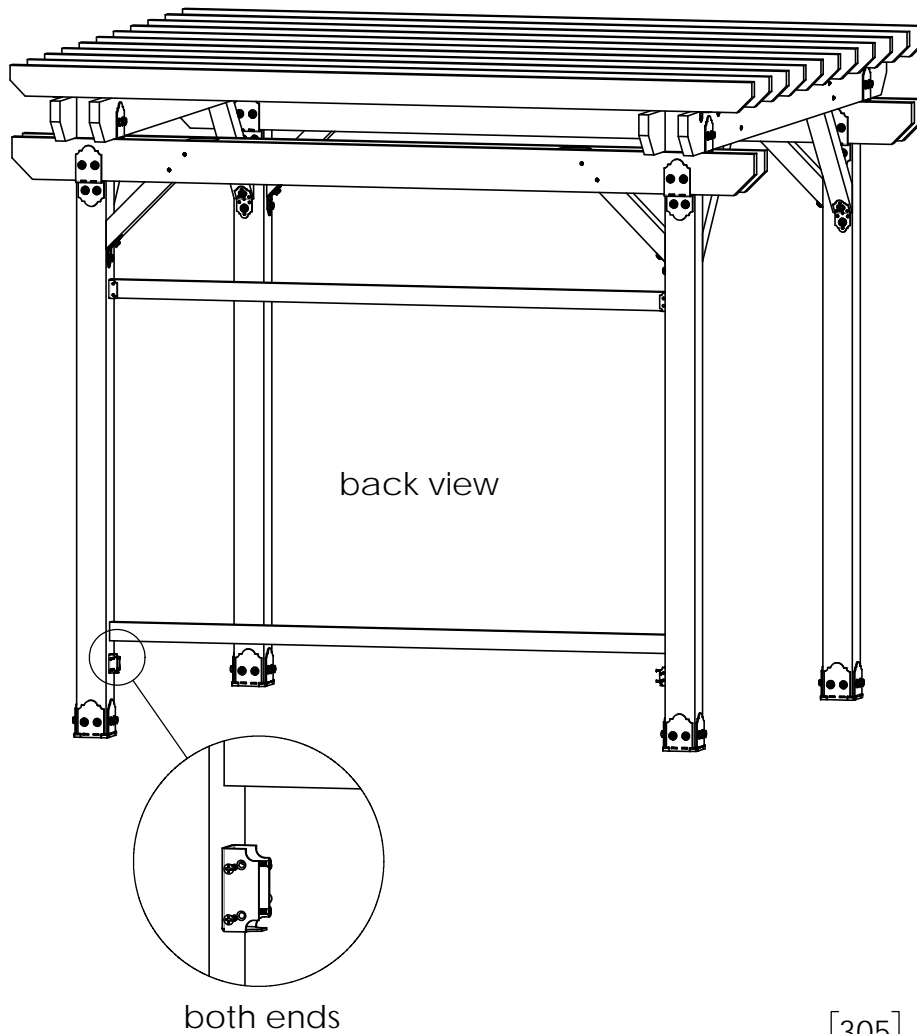
V1.00 - Installation Instructions effective May 1, 2015 and reflects information that available as of April 10, 2014. This information is updated periodically and should not be relied upon after May 1, 2015. Please visit www.OZCOBP.com to get current information



Cutlist-Lattice option

OZCO Project #316 - 12x12 Pergola Double Beam

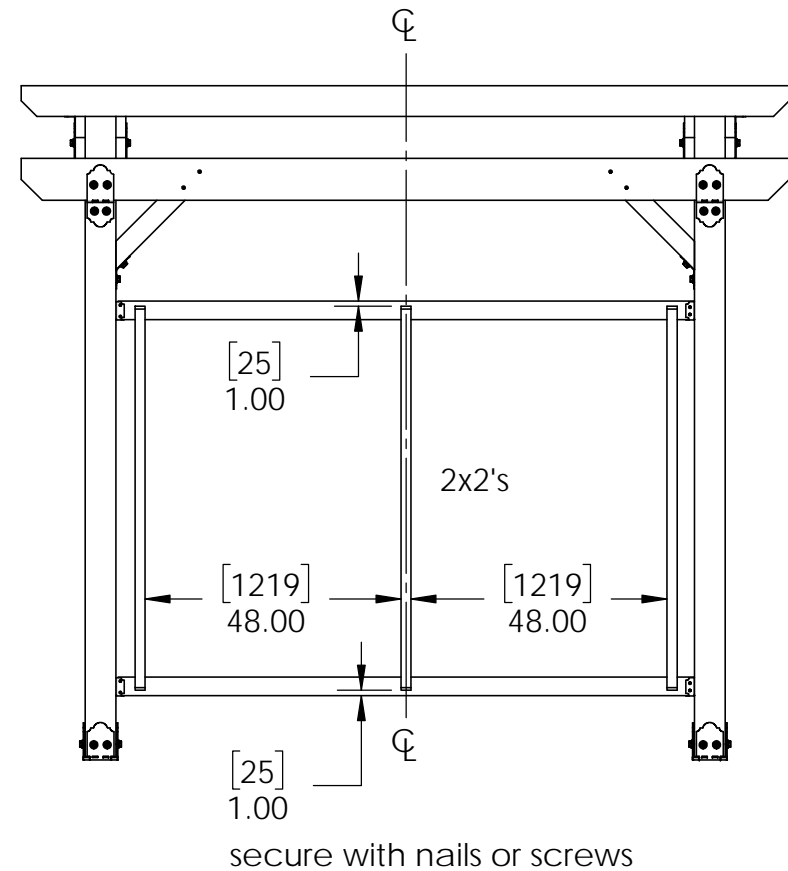
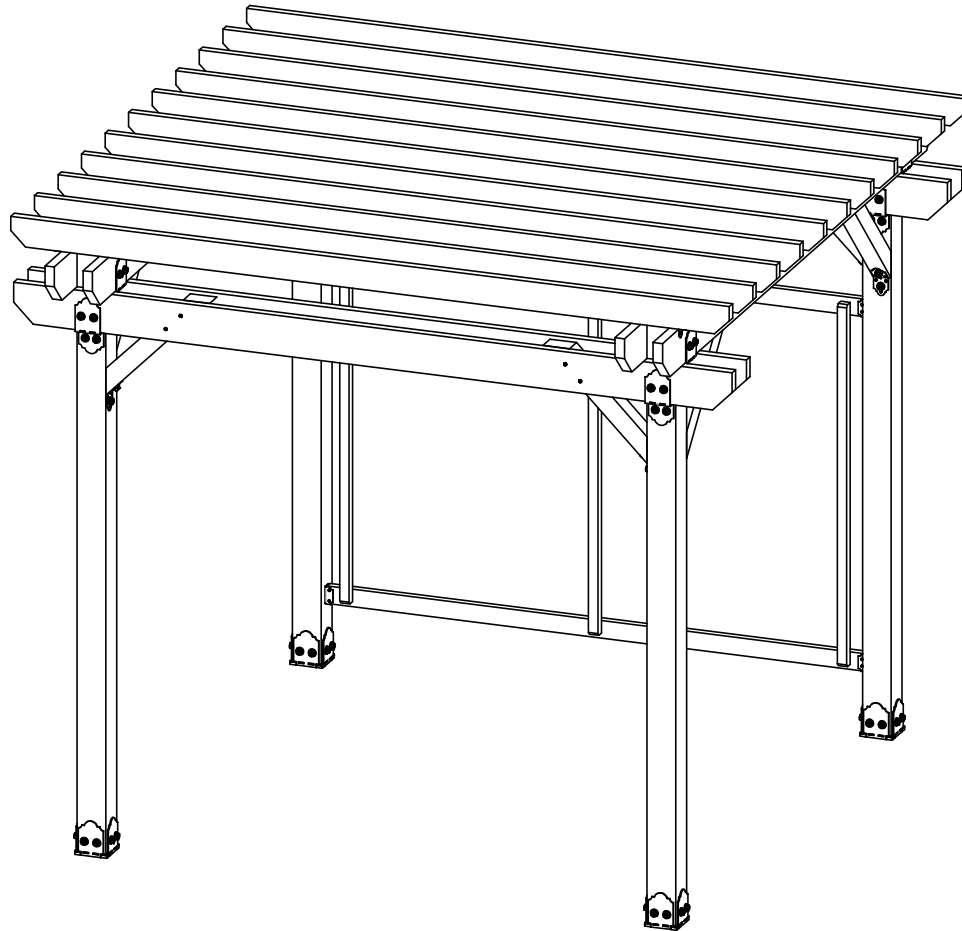
V1.00 - Installation Instructions effective May 1, 2015 and reflects information that available as of April 10, 2014. This information is updated periodically and should not be relied upon after May 1, 2015. Please visit www.OZCOBP.com to get current information



Lattice step 1

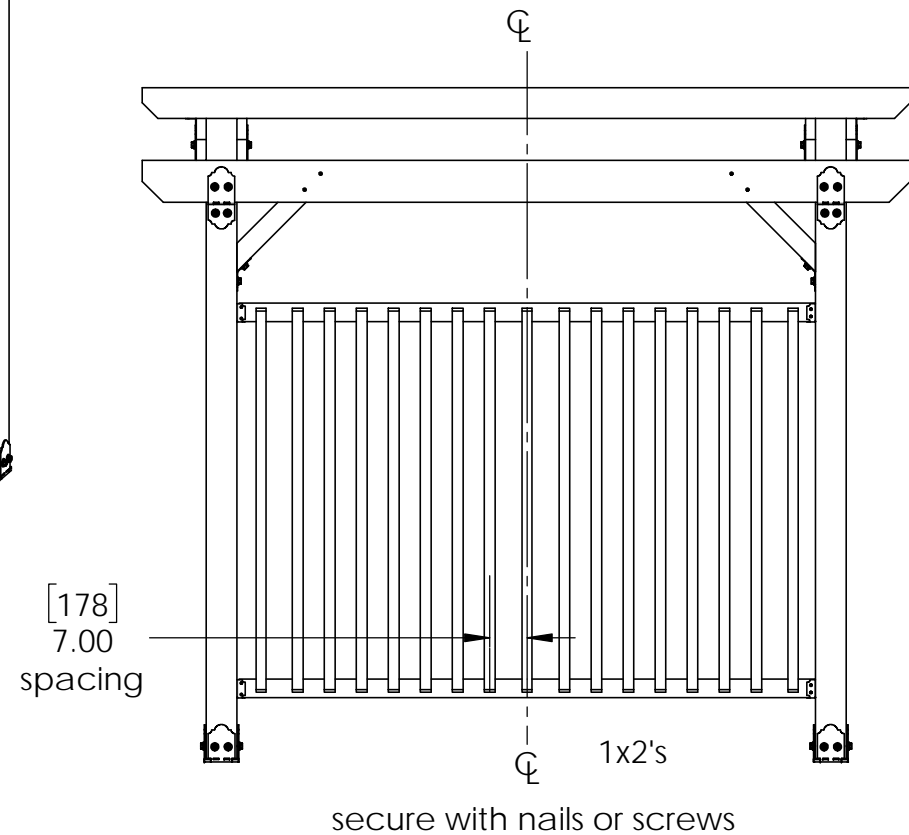
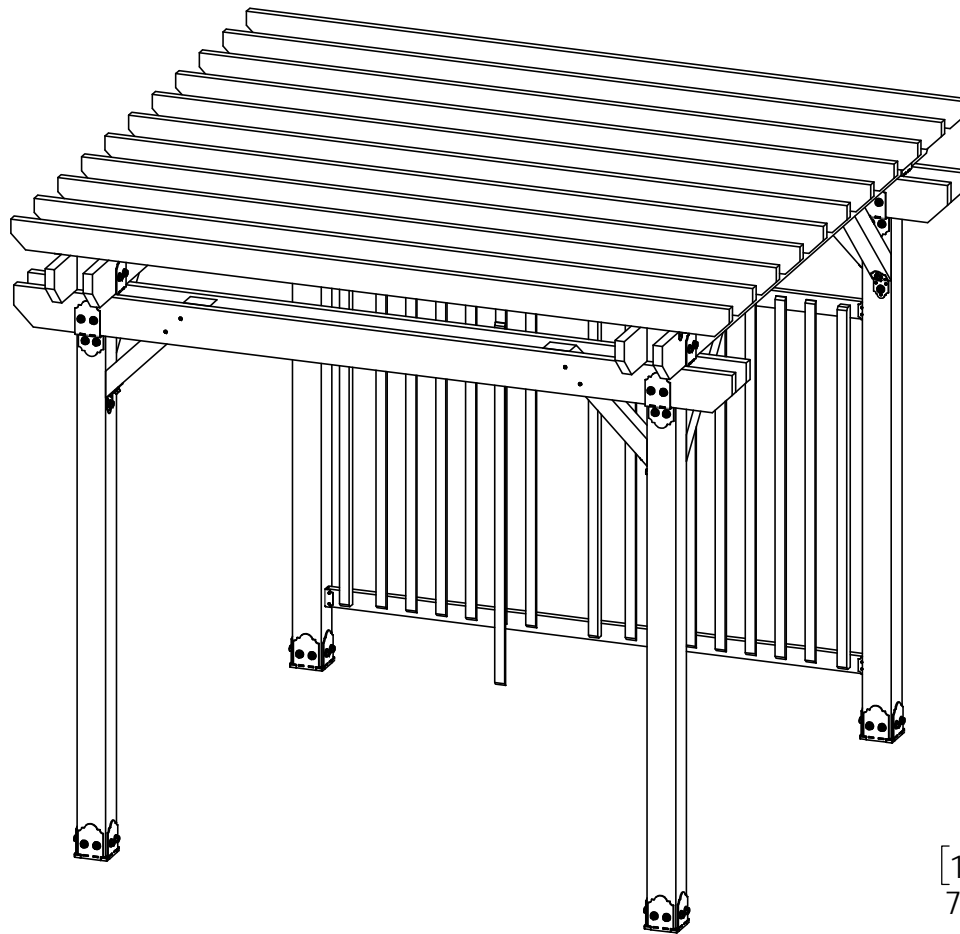
OZCO Project #316 - 12x12 Pergola Double Beam

V1.00 - Installation Instructions effective May 1, 2015 and reflects information that available as of April 10, 2014. This information is updated periodically and should not be relied upon after May 1, 2015. Please visit www.OZCOBP.com to get current information



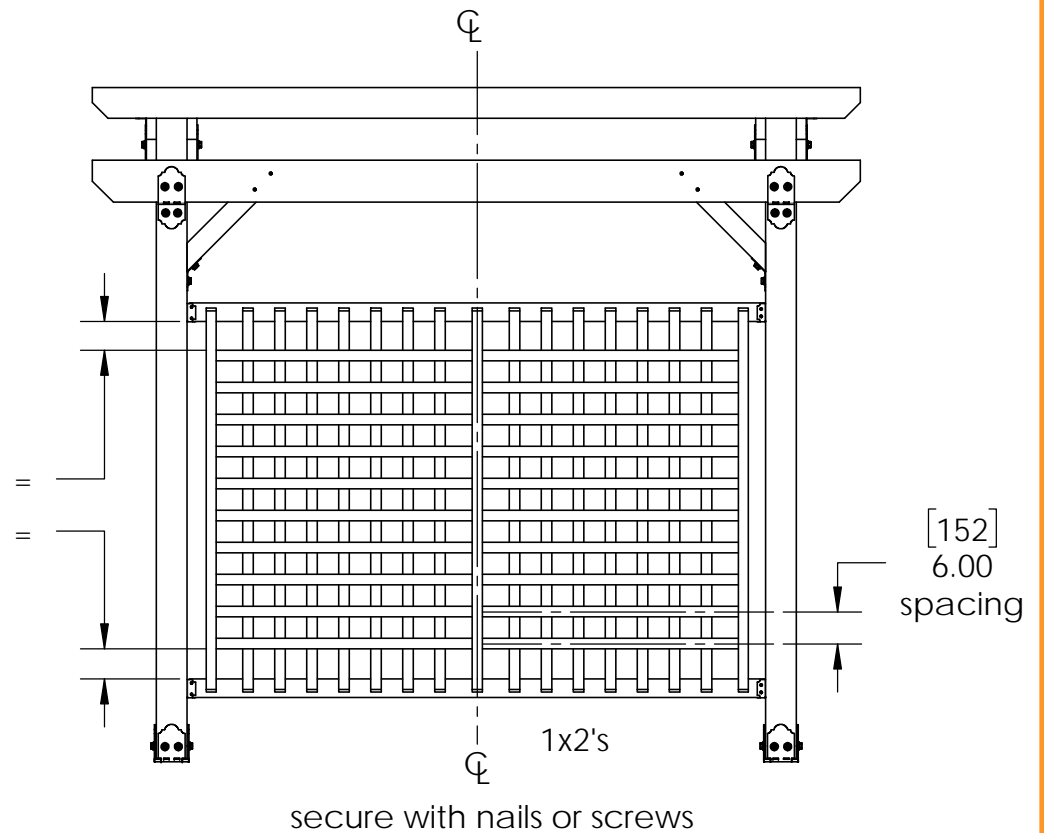
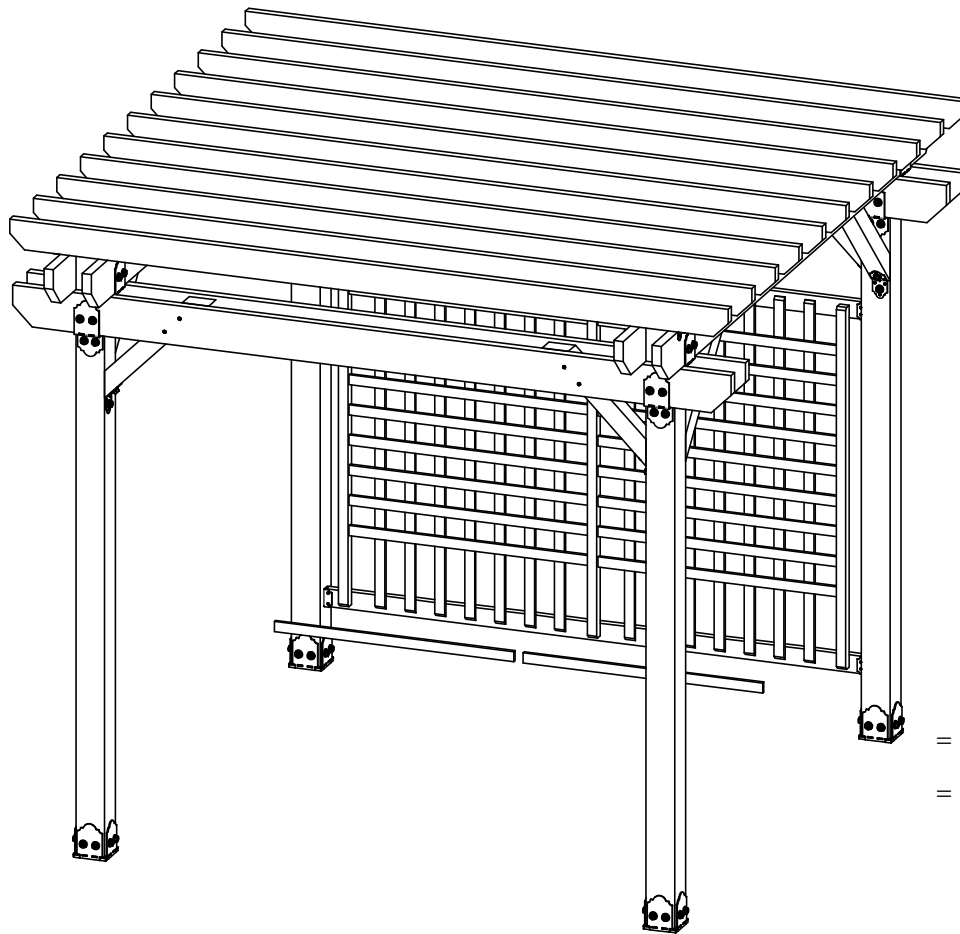
Lattice step 2

OZCO Project #316 - 12x12 Pergola Double Beam



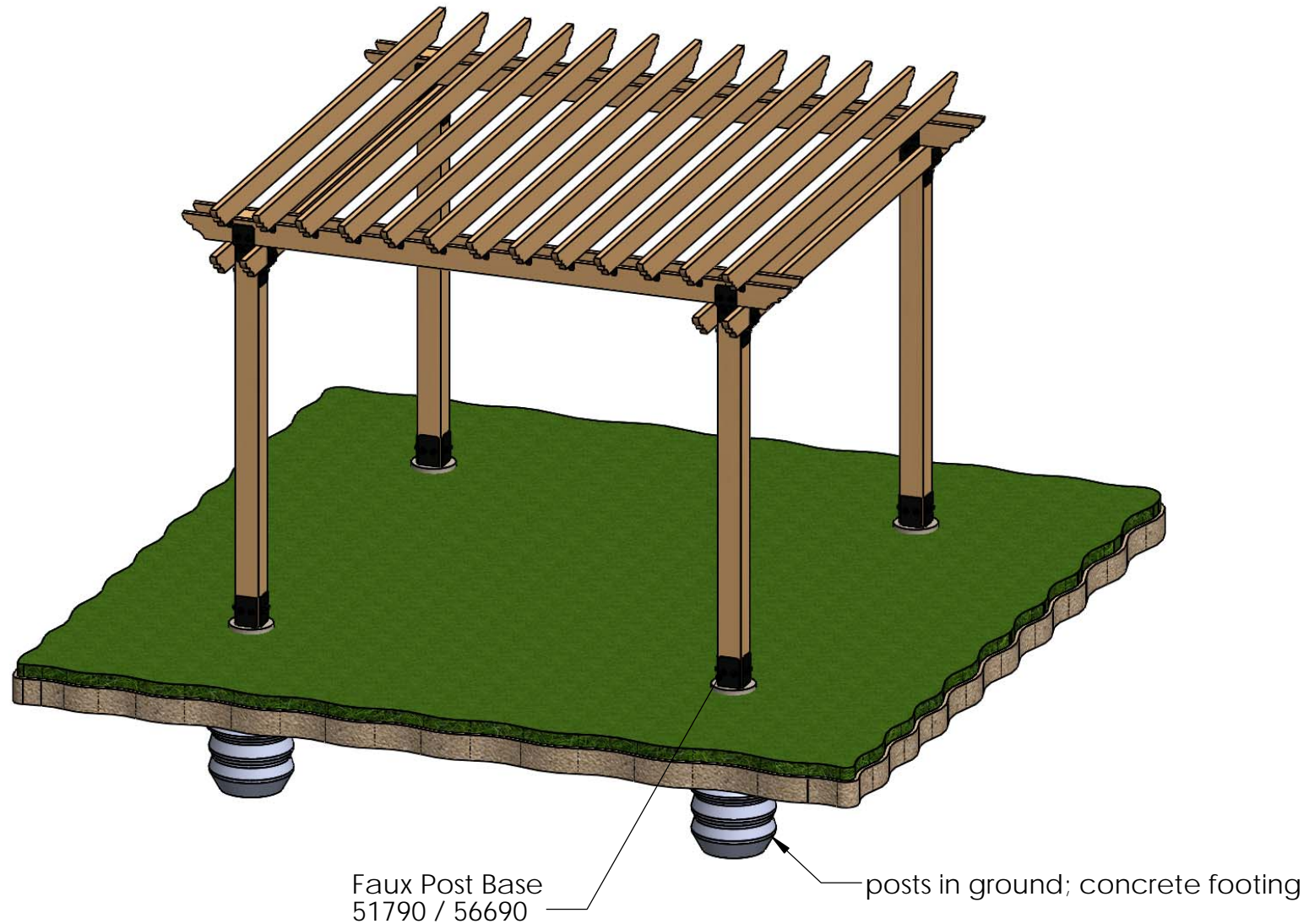
Lattice step 3

OZCO Project #316 - 12x12 Pergola Double Beam



Lattice step 4

OZCO Project #316 - 12x12 Pergola Double Beam



Idea's-Ground mounted with Faux Post Base in Ironwood Style

OZCO Project #316 - 12x12 Pergola Double
Beam

V2.00 - Installation Instructions, Specifications and Project Plans are effective May 1, 2015 and reflects information that available as of April 10, 2014. This information is updated periodically and should not be relied upon after October 15, 2016. Please visit www.OZCOBP.com to get current information.