

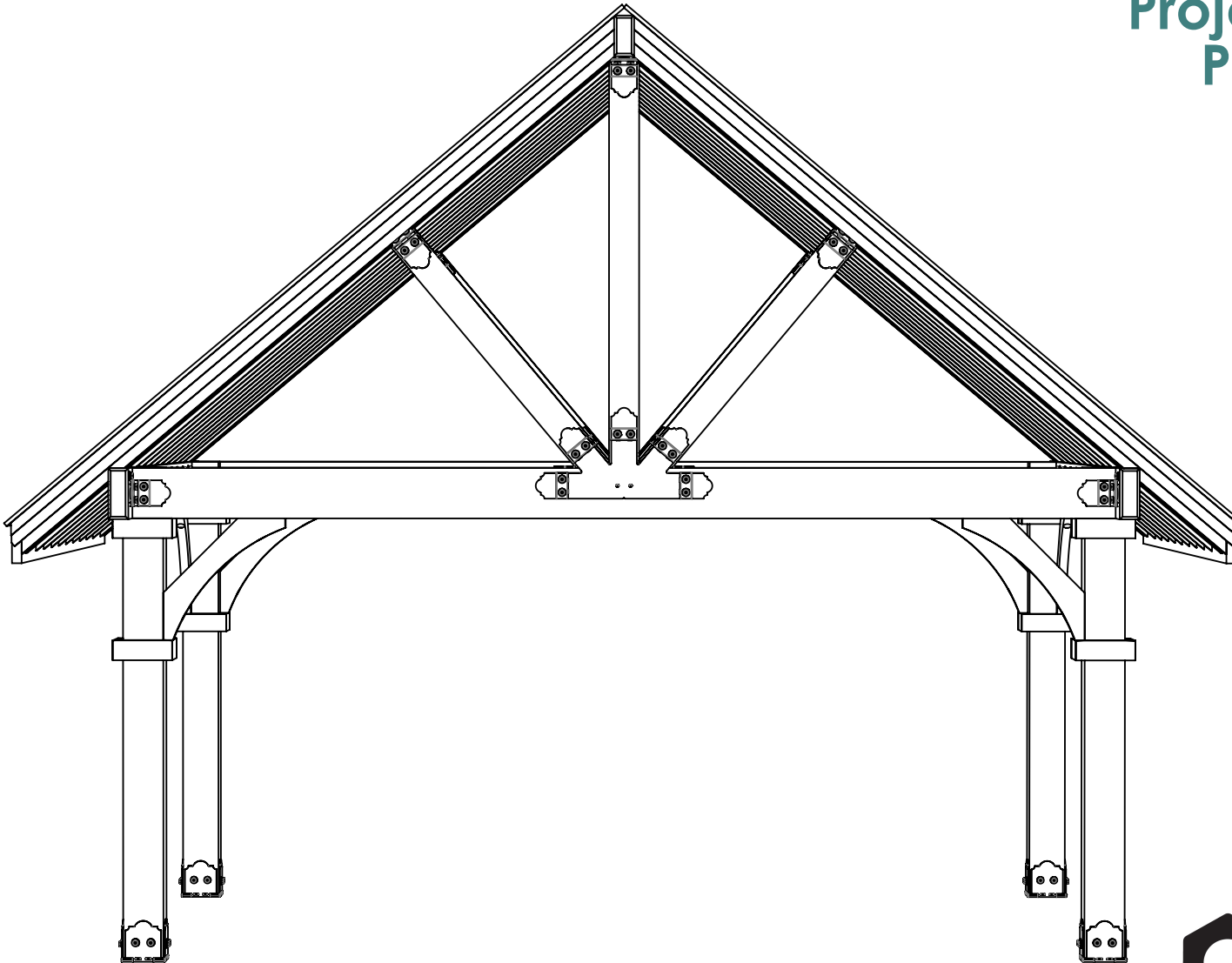
DESIGN

PURCHASE

CONSTRUCT

ENJOY

Project 212 Pavilion Post and Beam – Free Standing

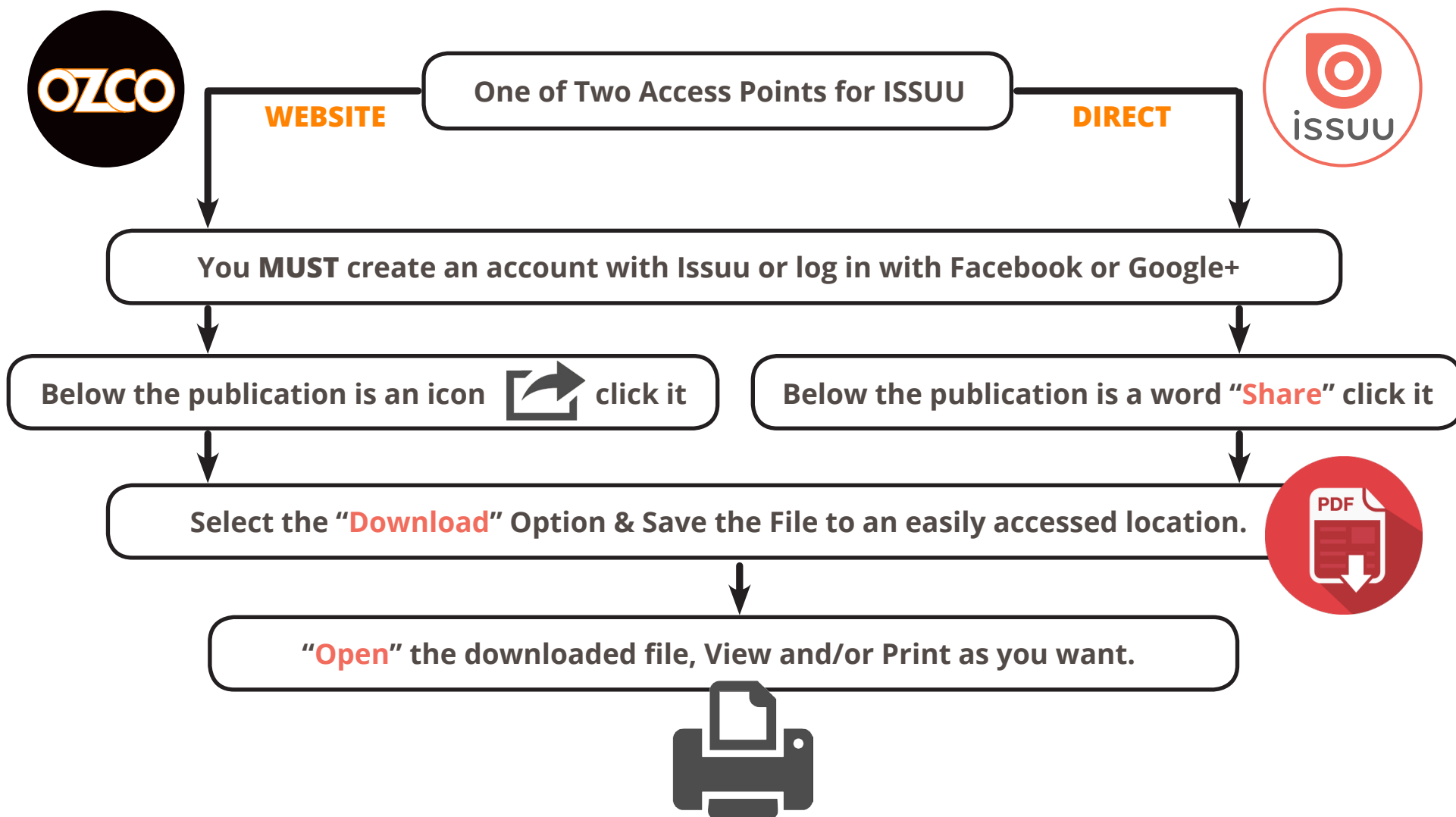


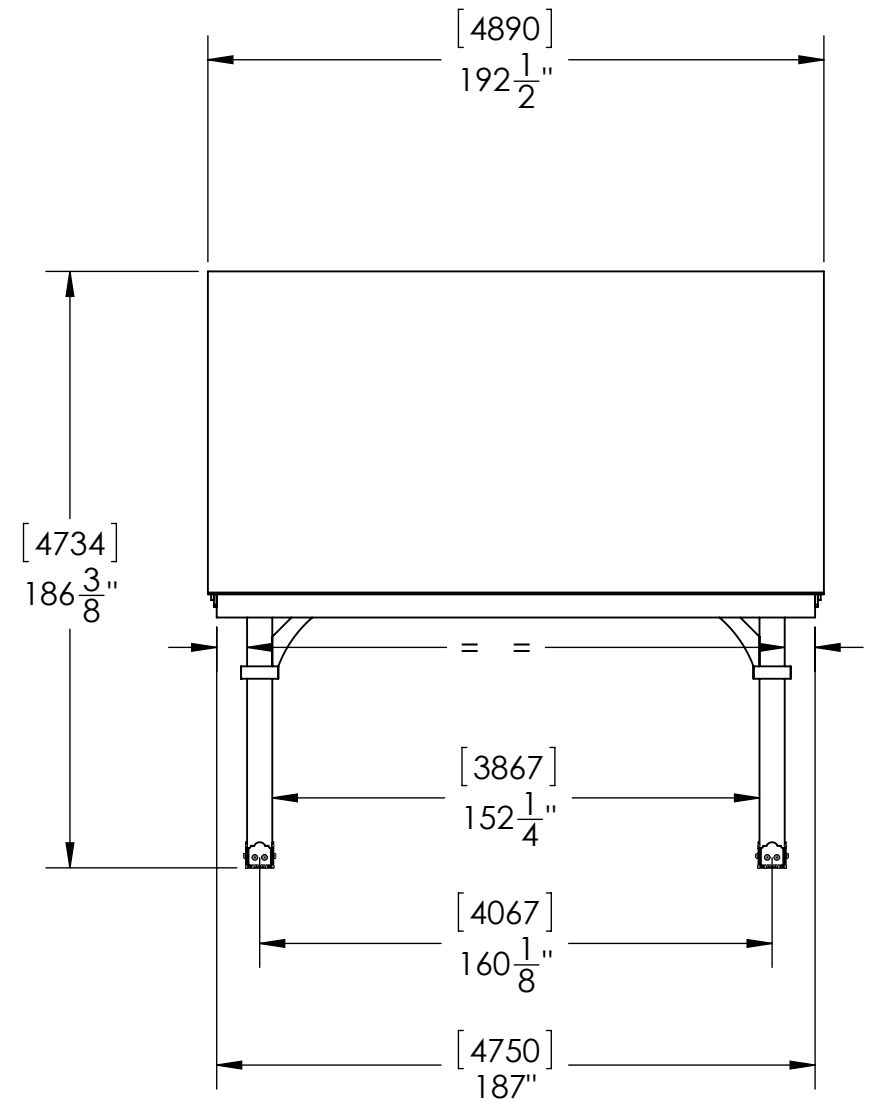
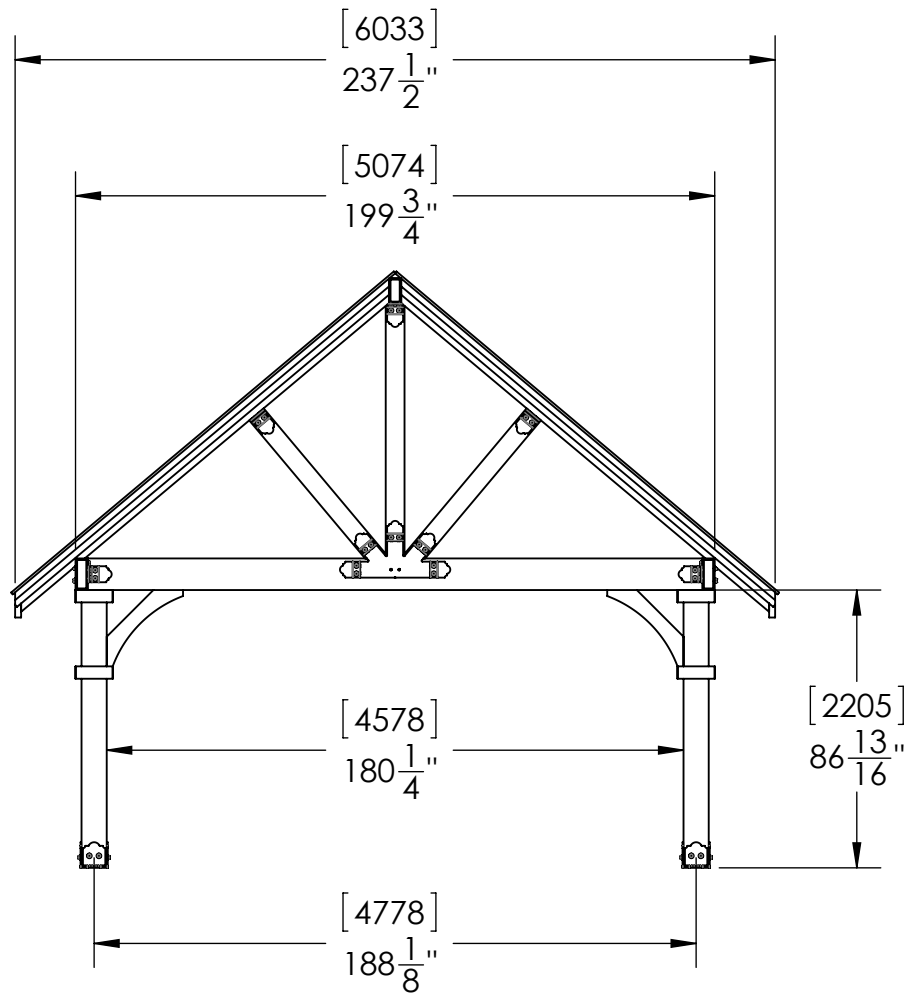
OZCO BUILDING PRODUCTS



Printing Documents from ISSUU

Unfortunately, there is currently no way to print content directly through issuu. To print a publication, you will need to download it and print it from your computer.

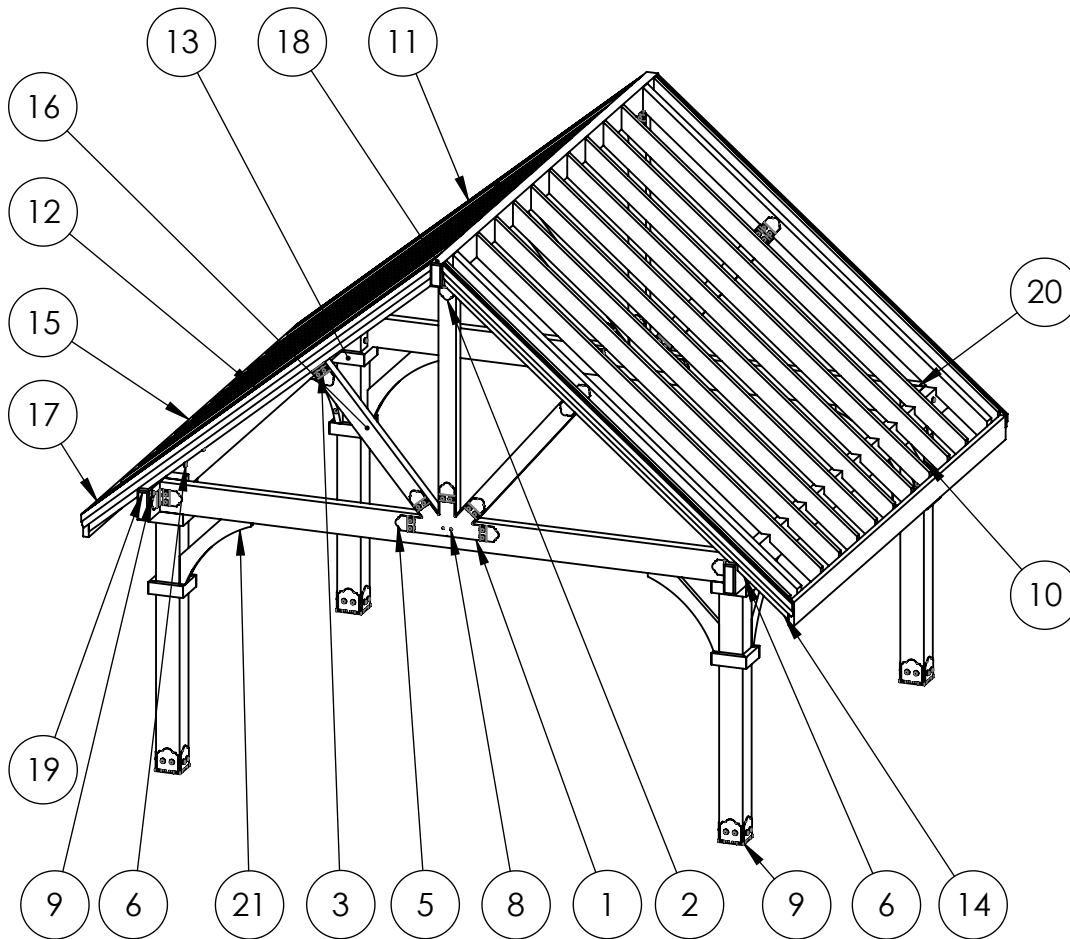




Overview

Project 212 Pavilion Post and Beam – Free Standing

V1.00 - Installation Instructions effective May 1, 2015 and reflects information that available as of April 10, 2014. This information is updated periodically and should not be relied upon after May 1, 2015. Please visit www.OZCOBP.com to get current information

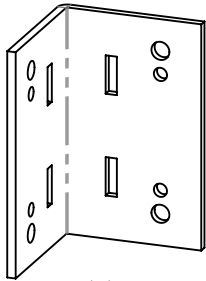


Bill of Material

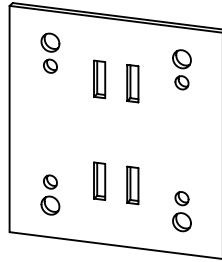
(shown without roof for clarity)

Project 212 Pavilion Post and Beam – Free Standing

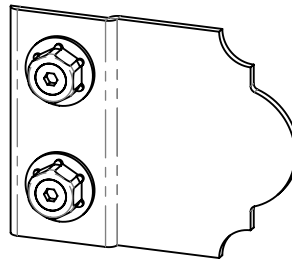
| ITEM NO. | QTY. | PART NUMBER | DESCRIPTION |
|----------|------|------------------|----------------------------------|
| 1 | 4 | 56620 | 10:12 Truss Base Fan |
| 2 | 4 | 56615 | Flush Inside 90 |
| 3 | 4 | 56613 | Butt Joint Flush |
| 4 | 26 | 56611 | Truss Accent |
| 5 | 4 | 56651 | Assembly, OWT Timber Bolt 8-10" |
| 6 | 2 | 56629 | Screw, OWT 7-1/2" (190mm) Timber |
| 7 | 5 | 56625 | Screw, OWT 1-3/4" (45mm) Timber |
| 8 | 4 | 56621 | Hex Cap Nut |
| 9 | 4 | 56609 | Assembly, 8x8 Post Base |
| 10 | 4 | 8x8 Cedar Post | 8x8x96" |
| 11 | 4 | 1x2 Cedar Board | 1x2x192" |
| 12 | 4 | 1x4 Cedar Board | 1x4x192" |
| 13 | 32 | 2x4 Cedar Board | 2x4x12" |
| 14 | 22 | 2x6 Cedar Board | 2x6x192" |
| 15 | 2 | 2x8 Cedar Board | 2x8x16 |
| 16 | 6 | 4x6 Cedar Board | 4x6x96" |
| 17 | 4 | 4x6 Cedar Board | 4x6x192" |
| 18 | 1 | 4x8 Cedar Board | 4x6x192" |
| 19 | 2 | 4x10 Cedar Board | 4x10x192" |
| 20 | 2 | 4x10 Cedar Board | 4x10x192" |
| 21 | 8 | 2x8 Cedar Board | 2x8x4 |



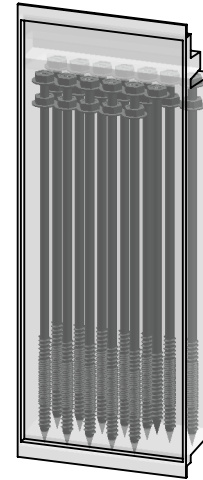
56615
(2 pack)



56613
(2 pack)



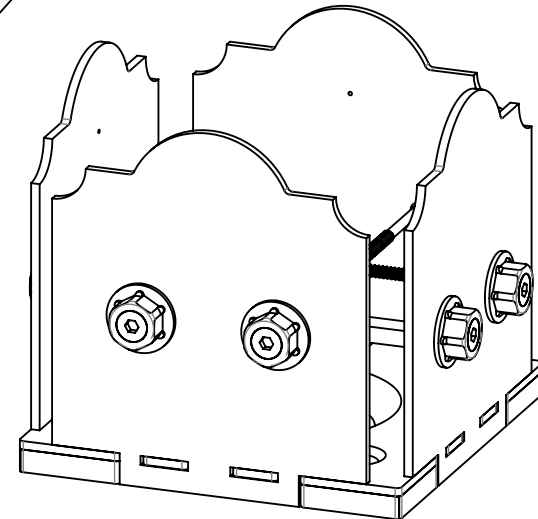
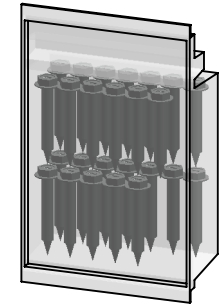
56611
(2 pack)



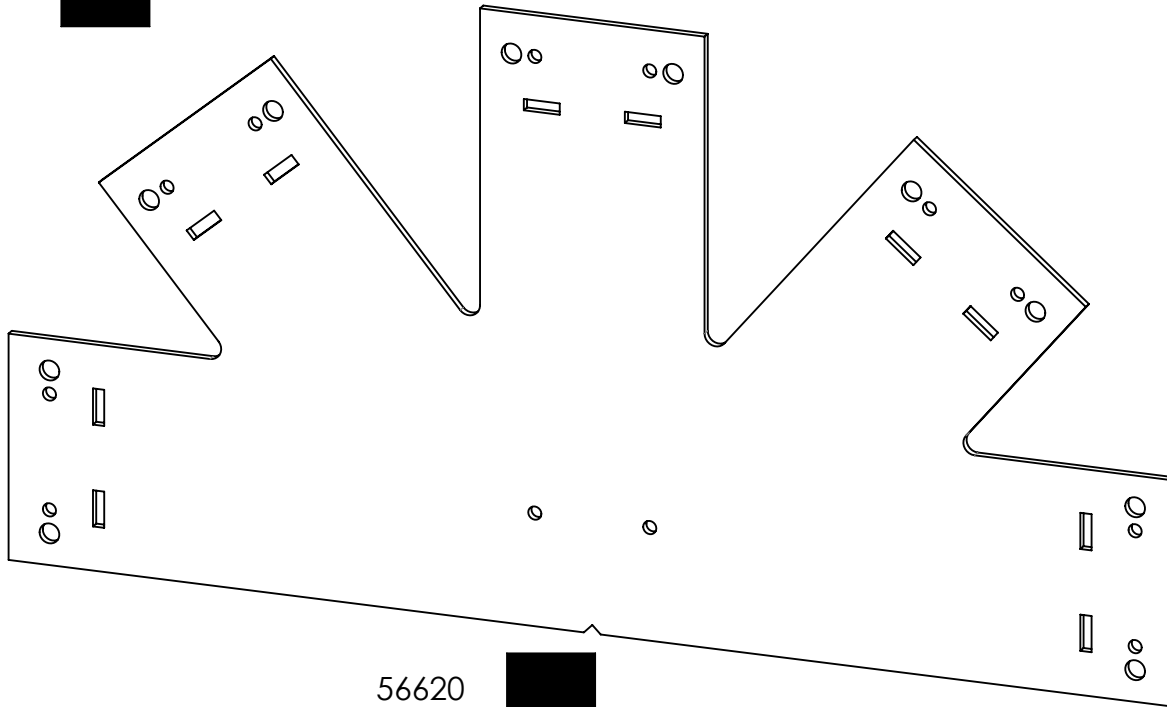
56629
(25 pack)



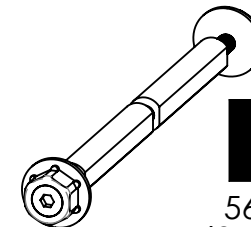
56625
(25 pack)



56609



56620

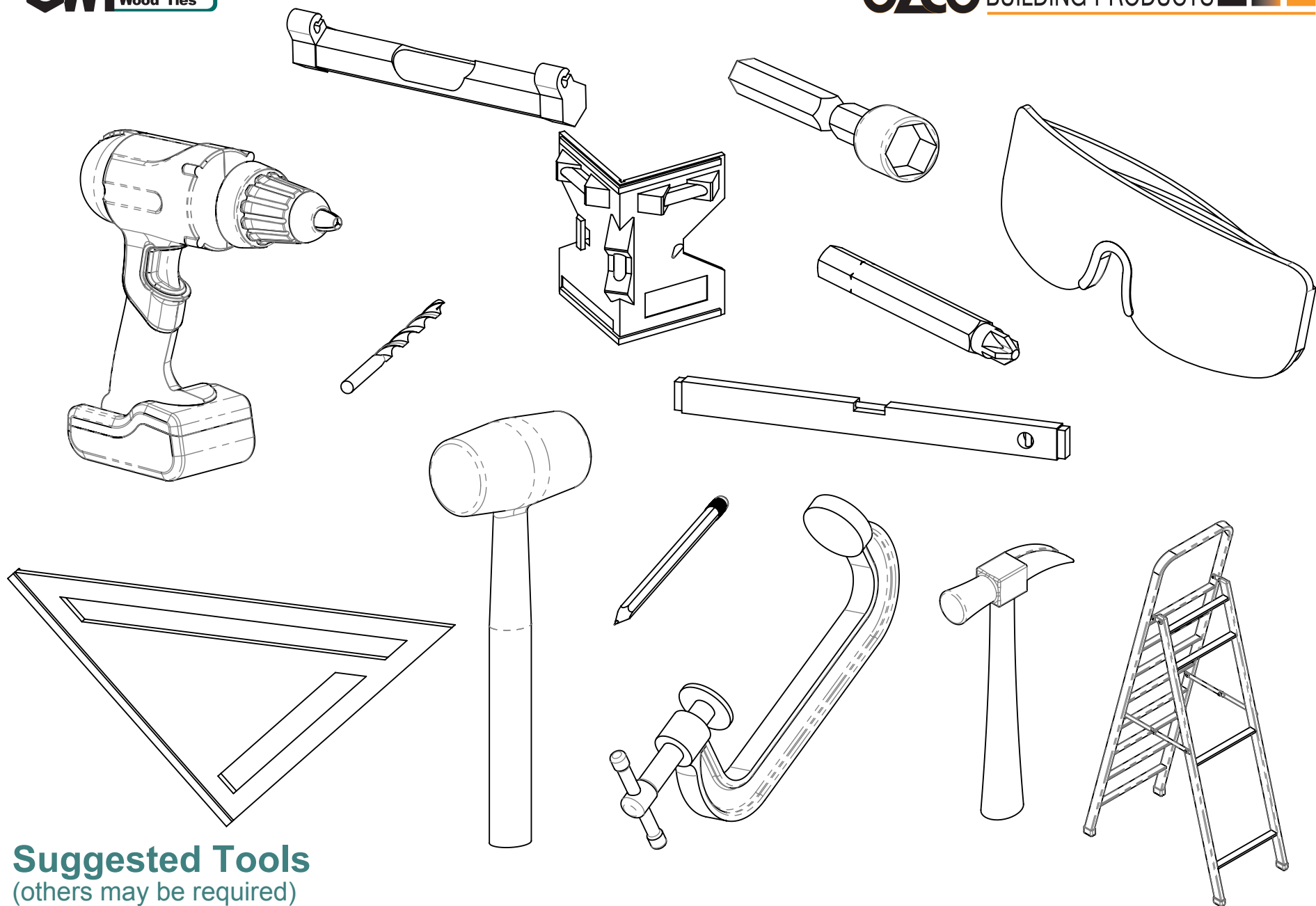


56651
(2 pack)



56621
(10 pack)



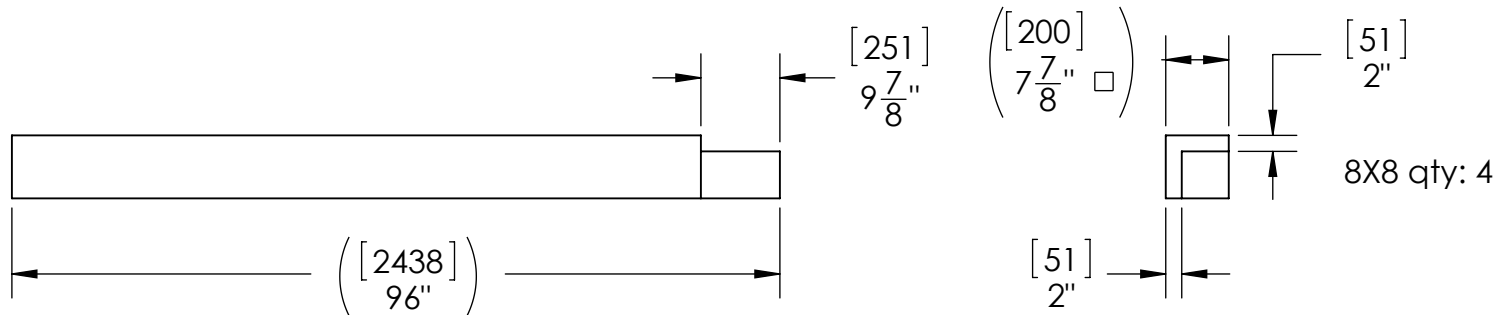
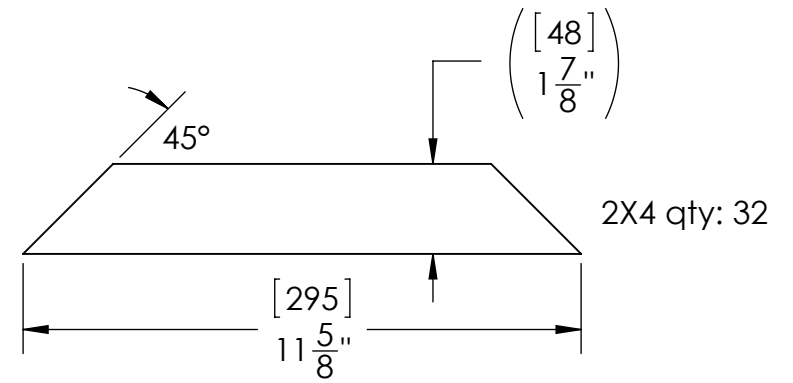
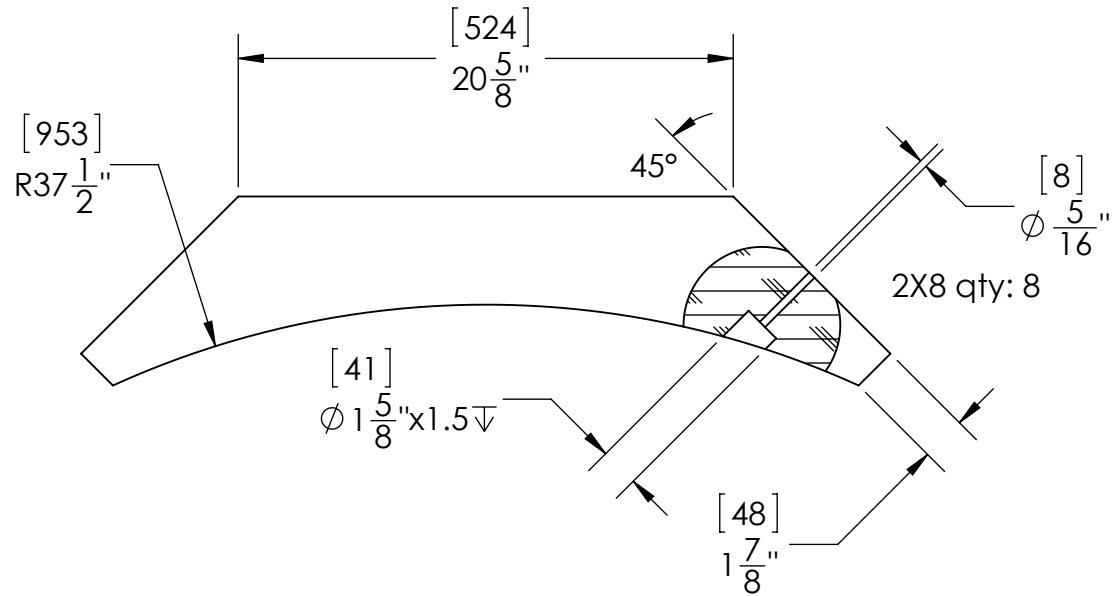


Suggested Tools

(others may be required)

Project 212 Pavilion Post and Beam – Free Standing

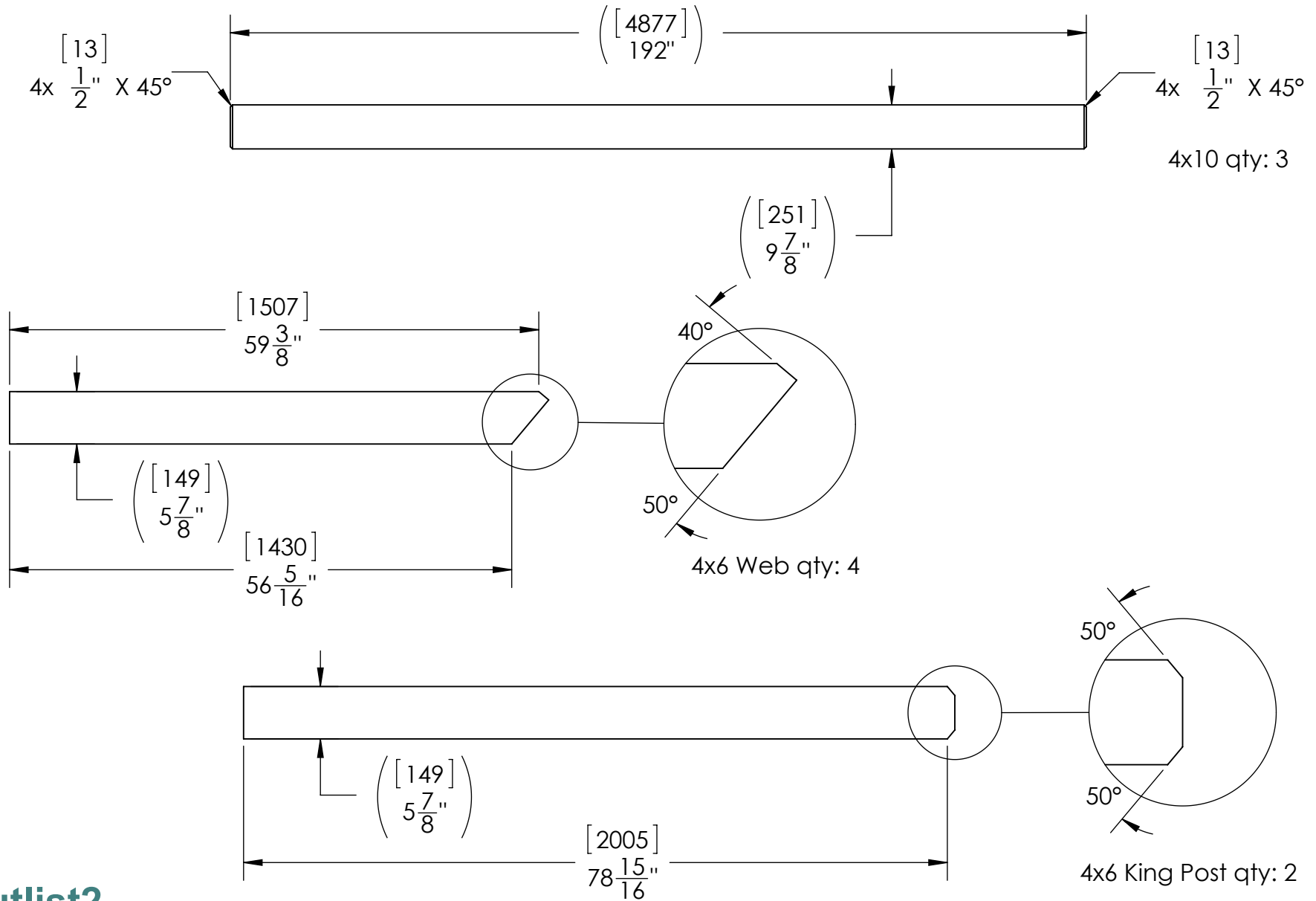
V1.00 - Installation Instructions effective May 1, 2015 and reflects information that available as of April 10, 2014. This information is updated periodically and should not be relied upon after May 1, 2015. Please visit www.OZCOBP.com to get current information



Cutlist1

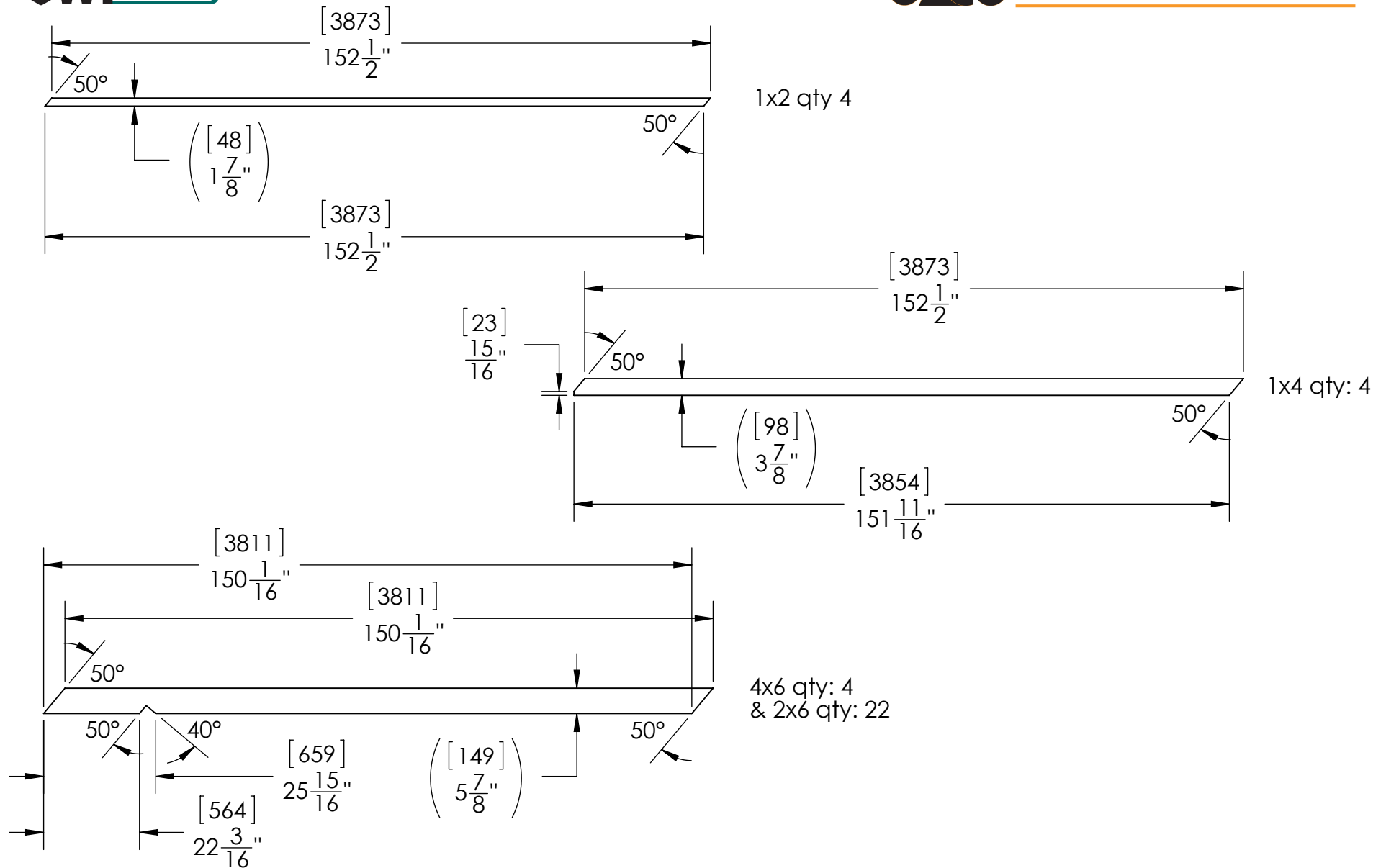
Project 212 Pavilion Post and Beam – Free Standing

V1.00 - Installation Instructions effective May 1, 2015 and reflects information that available as of April 10, 2014. This information is updated periodically and should not be relied upon after May 1, 2015. Please visit www.OZCOBP.com to get current information



Cutlist2

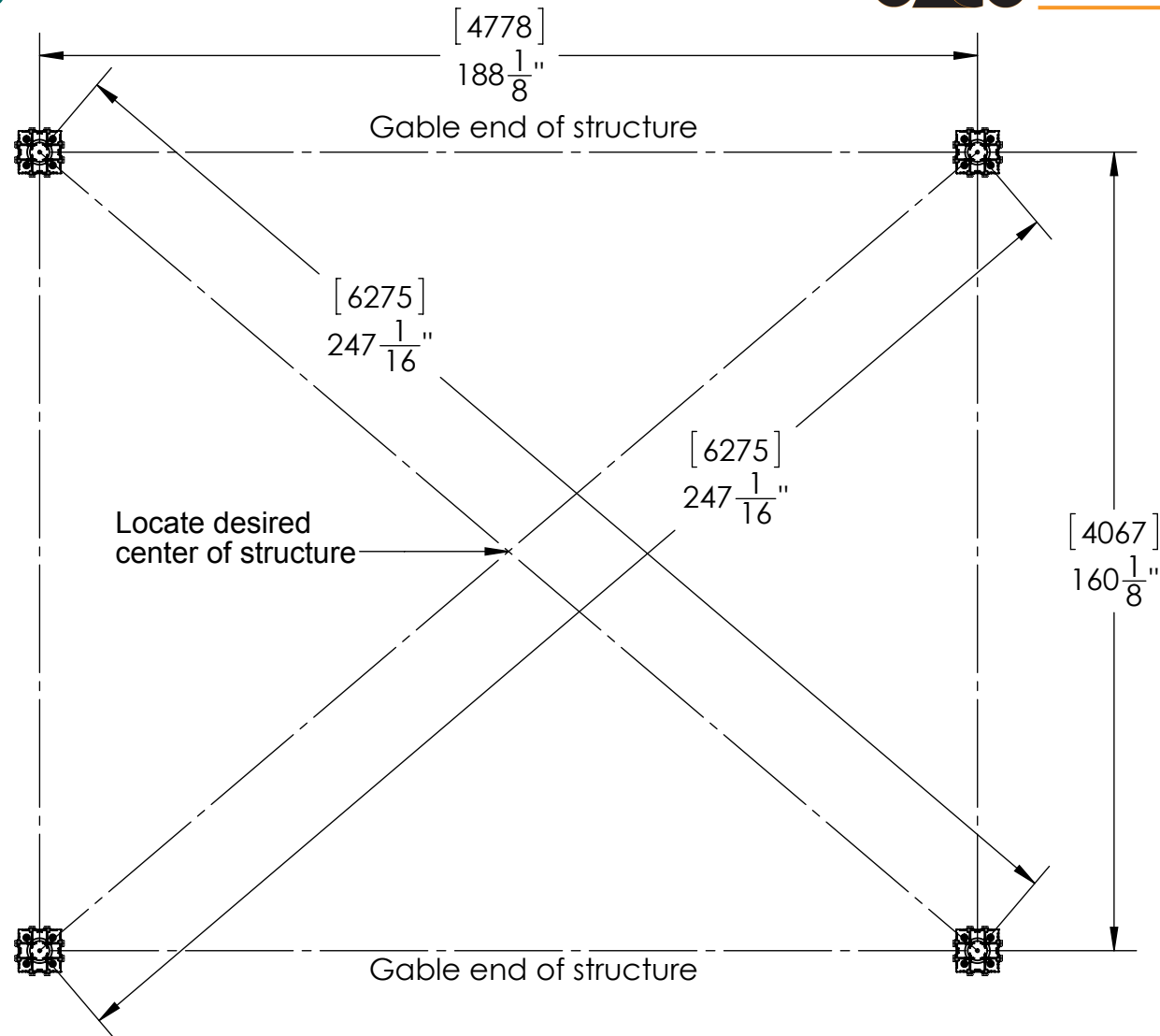
Project 212 Pavilion Post and Beam – Free Standing



Cutlist3

Project 212 Pavilion Post and Beam – Free Standing

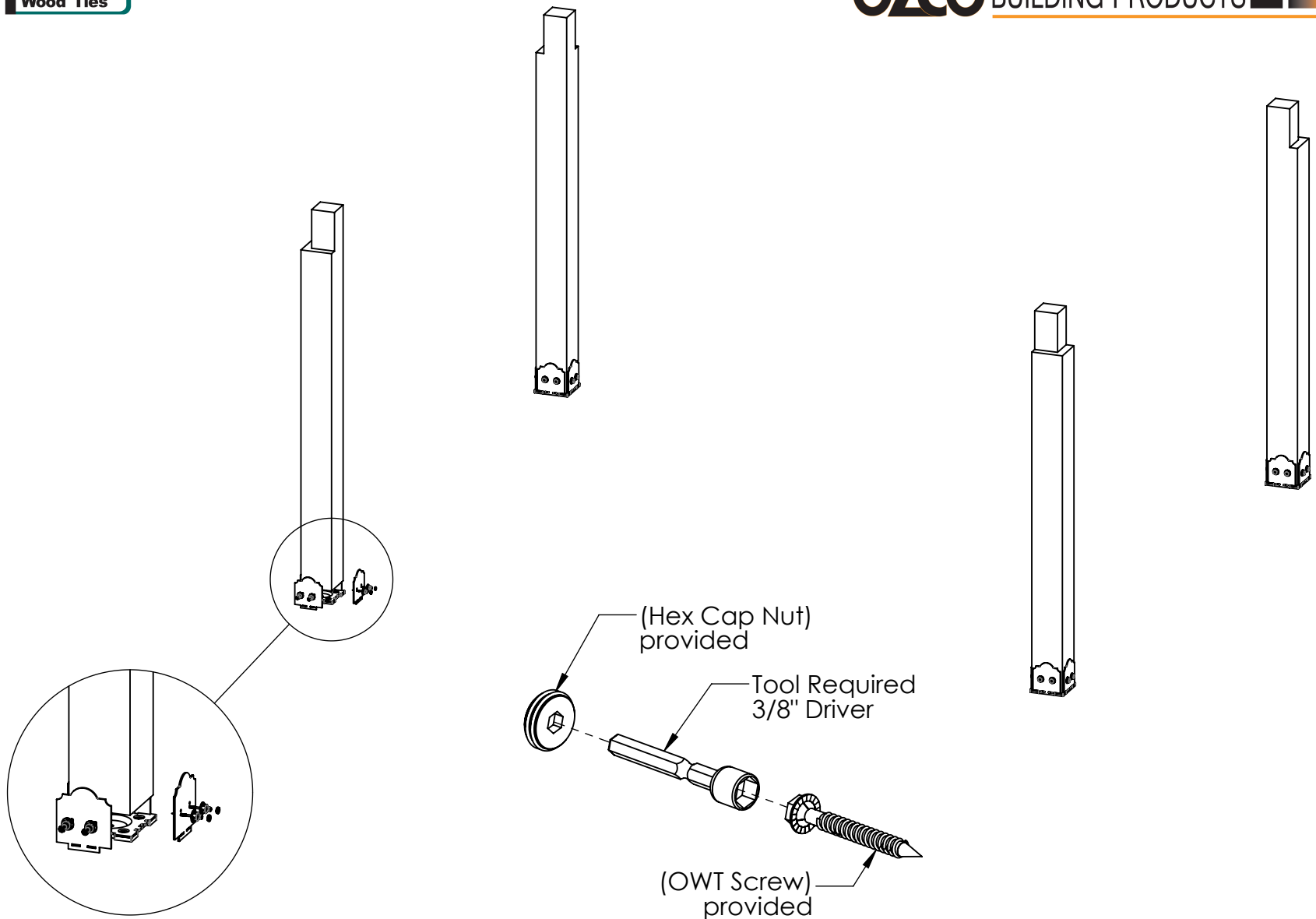
V1.00 - Installation Instructions effective May 1, 2015 and reflects information that available as of April 10, 2014. This information is updated periodically and should not be relied upon after May 1, 2015. Please visit www.OZCOBP.com to get current information



if site is not level,
see Ozco Site Leveling instruction

site

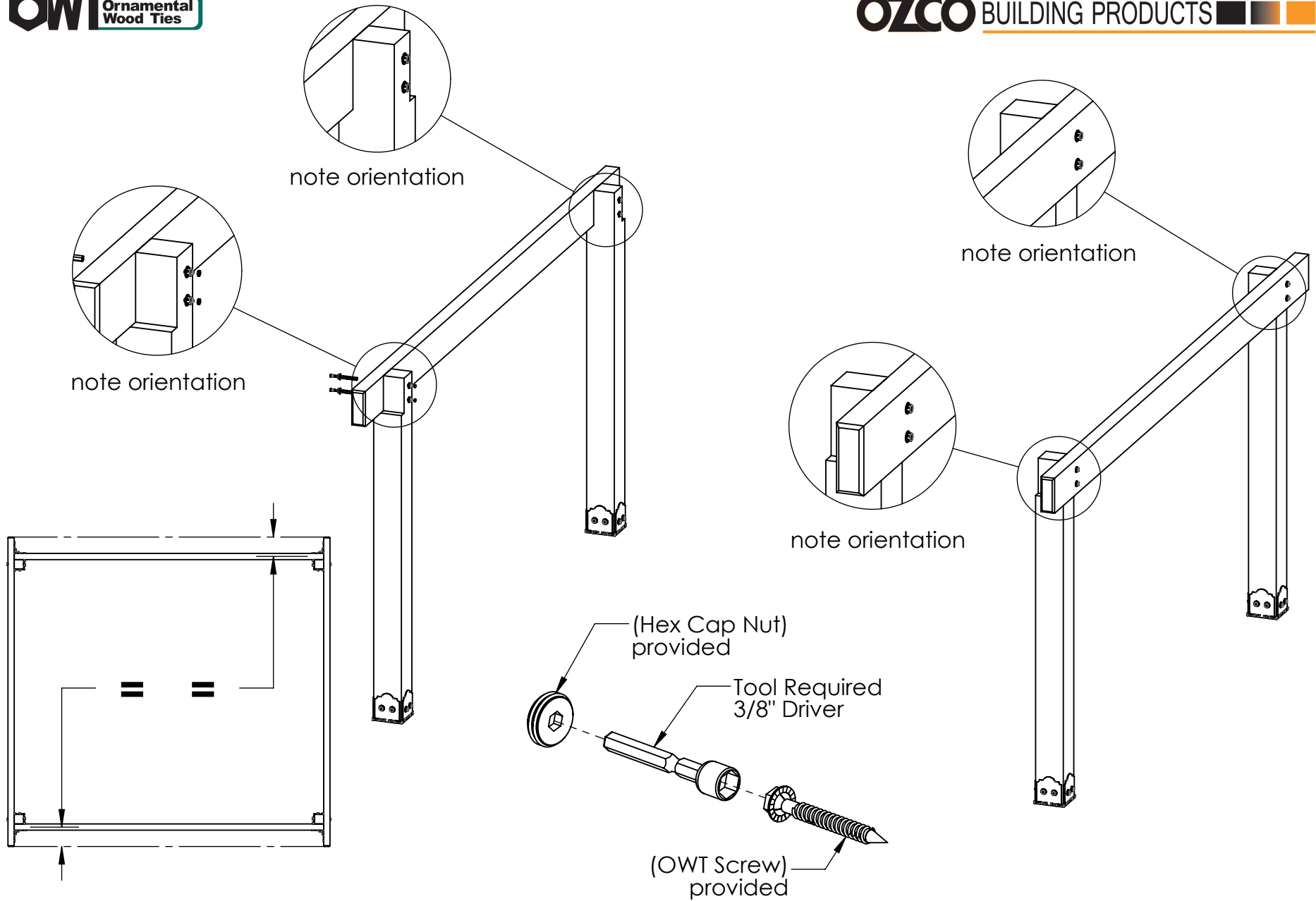
Project 212 Pavilion Post and Beam – Free Standing



step 1

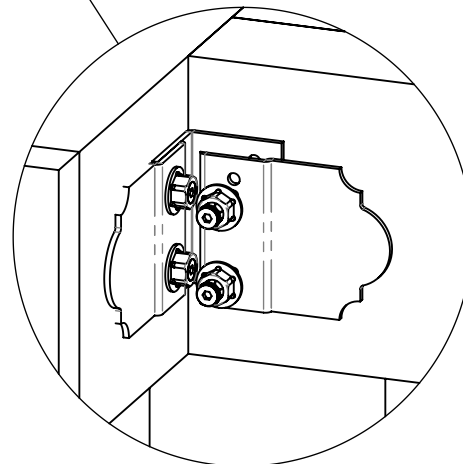
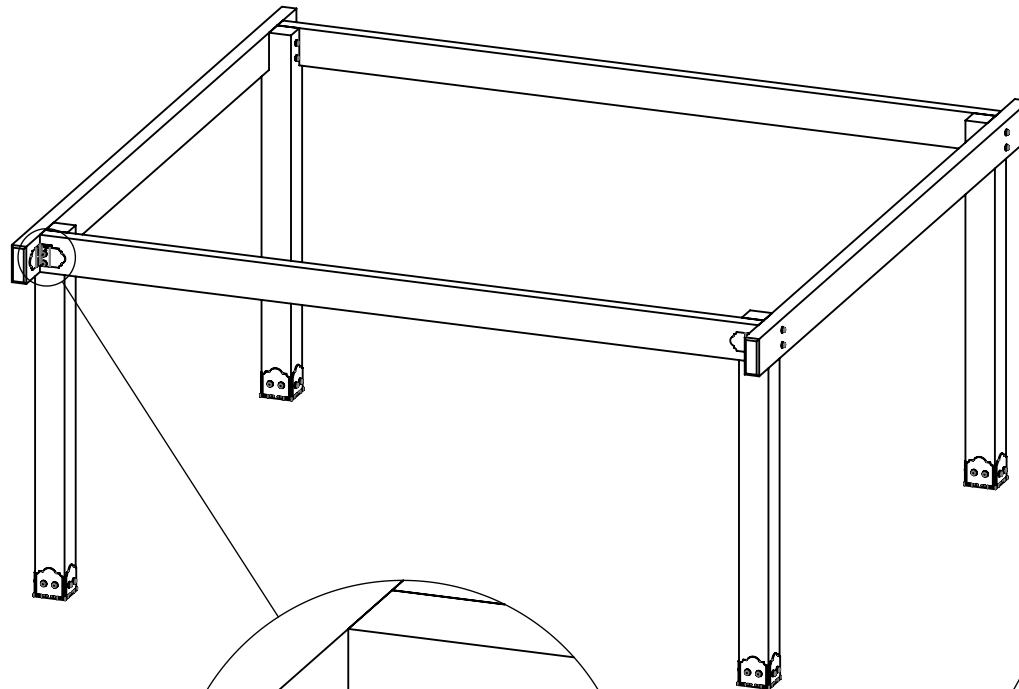
Project 212 Pavilion Post and Beam – Free Standing

V1.00 - Installation Instructions effective May 1, 2015 and reflects information that available as of April 10, 2014. This information is updated periodically and should not be relied upon after May 1, 2015. Please visit www.OZCOBP.com to get current information

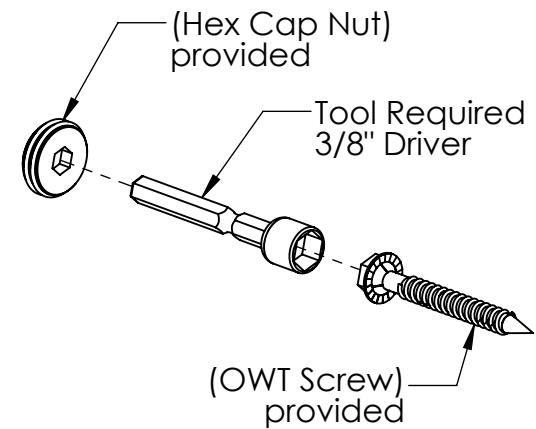


step 2

Project 212 Pavilion Post and Beam – Free Standing

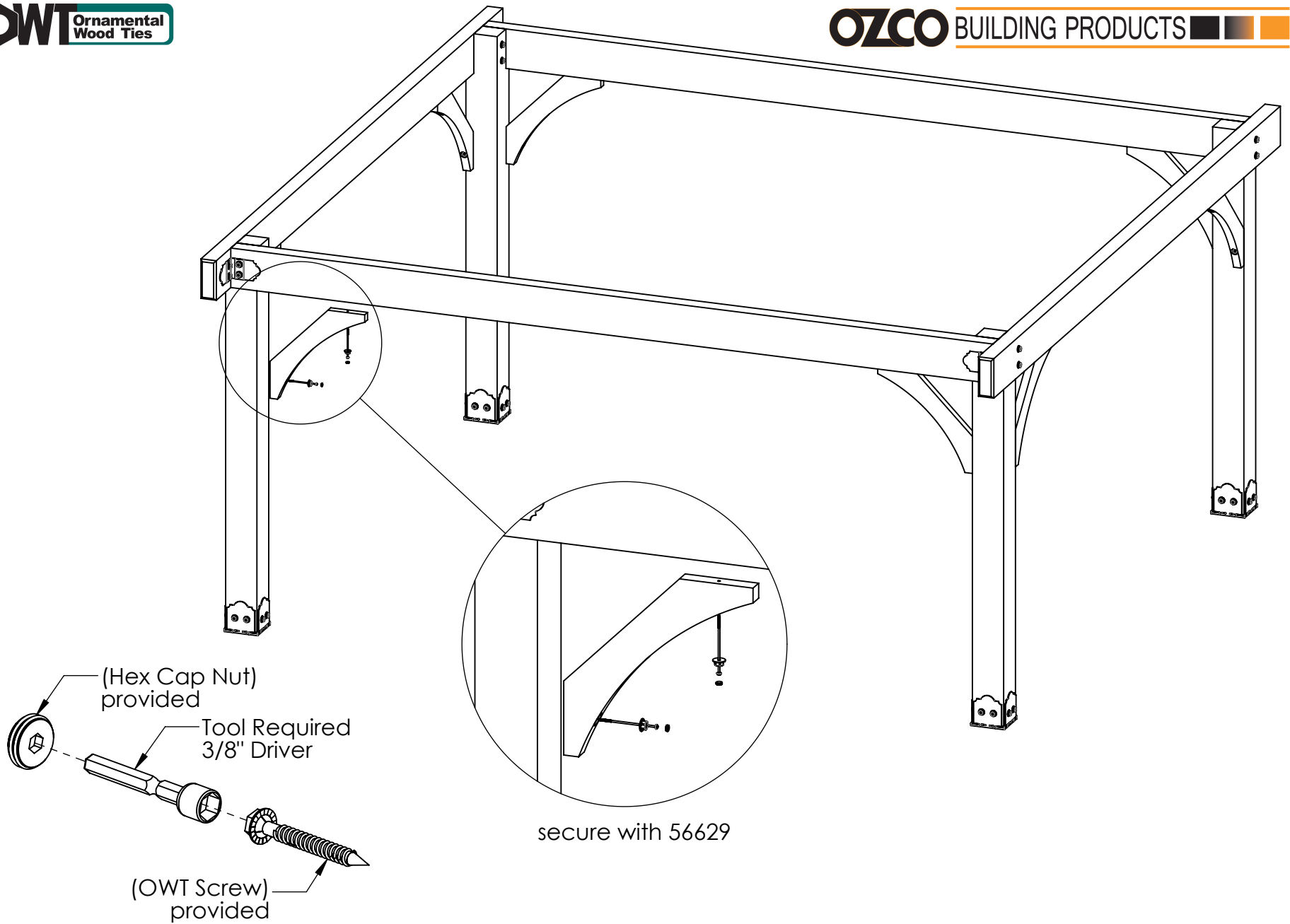


secure with 56625
(not shown)



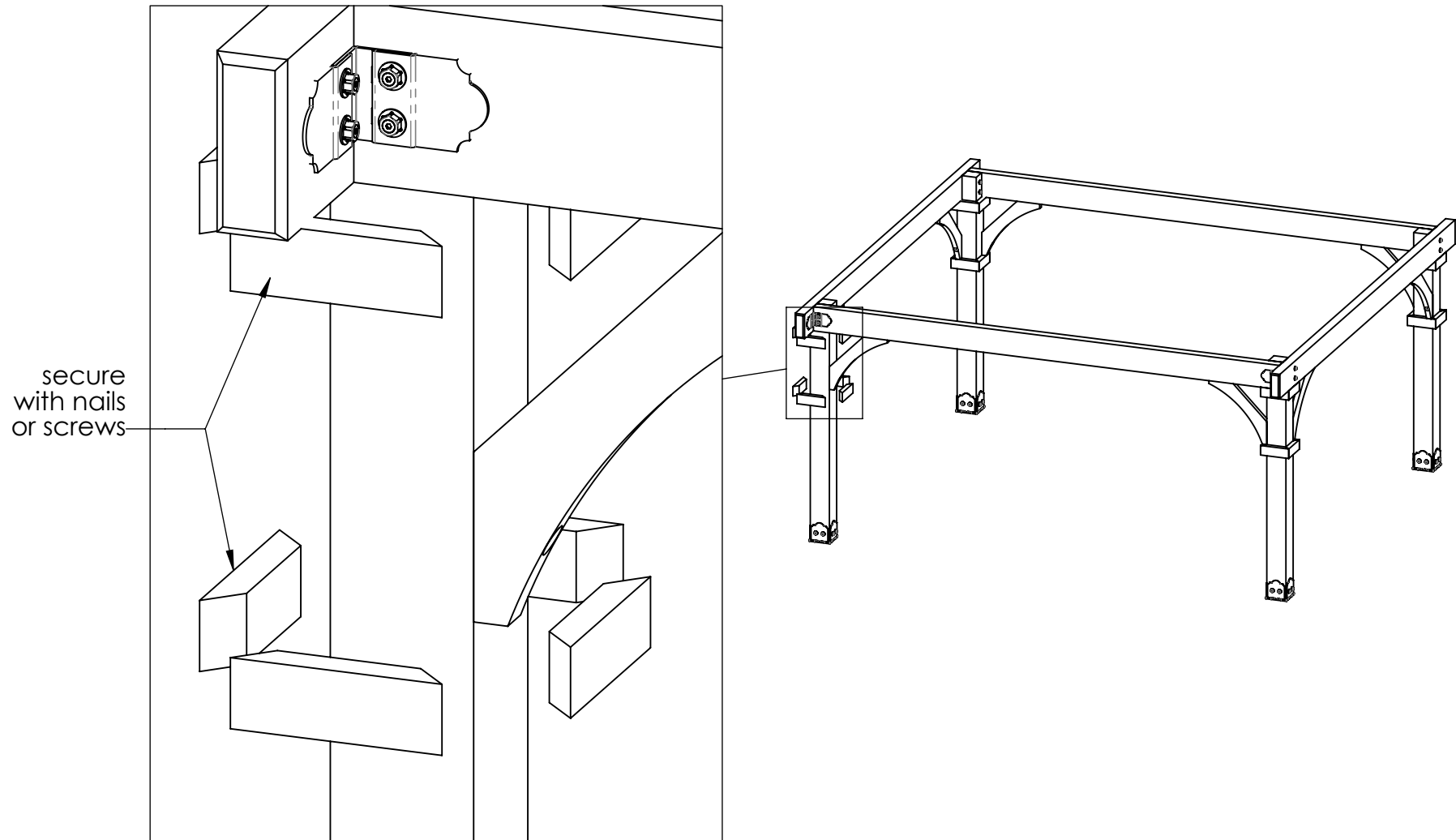
step 3

Project 212 Pavilion Post and Beam – Free Standing



step 4

Project 212 Pavilion Post and Beam – Free Standing

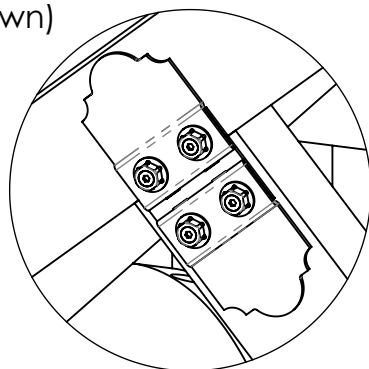


step 5

Project 212 Pavilion Post and Beam – Free Standing

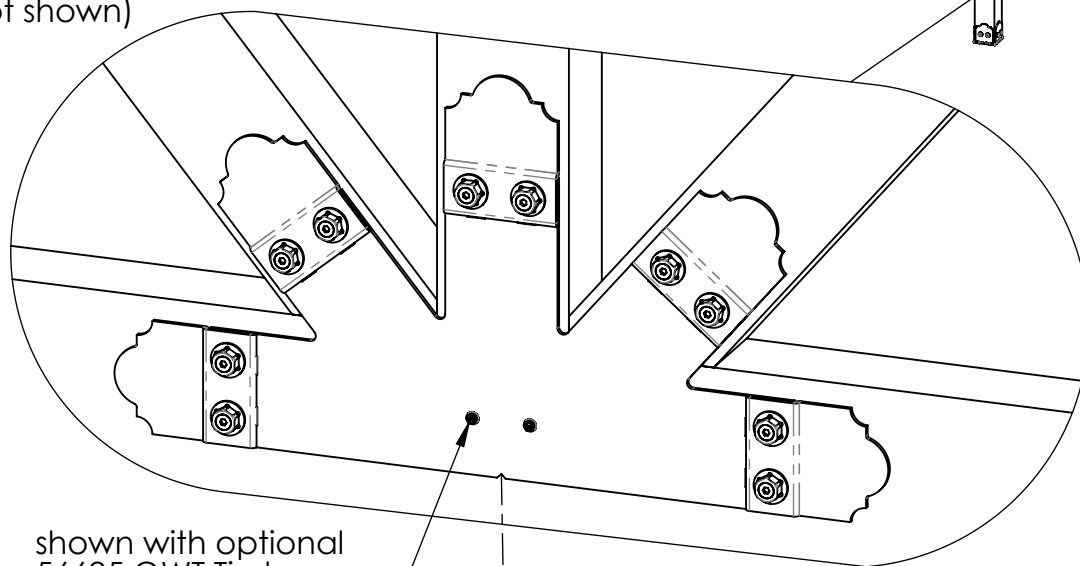
V1.00 - Installation Instructions effective May 1, 2015 and reflects information that available as of April 10, 2014. This information is updated periodically and should not be relied upon after May 1, 2015. Please visit www.OZCOBP.com to get current information

secure with 56625
(not shown)

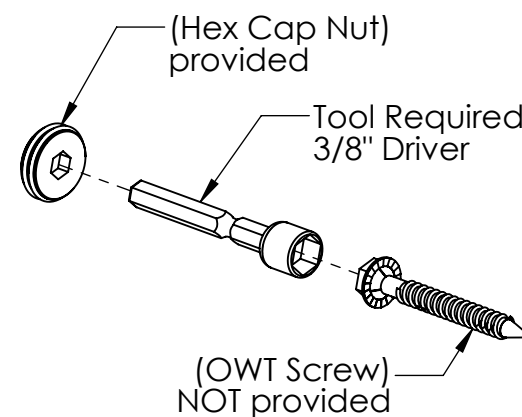
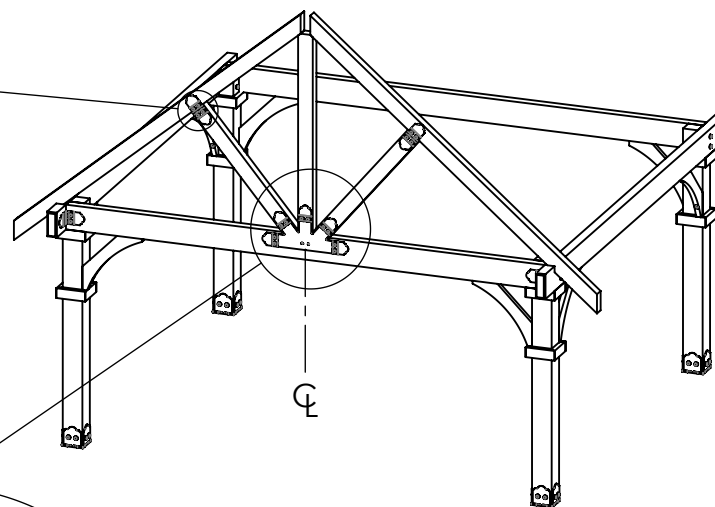


repeat connectors on
backside of Truss

secure with 56625
(not shown)



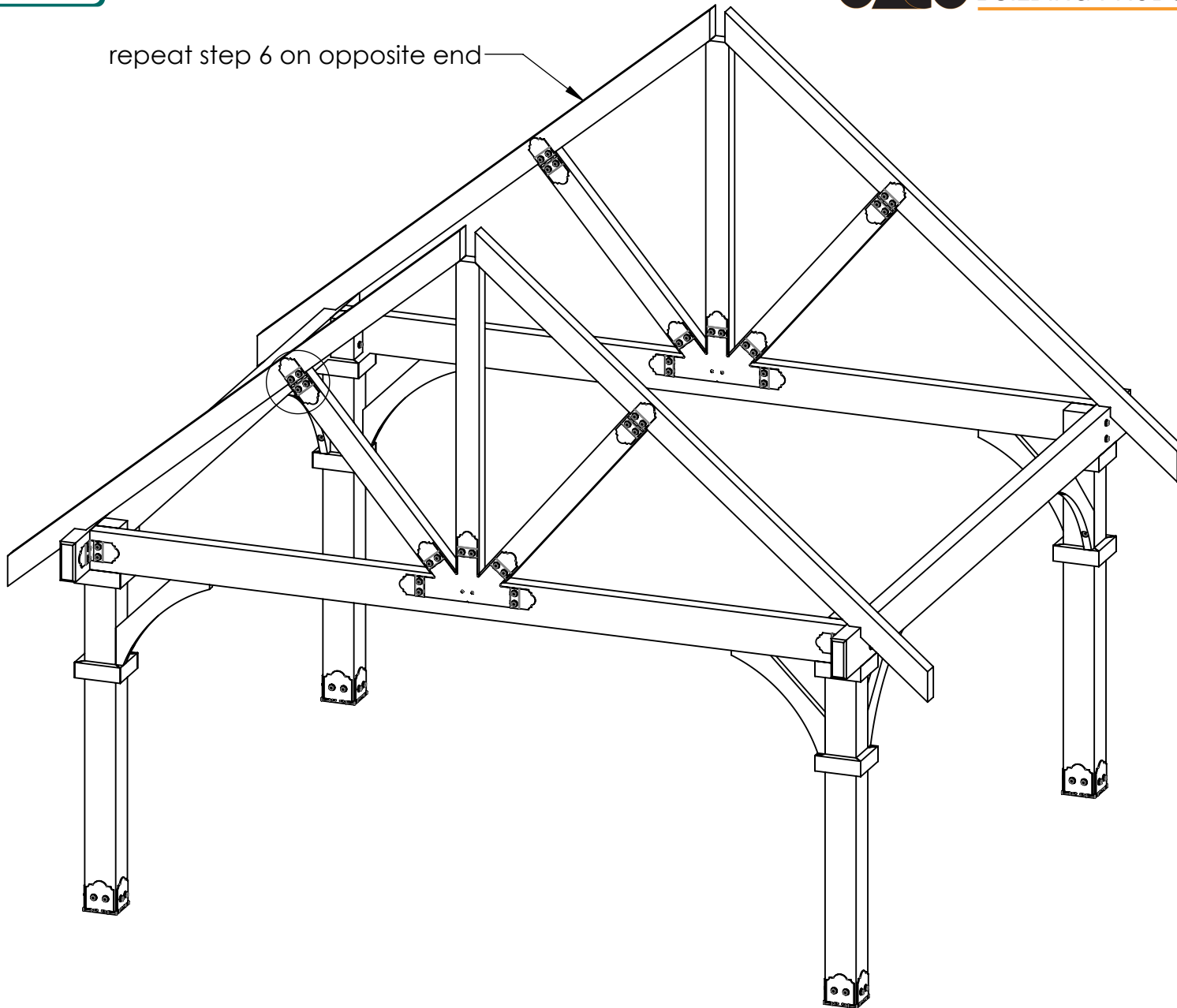
shown with optional
56625 OWT Timber
Screw



step 6

Project 212 Pavilion Post and Beam – Free Standing

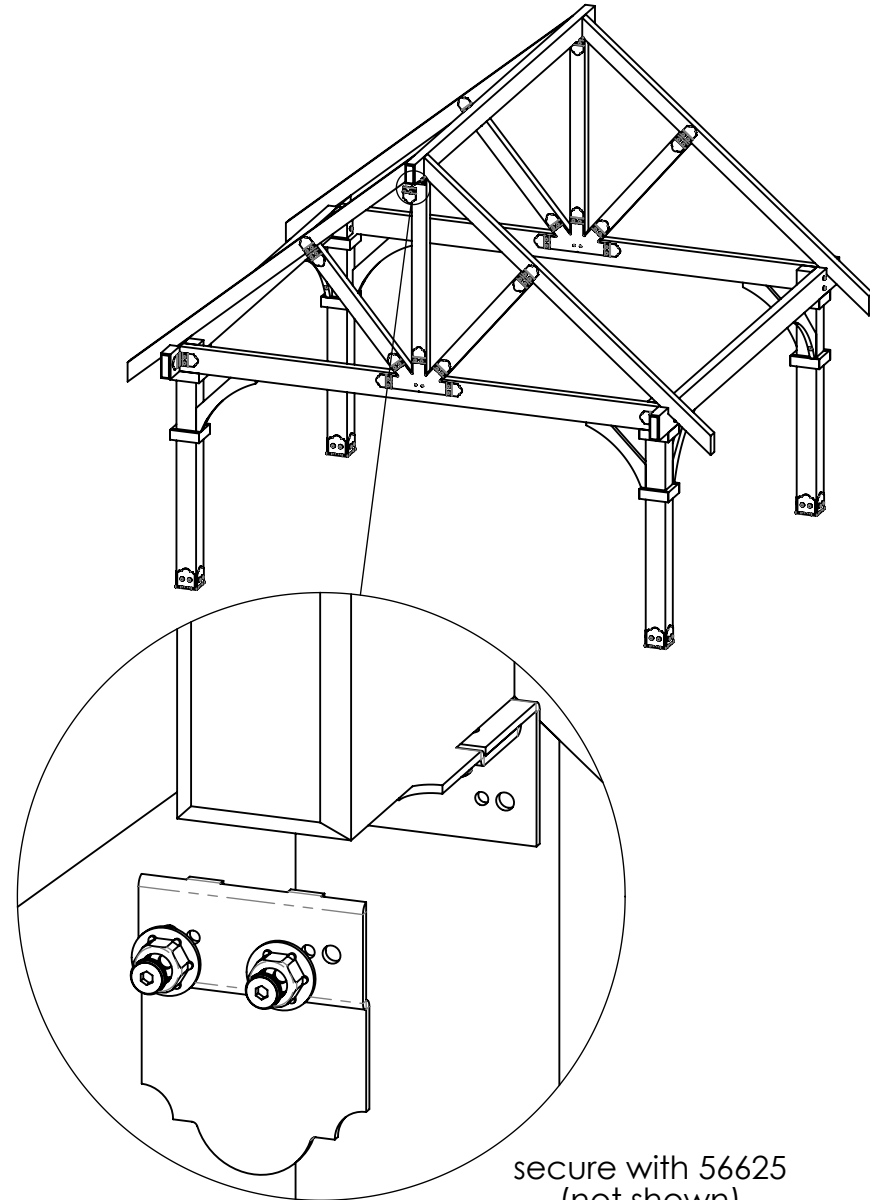
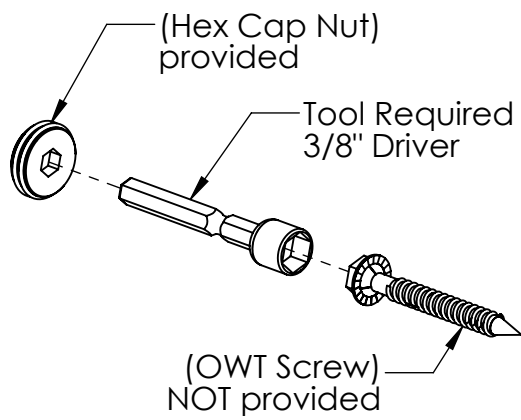
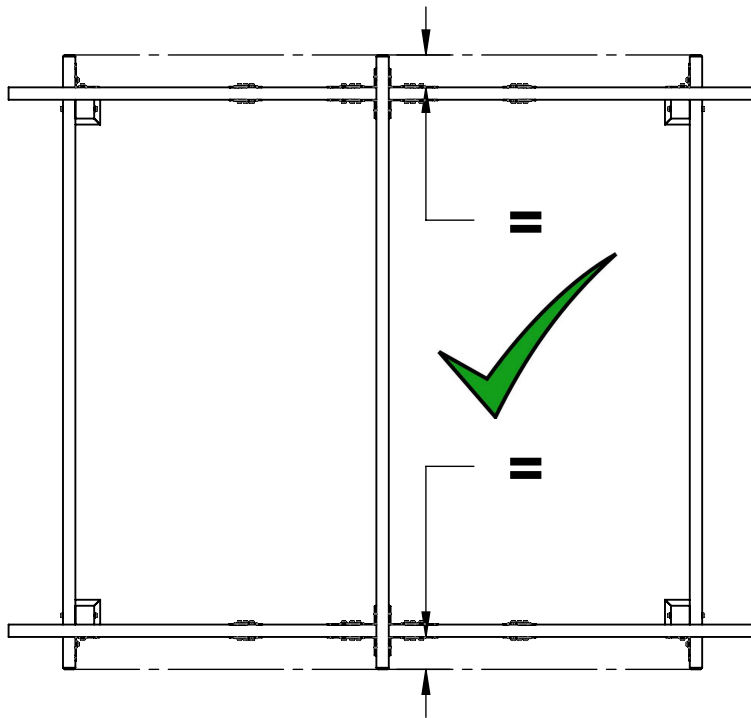
repeat step 6 on opposite end



step 7

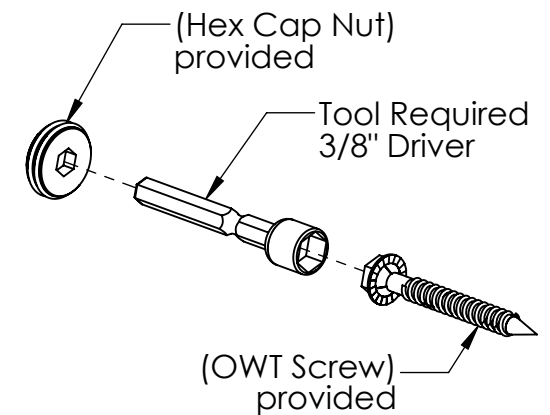
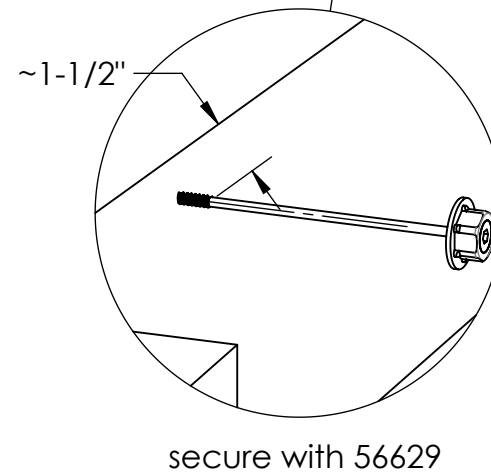
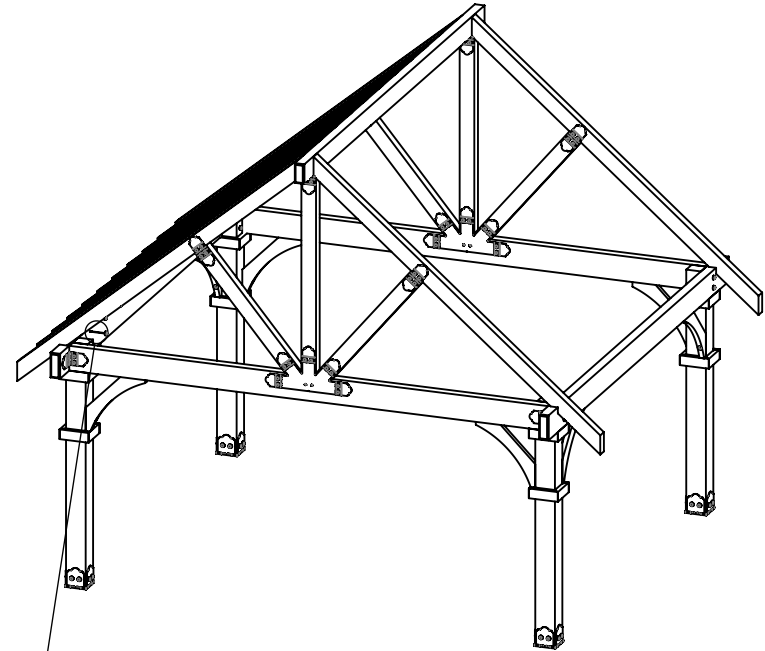
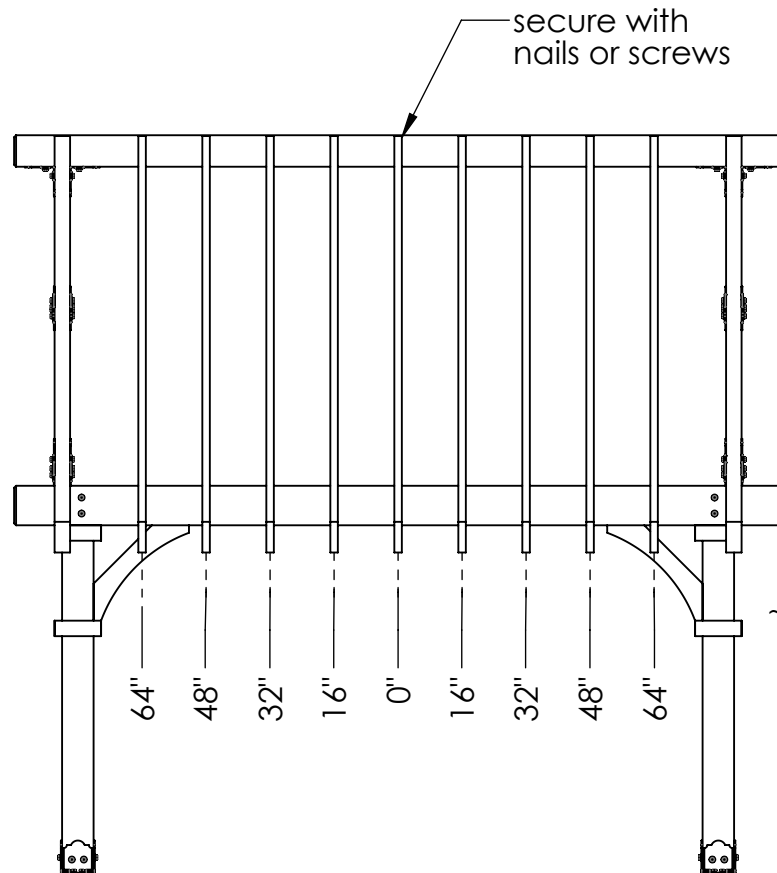
Project 212 Pavilion Post and Beam – Free Standing

V1.00 - Installation Instructions effective May 1, 2015 and reflects information that available as of April 10, 2014. This information is updated periodically and should not be relied upon after May 1, 2015. Please visit www.OZCOBP.com to get current information



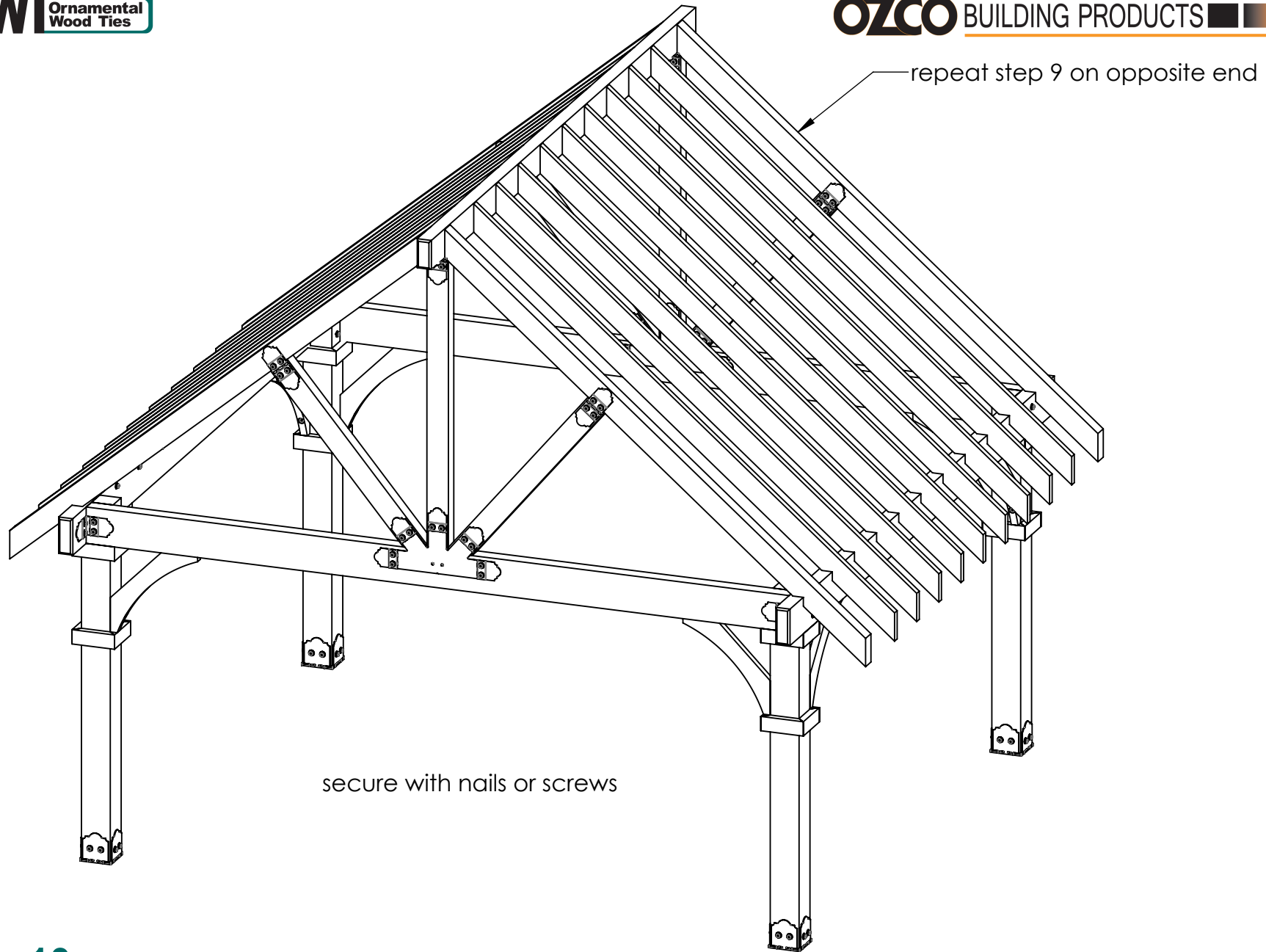
step 8

Project 212 Pavilion Post and Beam – Free Standing



step 9

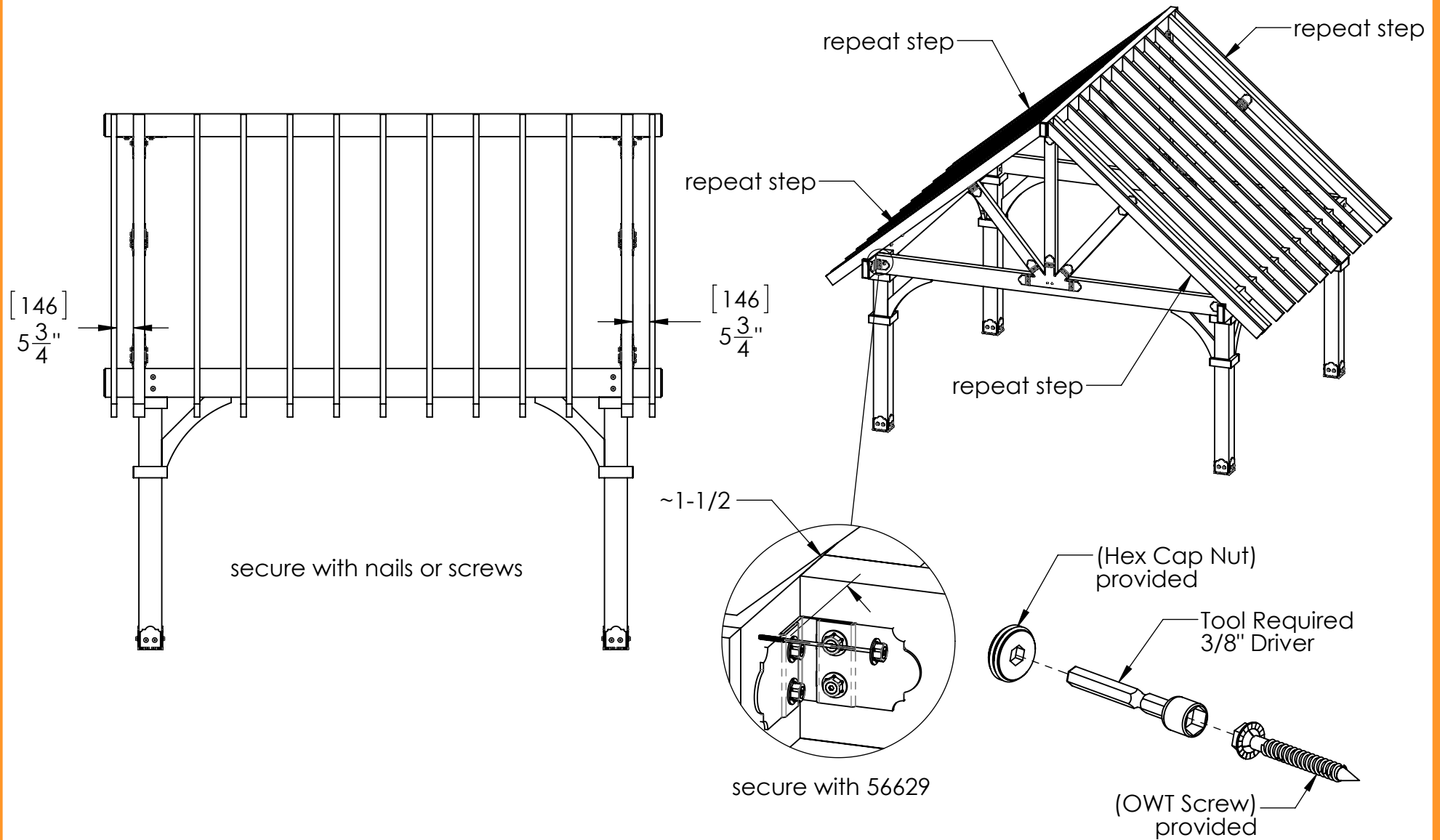
Project 212 Pavilion Post and Beam – Free Standing



step 10

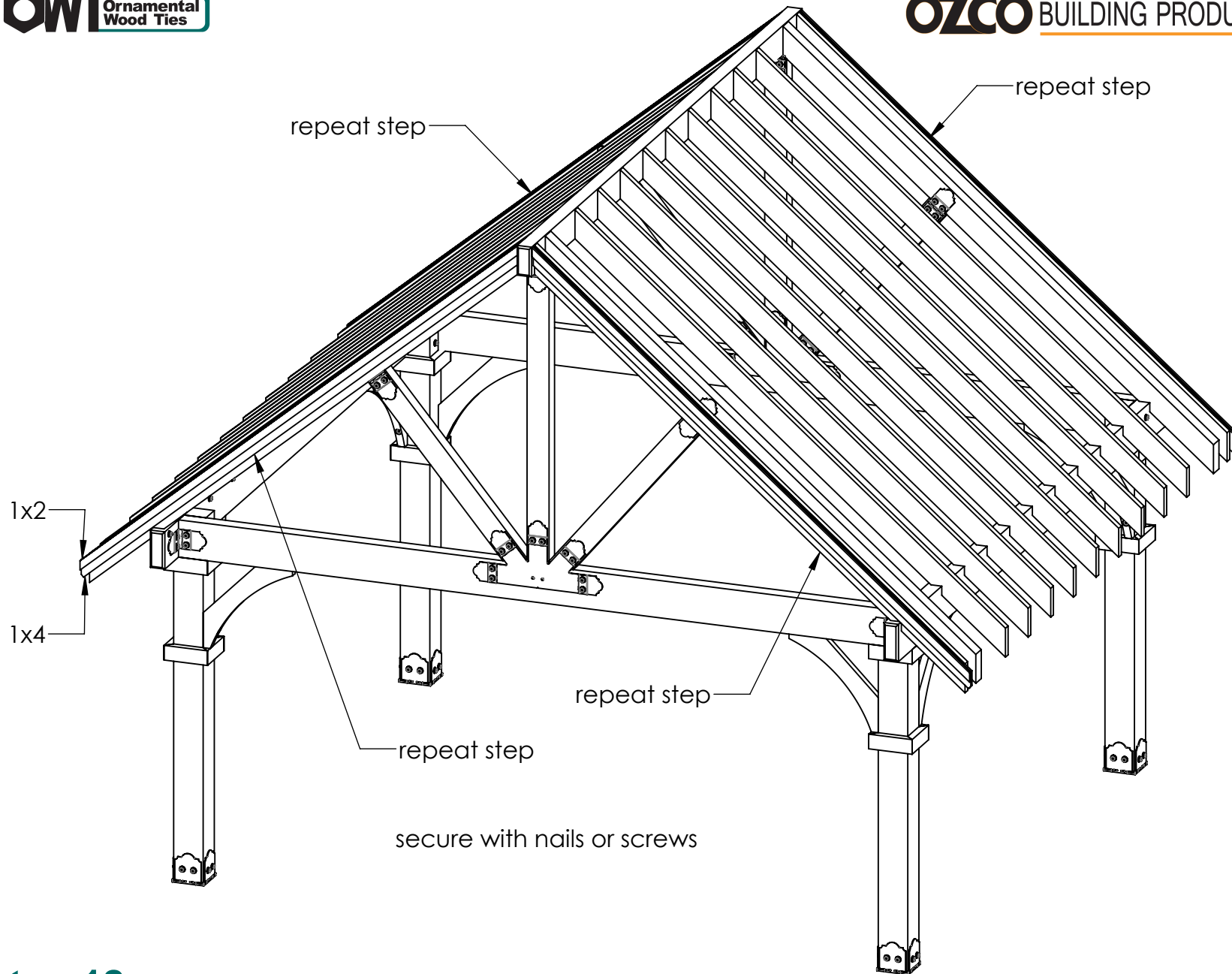
Project 212 Pavilion Post and Beam – Free Standing

V1.00 - Installation Instructions effective May 1, 2015 and reflects information that available as of April 10, 2014. This information is updated periodically and should not be relied upon after May 1, 2015. Please visit www.OZCOBP.com to get current information



step 11

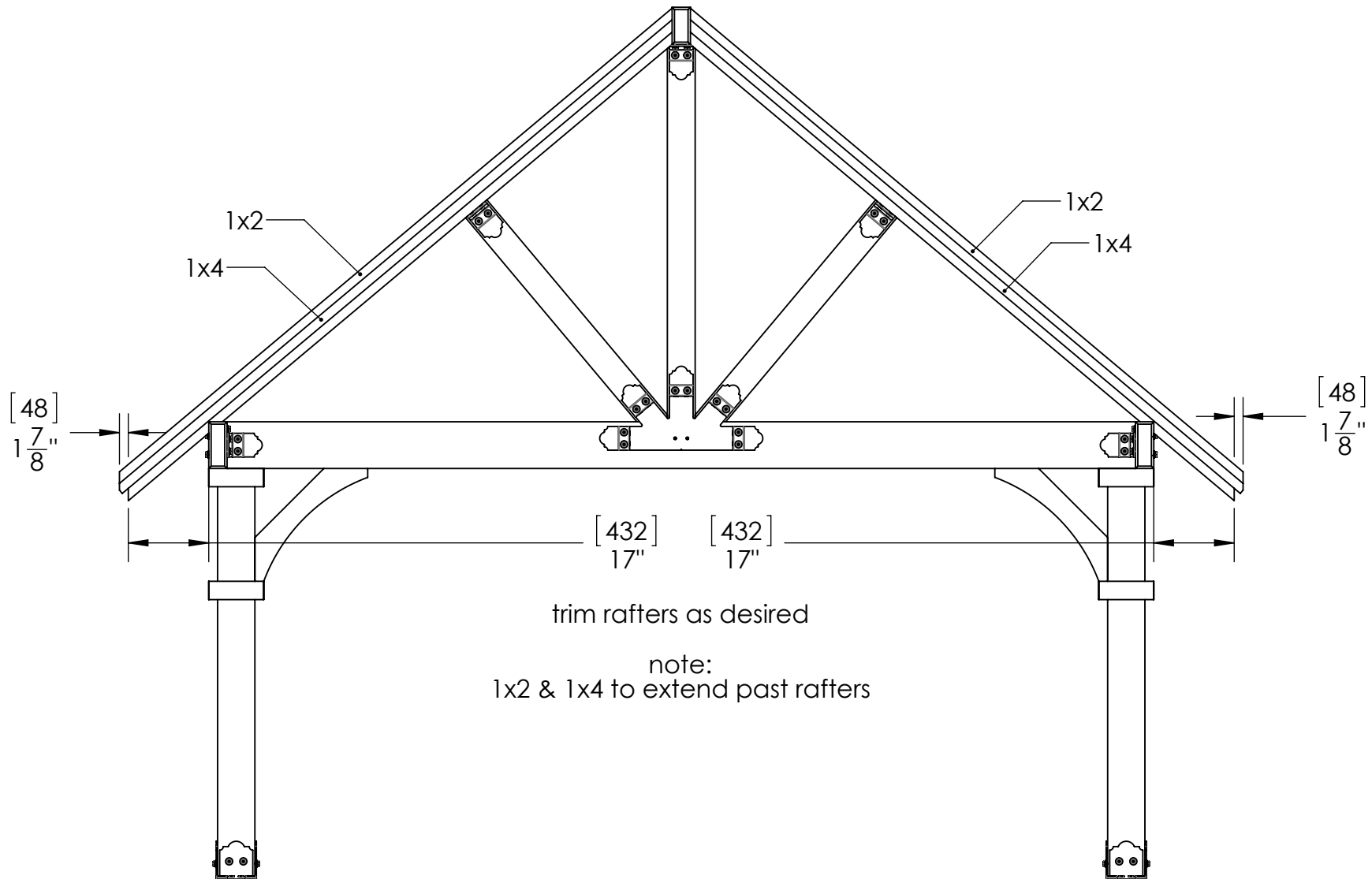
Project 212 Pavilion Post and Beam – Free Standing



step 12

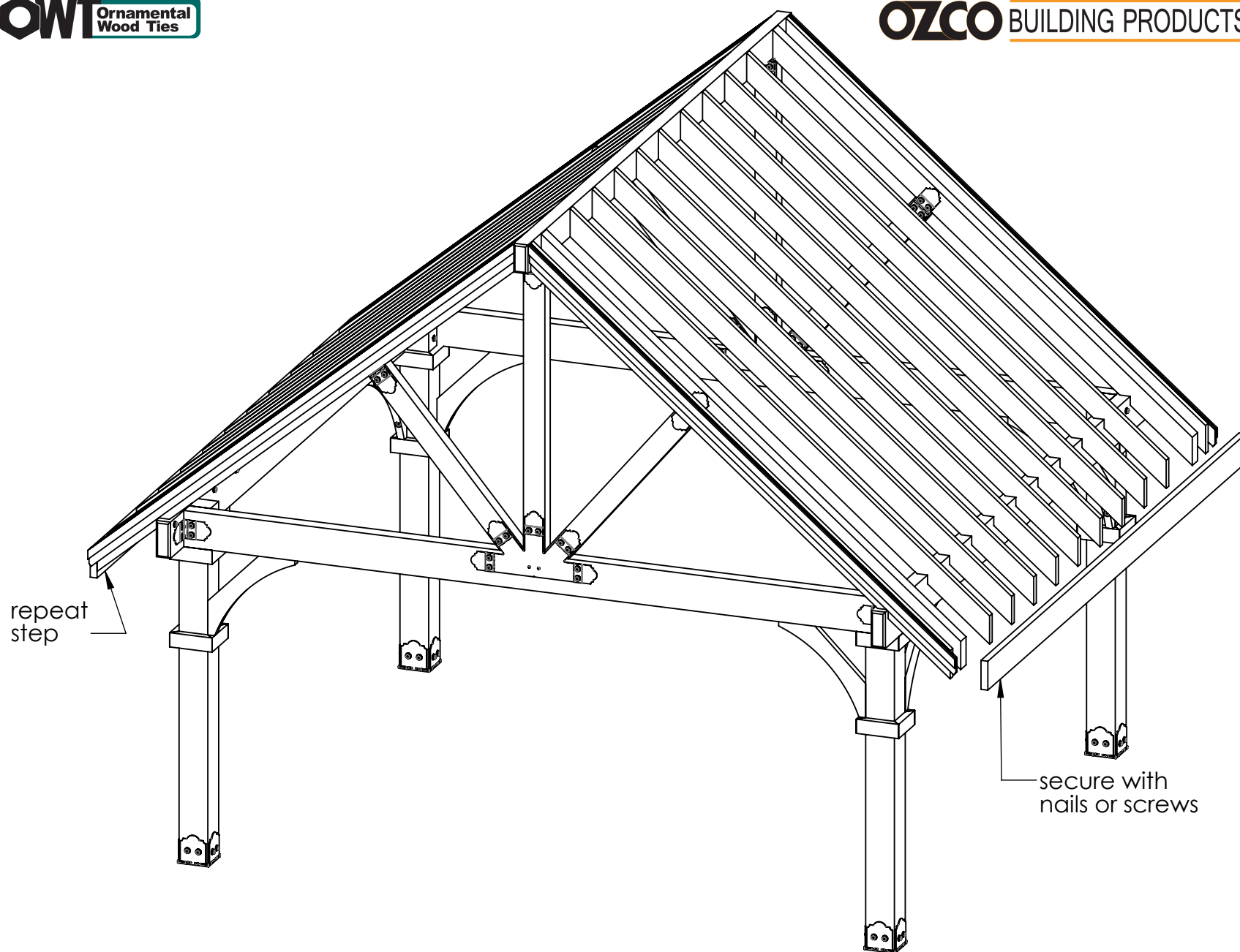
Project 212 Pavilion Post and Beam – Free Standing

V1.00 - Installation Instructions effective May 1, 2015 and reflects information that available as of April 10, 2014. This information is updated periodically and should not be relied upon after May 1, 2015. Please visit www.OZCOBP.com to get current information



step 13

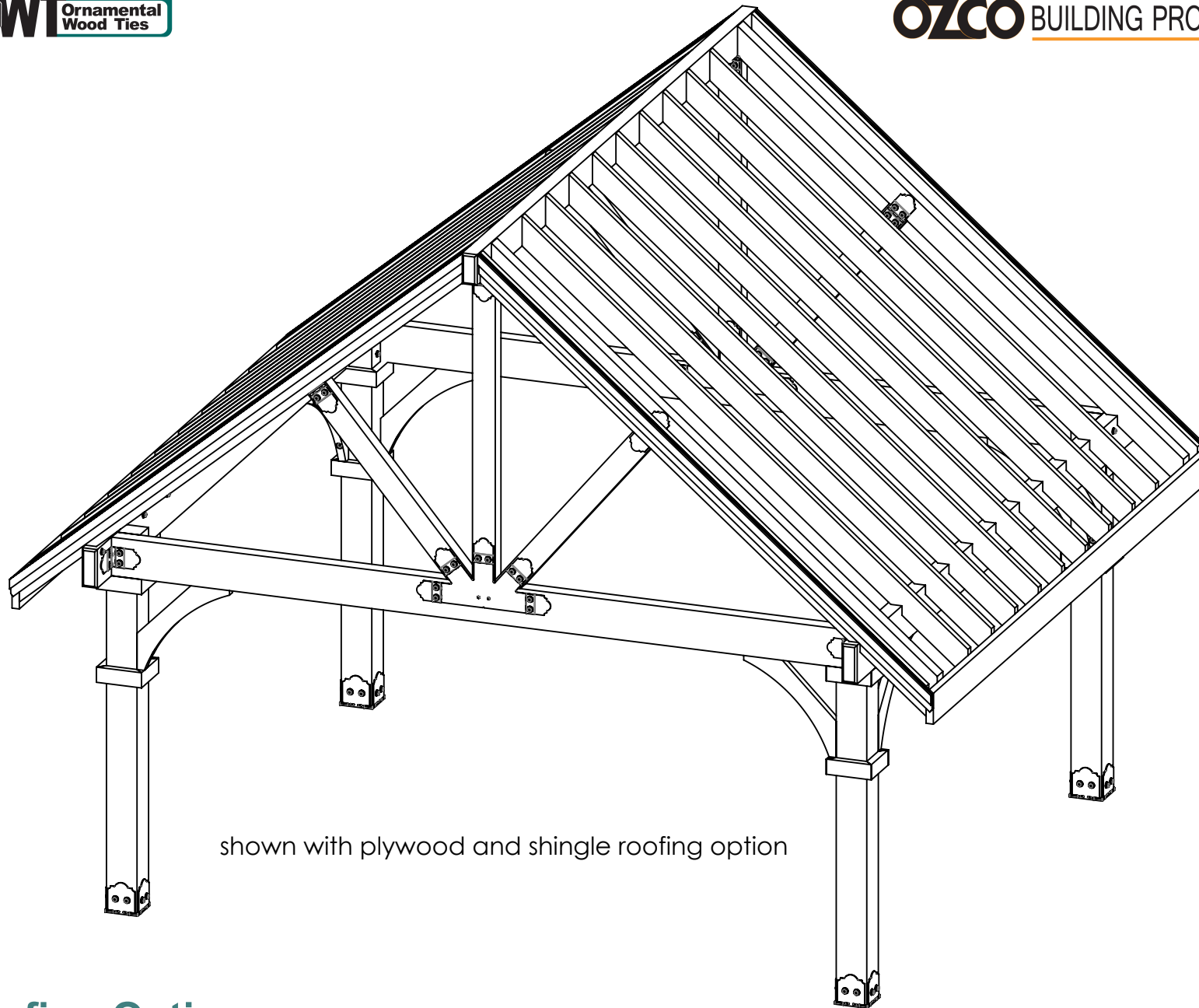
Project 212 Pavilion Post and Beam – Free Standing



step 14

Project 212 Pavilion Post and Beam – Free Standing

V1.00 - Installation Instructions effective May 1, 2015 and reflects information that available as of April 10, 2014. This information is updated periodically and should not be relied upon after May 1, 2015. Please visit www.OZCOBP.com to get current information



shown with plywood and shingle roofing option

Roofing Option

Project 212 Pavilion Post and Beam – Free Standing

V1.00 - Installation Instructions effective May 1, 2015 and reflects information that available as of April 10, 2014. This information is updated periodically and should not be relied upon after May 1, 2015. Please visit www.OZCOBP.com to get current information