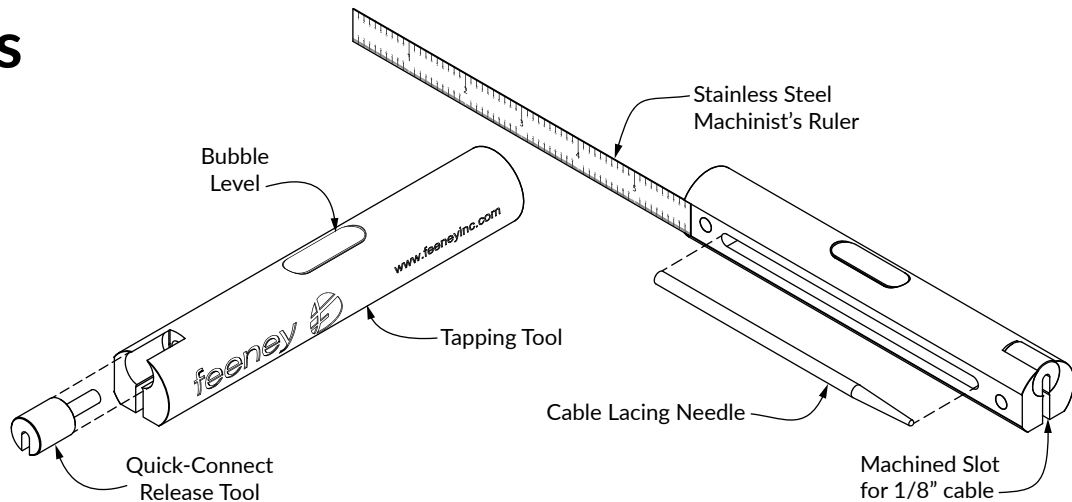
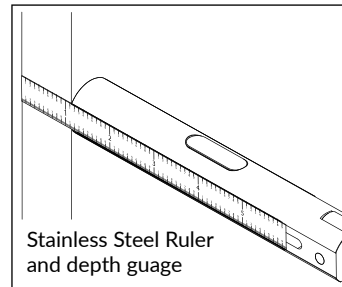
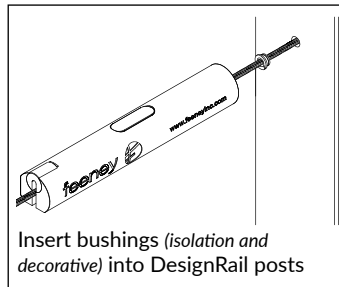
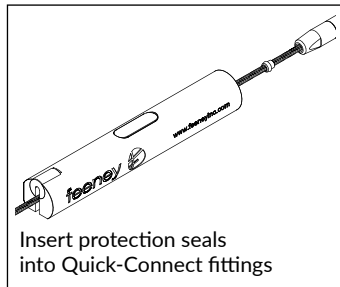
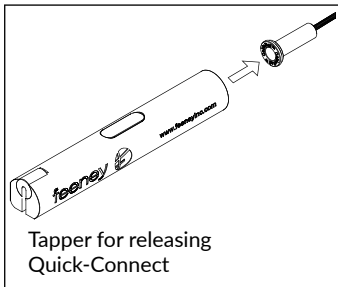


Instructions

for MultiTool



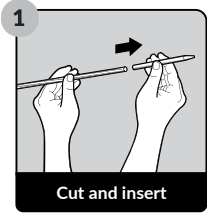
Primary Functions



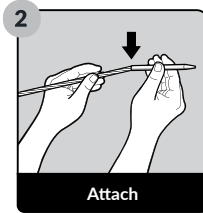
Cable Lacing Needle Instructions

FOR 1/8-INCH DIAMETER CABLE

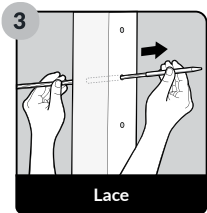
Reusable tool for quickly lacing the loose cable ends through post holes without fraying or snagging.



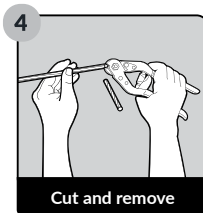
1
Cleanly cut the cable end and insert it approximately 3/4-inch into the needle hole.



2
Bend cable to form a slight kink then push it all the way into the hole. The kink will help hold the needle on the cable.



3
Lace the needle and cable through the post holes.



4
When finished, remove needle and cleanly cut the cable below the kink mark.

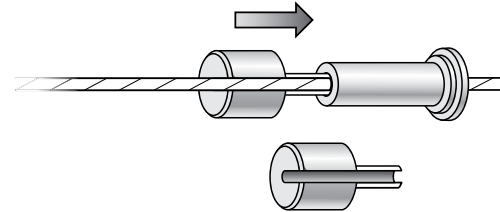
IMPORTANT: Remove Lacing Needle before inserting cable into Quick-Connect® Inset fitting.

For complete information on installation, care & maintenance, warranty, and product registration, visit feeneyinc.com/CRinfo

Quick-Connect® Release Tool Instructions

FOR ALL 1/8-INCH QUICK-CONNECT® FITTINGS

Reusable tool for temporarily releasing the jaws of Quick-Connect® fittings to remove or adjust the position of the fitting.



Insert the shaft of the tool into the end of the Quick-Connect® fitting and push firmly to release the jaws. While maintaining pressure on the tool, remove or reposition the fitting as needed. The jaws will automatically re-grip the cable when the tool is removed. Note, if the fitting has a silicone Protection Seal, remove seal prior to inserting the tool.