

Installation Instructions

Step 1 (Installing the RainEscape Downspouts) If working on an existing deck, first remove the decking. Install the *RainEscape Downspouts*. The *RainEscape Downspout* was designed to work with both 12" and 16" centers. Find the appropriate side of the *RainEscape Downspout* and cut along the marked line. Install one *RainEscape Downspout* at the end of each joist bay and staple into place. Downspouts may be installed at either end of the joist bay. Be sure downspout extends at least 1" directly into the gutter. Decks with 24" centers can easily be retrofitted to use the RainEscape System. (See Figure 1)

Step 2 (Installing the RainEscape Troughs). Rain Escape troughs are designed with score marked 3" and 1 1/2" flanges on either side of the through. Use the score-marks to align the troughs on top of the floor joists. If starting at the house, place the 3" flashing under the siding. With the smooth side of the trough material facing up, place the wider 3" flange to the outside of the deck. Always start by stapling the opposite 1 1/2" flange on to the top edge of the floor joist as close as possible to the house. Roll out the trough until it reaches downspout. Check again the trough alignment with the top of the joist, pull tight and place a second staple on top of the joist.

Finish attaching the first side of the RainEscape Trough. Where the *RainEscape Trough* reaches the previously installed *RainEscape Downspout*, be sure to extend the trough material over the *RainEscape Downspout* to within 1/2" of the back wall and cut with scissors or suitable cutters. Roll the last few inches of the trough material back in the opposite direction to remove any memory. (See figure 3)

Step 3 (Attaching the second side of the RainEscape Trough) Begin stapling the first few feet of the second side flange starting directly across from where you finished the first side flange. Be sure to align the score marks of the second side flange with the inside top edge of the floor joist and staple. Work your way back to the house, pulling slightly and stapling on both sides of the trough to the top of both joist every 6" to 8" as you go. Make sure the trough is free of wrinkles and has proper fall, towards the downspout, for its entire length.

Repeat steps for each subsequent bay to finish installation.

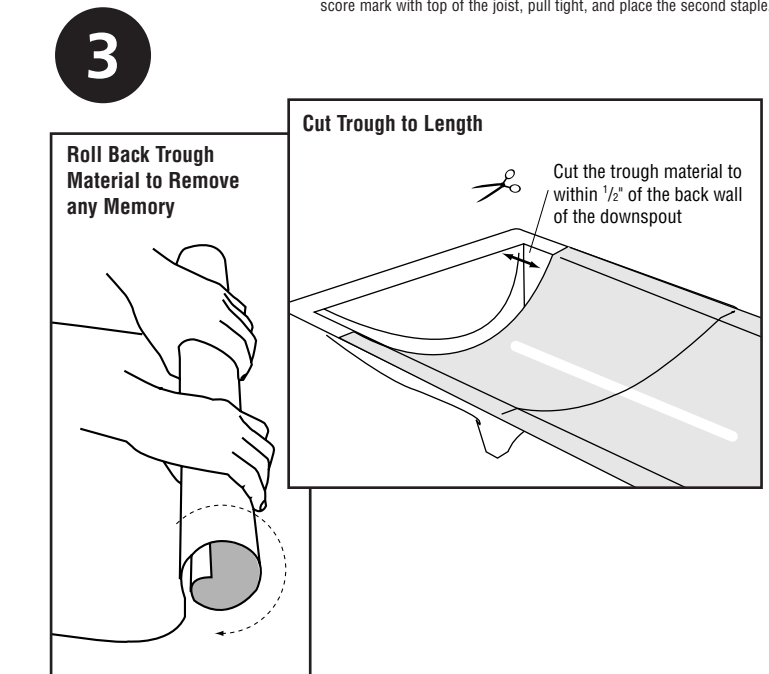
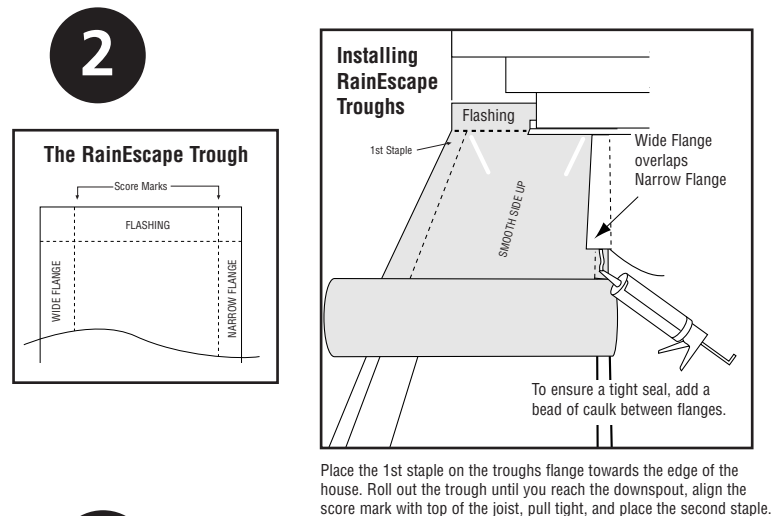
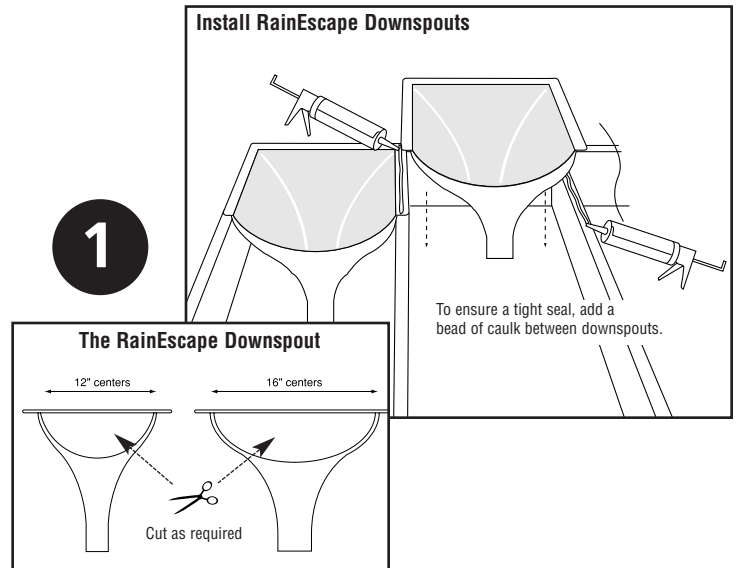
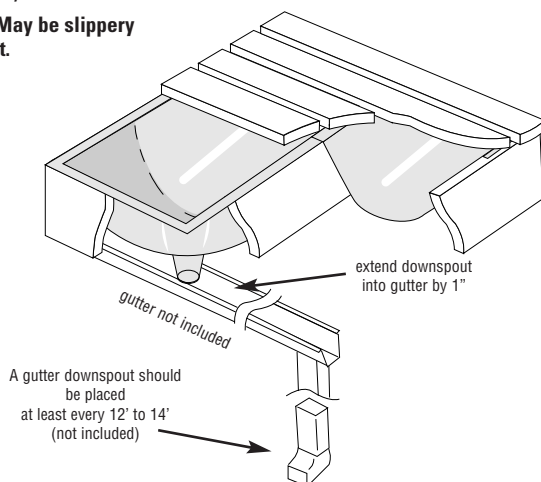
Do's

- Make sure your floor joist are straight and square
- Make sure the score marks line up with the inside top edge of the joist.
- Make sure the trough is wrinkle free and has proper fall to the downspout.
- Cut trough to within 1/2" of the back wall of the downspout..
- Gutters should have outlets every 12' to 14' (Gutters not included).
- Caulk wherever RainEscape materials overlap and on rim joists and ledger boards.
- Caulk whenever flashing flange can not be utilized.
- When caulking always use rubber butyl based caulk.
- When installing electrical fixtures, electronic equipment, wiring, fans etc. first check with your local building department regarding permits and codes.

Don'ts

- Do not staple RainEscape anywhere other than over or into the floor joists, ledgers, rim joist, headers, etc. This may cause leaking.
- Don't stand anywhere other than directly on top of the floor joist, ledger, rim joist, or header as the RainEscape system will not support you.

Caution: May be slippery when wet.



Tool Required:

- Scissors
- Staple gun

RainEscape™
THE DECK DRAINAGE COMPANY

PATENT# 6694686